

# Product Datasheet

## CCM2 Antibody NB100-53812

Unit Size: 0.1 mg

Store at -20C. Avoid freeze-thaw cycles.

[www.novusbio.com](http://www.novusbio.com)



[technical@novusbio.com](mailto:technical@novusbio.com)

### Publications: 1

Protocols, Publications, Related Products, Reviews, Research Tools and Images at:  
[www.novusbio.com/NB100-53812](http://www.novusbio.com/NB100-53812)

Updated 9/9/2025 v.20.1

Earn rewards for product  
reviews and publications.

Submit a publication at [www.novusbio.com/publications](http://www.novusbio.com/publications)

Submit a review at [www.novusbio.com/reviews/destination/NB100-53812](http://www.novusbio.com/reviews/destination/NB100-53812)



**NB100-53812****CCM2 Antibody**

<b>Product Information</b>	
<b>Unit Size</b>	0.1 mg
<b>Concentration</b>	0.5 mg/ml
<b>Storage</b>	Store at -20C. Avoid freeze-thaw cycles.
<b>Clonality</b>	Polyclonal
<b>Preservative</b>	0.02% Sodium Azide
<b>Isotype</b>	IgG
<b>Purity</b>	Immunogen affinity purified
<b>Buffer</b>	Tris saline (20 mM Tris pH 7.3, 150 mM NaCl), 0.5% BSA

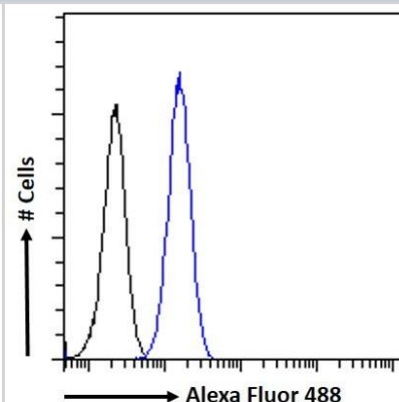
<b>Product Description</b>	
<b>Description</b>	Novus Biologicals Goat CCM2 Antibody (NB100-53812) is a polyclonal antibody validated for use in WB, ELISA, Flow and ICC/IF. Anti-CCM2 Antibody: Cited in 1 publication. All Novus Biologicals antibodies are covered by our 100% guarantee.
<b>Host</b>	Goat
<b>Gene ID</b>	83605
<b>Gene Symbol</b>	CCM2
<b>Species</b>	Human
<b>Specificity/Sensitivity</b>	This antibody is expected to recognize isoform 1 (NP_001025006.1), isoform 2 (NP_113631.1) and isoform 4 (NP_001161407.1).
<b>Immunogen</b>	Peptide with sequence C-KGEKSRDKKAHEK, from the internal region of the protein sequence according to NP_001025006.1; NP_113631.1; NP_001161407.1; NP_001350387.1.

<b>Product Application Details</b>	
<b>Applications</b>	Western Blot, Flow Cytometry, Immunocytochemistry/ Immunofluorescence, Peptide ELISA
<b>Recommended Dilutions</b>	Western Blot 0.3-2 ug/ml, Flow Cytometry 10 ug/ml, Immunocytochemistry/ Immunofluorescence 10 ug/ml, Peptide ELISA Detection limit 1:128000
<b>Application Notes</b>	WB: Approx 45-48kDa band observed in Human Heart lysates and approx.48kDa in Human Cerebral Cortex lysates and in lysates of cell line KNRK (calculated MW of 48.8kDa according to Human NP_113631.1 and 49.8kDa according to Rat NP_001119747.1). Primary incubation 1 hour at room temperature.

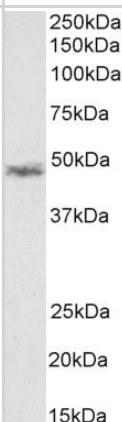


## Images

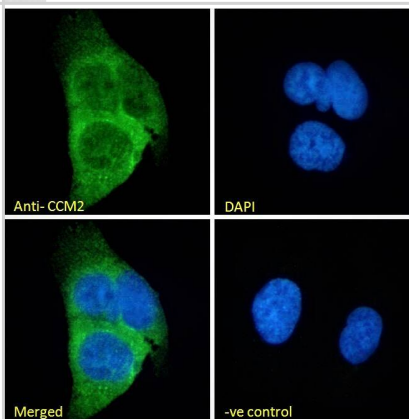
**Flow Cytometry: CCM2 Antibody [NB100-53812]** - Flow cytometric analysis of paraformaldehyde fixed KNRK cells (blue line), permeabilized with 0.5% Triton. Primary incubation 1hr (10ug/ml) followed by Alexa Fluor 488 secondary antibody (1ug/ml). IgG control: Unimmunized goat IgG (black line) followed by Alexa Fluor 488 secondary antibody.



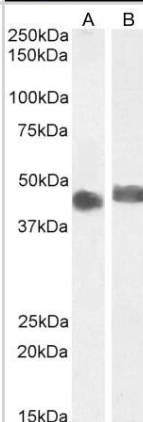
**Western Blot: CCM2 Antibody [NB100-53812]** - (1ug/ml) staining of Rat KNRK cell lysate (35ug protein in RIPA buffer). Detected by chemiluminescence.



**Immunocytochemistry/Immunofluorescence: CCM2 Antibody [NB100-53812]** - Immunofluorescence analysis of paraformaldehyde fixed U2OS cells, permeabilized with 0.15% Triton. Primary incubation 1hr (10ug/ml) followed by Alexa Fluor 488 secondary antibody (2ug/ml), showing cytoplasmic staining. The nuclear stain is DAPI (blue). Negative control: Unimmunized goat IgG (10ug/ml) followed by Alexa Fluor 488 secondary antibody (2ug/ml).



**Western Blot: CCM2 Antibody [NB100-53812]** - (0.5ug/ml) staining of Human Heart (A) and (2ug/ml) Cerebral Cortex (B) lysate (35ug protein in RIPA buffer). Detected by chemiluminescence.



## Publications

Zawistowski JS, Stalheim L, Uhlik MT et al. CCM1 and CCM2 protein interactions in cell signaling: implications for cerebral cavernous malformations pathogenesis. Hum Mol Genet 2005-09-01 [PMID: 16037064]



### **Novus Biologicals USA**

10730 E. Briarwood Avenue  
Centennial, CO 80112  
USA  
Phone: 303.730.1950  
Toll Free: 1.888.506.6887  
Fax: 303.730.1966  
nb-customerservice@bio-techne.com

### **Bio-Techne Canada**

21 Canmotor Ave  
Toronto, ON M8Z 4E6  
Canada  
Phone: 905.827.6400  
Toll Free: 855.668.8722  
Fax: 905.827.6402  
canada.inquires@bio-techne.com

### **Bio-Techne Ltd**

19 Barton Lane  
Abingdon Science Park  
Abingdon, OX14 3NB, United Kingdom  
Phone: (44) (0) 1235 529449  
Free Phone: 0800 37 34 15  
Fax: (44) (0) 1235 533420  
info.EMEA@bio-techne.com

### **General Contact Information**

www.novusbio.com  
Technical Support: nb-technical@bio-techne.com  
Orders: nb-customerservice@bio-techne.com  
General: novus@novusbio.com

### **Products Related to NB100-53812**

NB820-59217	Human Heart Whole Tissue Lysate (Adult Whole Normal)
HAF017	Rabbit anti-Goat IgG Secondary Antibody [HRP (Horseradish Peroxidase)]
HAF109	Donkey anti-Goat IgG Secondary Antibody [HRP (Horseradish Peroxidase)]
NB410-28088-1mg	Goat IgG Isotype Control

### **Limitations**

This product is for research use only and is not approved for use in humans or in clinical diagnosis. Primary Antibodies are guaranteed for 1 year from date of receipt.

For more information on our 100% guarantee, please visit [www.novusbio.com/guarantee](http://www.novusbio.com/guarantee)

Earn gift cards/discounts by submitting a review: [www.novusbio.com/reviews/submit/NB100-53812](http://www.novusbio.com/reviews/submit/NB100-53812)

Earn gift cards/discounts by submitting a publication using this product:  
[www.novusbio.com/publications](http://www.novusbio.com/publications)



