

Product Datasheet

MCAF1 Antibody - BSA Free

NB100-438

Unit Size: 100 ul

Store at 4C. Do not freeze.

www.novusbio.com



technical@novusbio.com

Publications: 1

Protocols, Publications, Related Products, Reviews, Research Tools and Images at:
www.novusbio.com/NB100-438

Updated 9/9/2025 v.20.1

Earn rewards for product
reviews and publications.

Submit a publication at www.novusbio.com/publications

Submit a review at www.novusbio.com/reviews/destination/NB100-438



NB100-438

MCAF1 Antibody - BSA Free

Product Information

Unit Size	100 ul
Concentration	1.0 mg/ml
Storage	Store at 4C. Do not freeze.
Clonality	Polyclonal
Preservative	0.09% Sodium Azide
Isotype	IgG
Purity	Immunogen affinity purified
Buffer	Tris-Citrate/Phosphate (pH 7.0 - 8.0)

Product Description

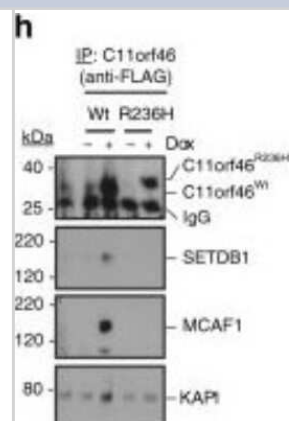
Description	Novus Biologicals Rabbit MCAF1 Antibody - BSA Free (NB100-438) is a polyclonal antibody validated for use in IHC and WB. Anti-MCAF1 Antibody: Cited in 1 publication. All Novus Biologicals antibodies are covered by our 100% guarantee.
Host	Rabbit
Gene ID	55729
Gene Symbol	ATF7IP
Species	Human
Immunogen	A synthetic peptide that maps to a region between residues 25 and 100 of human MBD1-containing Chromatin Associated Factor using the numbering given in entry AAQ92978.1 (GeneID 55729)

Product Application Details

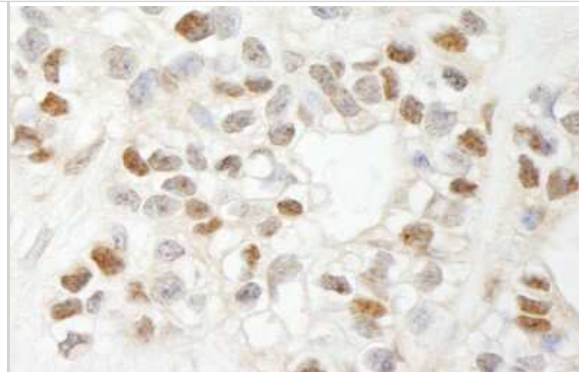
Applications	Western Blot, Immunohistochemistry-Paraffin, Immunoblotting, Immunohistochemistry, Knockdown Validated
Recommended Dilutions	Western Blot 1:5000-1:20000, Immunohistochemistry 1:10-1:500, Immunohistochemistry-Paraffin 1:10-1:500, Immunoblotting, Knockdown Validated
Application Notes	Epitope retrieval with citrate buffer pH6.0 is recommended for FFPE tissue sections. Use in immunoblotting reported in scientific literature (PMID:31511512).

Images

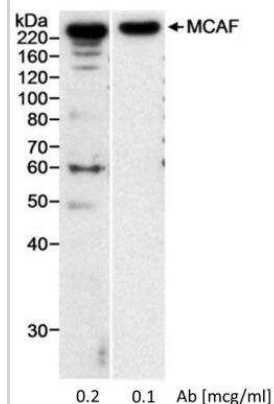
Western Blot: MCAF1 Antibody [NB100-438] - C11orf46 binds to the SETDB1 complex. Co-immunoprecipitation experiments using protein lysates from HEK293 cells overexpressing FLAG-tagged C11orf46, C11orf46delta, or C11orf46R236H showed that absence of CRD domain and R236H mutation is associated with weakened or non-detectable C11orf46-SETDB1 binding and partial loss of binding to other components. R236H mutation does not fully disrupt C11orf46-KAP1 binding. Image collected and cropped by CiteAb from the following publication (<https://www.nature.com/articles/s41467-019-12013-y>), licensed under a CC-BY license.



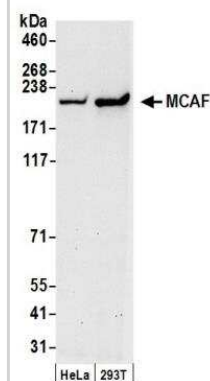
Immunohistochemistry: MCAF1 Antibody [NB100-438] - Sample: FFPE section of human breast carcinoma. Antibody: Affinity purified rabbit anti-MCAF used at a dilution of 1:1,000 (1ug/ml). Detection: DAB



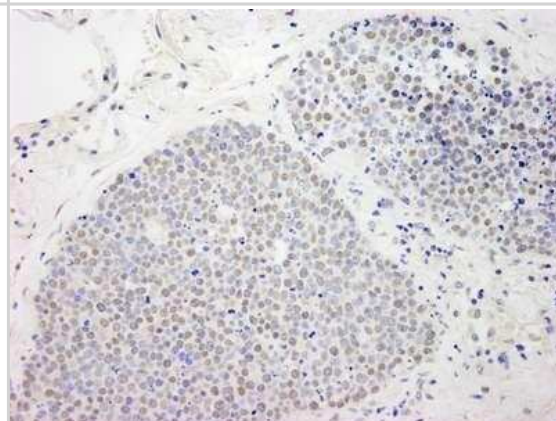
Western Blot: MCAF1 Antibody [NB100-438] - Nuclear extract (20 ug) from HeLa cells. Antibody used at 0.2 and 0.1 ug/ml.



Western Blot: MCAF1 Antibody [NB100-438] - Detection of Human MCAF by Western Blot. Samples: Whole cell lysate (50 ug) from HeLa and 293T cells prepared using NETN lysis buffer. Antibody: Affinity purified rabbit anti-MCAF antibody NB100-438 used for WB at 0.05 ug/ml. Detection: Chemiluminescence with an exposure time of 30 seconds.



Immunohistochemistry-Paraffin: MCAF1 Antibody [NB100-438] - FFPE section of human small cell lung cancer. NB100-438 used at a dilution of 1:250. Detection: DAB staining using Immunohistochemistry Accessory Kit



Publications

Peter CJ, Saito A, Hasegawa Y et al. In vivo epigenetic editing of Sema6a promoter reverses transcallosal dysconnectivity caused by C11orf46/Ar14ep risk gene Nat Commun 2019-09-11 [PMID: 31511512] (KD, IB, Human)



Novus Biologicals USA

10730 E. Briarwood Avenue
Centennial, CO 80112
USA
Phone: 303.730.1950
Toll Free: 1.888.506.6887
Fax: 303.730.1966
nb-customerservice@bio-techne.com

Bio-Techne Canada

21 Canmotor Ave
Toronto, ON M8Z 4E6
Canada
Phone: 905.827.6400
Toll Free: 855.668.8722
Fax: 905.827.6402
canada.inquires@bio-techne.com

Bio-Techne Ltd

19 Barton Lane
Abingdon Science Park
Abingdon, OX14 3NB, United Kingdom
Phone: (44) (0) 1235 529449
Free Phone: 0800 37 34 15
Fax: (44) (0) 1235 533420
info.EMEA@bio-techne.com

General Contact Information

www.novusbio.com
Technical Support: nb-technical@bio-techne.com
Orders: nb-customerservice@bio-techne.com
General: novus@novusbio.com

Products Related to NB100-438

NB800-PC9	HeLa Nuclear Cell Lysate
HAF008	Goat anti-Rabbit IgG Secondary Antibody [HRP]
NB7160	Goat anti-Rabbit IgG (H+L) Secondary Antibody [HRP]
NBP2-24891	Rabbit IgG Isotype Control

Limitations

This product is for research use only and is not approved for use in humans or in clinical diagnosis. Primary Antibodies are guaranteed for 1 year from date of receipt.

For more information on our 100% guarantee, please visit www.novusbio.com/guarantee

Earn gift cards/discounts by submitting a review: www.novusbio.com/reviews/submit/NB100-438

Earn gift cards/discounts by submitting a publication using this product:
www.novusbio.com/publications

