

Product Datasheet

FKBP15 Antibody - BSA Free

NB100-424

Unit Size: 100 ul

Store at 4C. Do not freeze.

www.novusbio.com



technical@novusbio.com

Publications: 1

Protocols, Publications, Related Products, Reviews, Research Tools and Images at:
www.novusbio.com/NB100-424

Updated 2/21/2025 v.20.1

Earn rewards for product
reviews and publications.

Submit a publication at www.novusbio.com/publications

Submit a review at www.novusbio.com/reviews/destination/NB100-424



NB100-424

FKBP15 Antibody - BSA Free

Product Information	
Unit Size	100 ul
Concentration	1.0 mg/ml
Storage	Store at 4C. Do not freeze.
Clonality	Polyclonal
Preservative	0.09% Sodium Azide
Isotype	IgG
Purity	Immunogen affinity purified
Buffer	Tris-Citrate/Phosphate (pH 7.0 - 8.0)

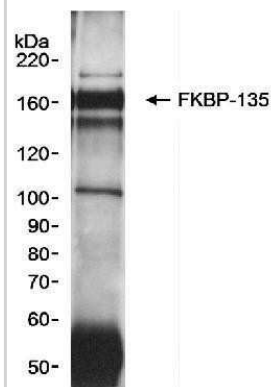
Product Description	
Host	Rabbit
Gene ID	23307
Gene Symbol	FKBP15
Species	Human
Immunogen	A synthetic peptide mapping to a region between residues 1175 and 1234 (C-terminus) of human FK506-binding protein 135 using the numbering given in TrEMBL entry Q9Y4D0 (GeneID 23307).

Product Application Details	
Applications	Immunoprecipitation, Western Blot (Negative)
Recommended Dilutions	Immunoprecipitation 1-4 ug/mg of lysate, Western Blot (Negative)
Application Notes	Immunoprecipitation. Western Blot is not recommended with this antibody. NB 100-422 and NB 100-423 are recommended for Western Blot. *The investigator should determine the optimal working dilution for a specific application.

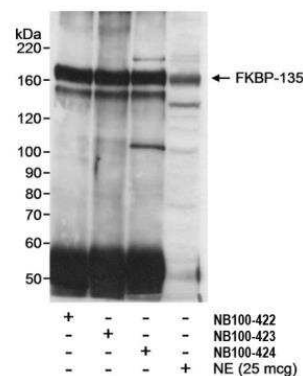


Images

Immunoprecipitation: FKBP15 Antibody [NB100-424] - Detection of human FKBP-135 in immunoprecipitation, using NB100-424. Samples: HeLa nuclear extracts. Exposure time of 10 minutes.



Immunoprecipitation: FKBP15 Antibody [NB100-424] - Detection of human FKBP-135 by western blot and immunoprecipitation. Samples: Nuclear extract (NE; 1 mg for IP; 25 ug for WB) from HeLa cells. Antibodies: Affinity purified rabbit anti-FKBP-135 antibodies BL1008 (NB100-422), BL1009 (NB100-423) and BL1010 (NB100-424) used at 2 ug/mg extract for IP. FKBP-135 in NE and immunoprecipitated FKBP-135 were detected using BL1008 (NB100-422) at 0.2 ug/ml. Detection: Chemiluminescence with an exposure time of 10 minutes.



Publications

Kauppinen JM, Kosma VM, Soini Y et al. ST14 gene variant and decreased matriptase protein expression predict poor breast cancer survival. Cancer Epidemiol Biomarkers Prev 2010-09-01 [PMID: 20716618]



Novus Biologicals USA

10730 E. Briarwood Avenue
Centennial, CO 80112
USA
Phone: 303.730.1950
Toll Free: 1.888.506.6887
Fax: 303.730.1966
nb-customerservice@bio-techne.com

Bio-Techne Canada

21 Canmotor Ave
Toronto, ON M8Z 4E6
Canada
Phone: 905.827.6400
Toll Free: 855.668.8722
Fax: 905.827.6402
canada.inquires@bio-techne.com

Bio-Techne Ltd

19 Barton Lane
Abingdon Science Park
Abingdon, OX14 3NB, United Kingdom
Phone: (44) (0) 1235 529449
Free Phone: 0800 37 34 15
Fax: (44) (0) 1235 533420
info.EMEA@bio-techne.com

General Contact Information

www.novusbio.com
Technical Support: nb-technical@bio-techne.com
Orders: nb-customerservice@bio-techne.com
General: novus@novusbio.com

Products Related to NB100-424

HAF008	Goat anti-Rabbit IgG Secondary Antibody [HRP]
NB7160	Goat anti-Rabbit IgG (H+L) Secondary Antibody [HRP]
NBP2-24891	Rabbit IgG Isotype Control
NBP1-82972PEP	FKBP15 Recombinant Protein Antigen

Limitations

This product is for research use only and is not approved for use in humans or in clinical diagnosis. Primary Antibodies are guaranteed for 1 year from date of receipt.

For more information on our 100% guarantee, please visit www.novusbio.com/guarantee

Earn gift cards/discounts by submitting a review: www.novusbio.com/reviews/submit/NB100-424

Earn gift cards/discounts by submitting a publication using this product:
www.novusbio.com/publications

