

# Product Datasheet

## PTEN2/TPTE Antibody NB100-41395

Unit Size: 0.1 mg

Store at -20C. Avoid freeze-thaw cycles.

[www.novusbio.com](http://www.novusbio.com)



[technical@novusbio.com](mailto:technical@novusbio.com)

### Publications: 1

Protocols, Publications, Related Products, Reviews, Research Tools and Images at:  
[www.novusbio.com/NB100-41395](http://www.novusbio.com/NB100-41395)

Updated 9/9/2025 v.20.1

Earn rewards for product  
reviews and publications.

Submit a publication at [www.novusbio.com/publications](http://www.novusbio.com/publications)

Submit a review at [www.novusbio.com/reviews/destination/NB100-41395](http://www.novusbio.com/reviews/destination/NB100-41395)



**NB100-41395**

## PTEN2/TPTE Antibody

| Product Information |  |
|---------------------|--|
| Unit Size           | 0.1 mg   |
| Concentration       | 0.5 mg/ml  |
| Storage             | Store at -20C. Avoid freeze-thaw cycles.               |
| Clonality           | Polyclonal   |
| Preservative        | 0.02% Sodium Azide                                     |
| Isotype             | IgG  |
| Purity              | Immunogen affinity purified                            |
| Buffer              | Tris saline (20 mM Tris pH 7.3, 150 mM NaCl), 0.5% BSA |

| Product Description     |   |
|-------------------------|---|
| Description             | Novus Biologicals Goat PTEN2/TPTE Antibody (NB100-41395) is a polyclonal antibody validated for use in IHC, WB and ELISA. Anti-PTEN2/TPTE Antibody: Cited in 1 publication. All Novus Biologicals antibodies are covered by our 100% guarantee. |
| Host                    | Goat  |
| Gene ID                 | 7179  |
| Gene Symbol             | TPTE  |
| Species                 | Human   |
| Specificity/Sensitivity | This antibody is expected to recognise all reported isoforms (NP_954870.2, NP_954868.1 and NP_954869.1). It may cross-react with the almost identical TPTE2 (GeneID 93492; NP_570141.2, NP_954864.1, NP_954863.1).                              |
| Immunogen               | Peptide with sequence C-ERRTDKTHSEKFQ corresponding to internal region according to NP_954870.2, NP_954868.1, NP_954869.1.  |

| Product Application Details |   |
|-----------------------------|---|
| Applications                | Western Blot, Immunohistochemistry-Paraffin, Immunohistochemistry, Peptide ELISA  |
| Recommended Dilutions       | Western Blot 1 - 3 ug/ml, Immunohistochemistry, Immunohistochemistry-Paraffin 5 ug/ml, Peptide ELISA Detection limit 1:16000  |
| Application Notes           | WB: Approx. 50-55 kDa band observed in human testis lysates (calculated MW of 60.2 kDa band according to NP_954869.1).<br>IHC: Paraffin embedded Human Adrenal Gland. |

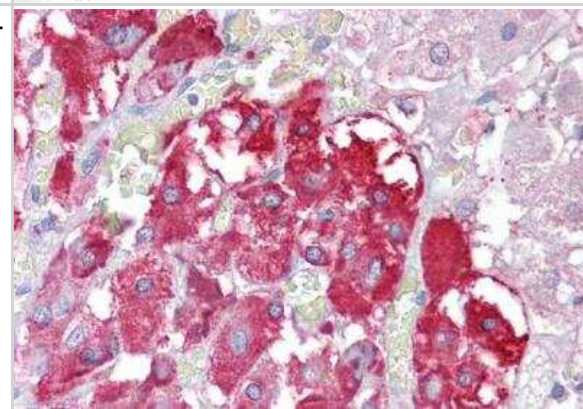


## Images

Western Blot: PTEN2/TPTE Antibody [NB100-41395] - (1ug/ml) staining of Human Testis lysate (35ug protein in RIPA buffer). Primary incubation was 1 hour. Detected by chemiluminescence.

250kDa  
150kDa  
100kDa  
75kDa  
50kDa  
37kDa  
25kDa  
20kDa  
15kDa  
10kDa

Immunohistochemistry-Paraffin: PTEN2/TPTE Antibody [NB100-41395] - staining of paraffin embedded Human Adrenal Gland. Steamed antigen retrieval with citrate buffer pH 6, AP-staining.



## Publications

Tapparel C, Reymond A, Girardet C et al. The TPTE gene family: cellular expression, subcellular localization and alternative splicing. *Gene* 2003-12-24 [PMID: 14659893]



### Novus Biologicals USA

10730 E. Briarwood Avenue  
Centennial, CO 80112  
USA

Phone: 303.730.1950  
Toll Free: 1.888.506.6887  
Fax: 303.730.1966

[nb-customerservice@bio-techne.com](mailto:nb-customerservice@bio-techne.com)

### Bio-Techne Canada

21 Canmotor Ave  
Toronto, ON M8Z 4E6  
Canada

Phone: 905.827.6400  
Toll Free: 855.668.8722  
Fax: 905.827.6402

[canada.inquires@bio-techne.com](mailto:canada.inquires@bio-techne.com)



## Bio-Techne Ltd

19 Barton Lane  
Abingdon Science Park  
Abingdon, OX14 3NB, United Kingdom  
Phone: (44) (0) 1235 529449  
Free Phone: 0800 37 34 15  
Fax: (44) (0) 1235 533420  
info.EMEA@bio-techne.com

## General Contact Information

www.novusbio.com  
Technical Support: nb-technical@bio-techne.com  
Orders: nb-customerservice@bio-techne.com  
General: novus@novusbio.com

## Products Related to NB100-41395

---

|                 |  |
|-----------------|--|
| NBL1-17235      | PTEN2/TPTE Overexpression Lysate                                       |
| NB100-41395PEP  | PTEN2/TPTE Peptide   |
| NBP2-33376H     | Blue Marker Antibody (6F4-F6) [HRP]                                    |
| HAF017          | Rabbit anti-Goat IgG Secondary Antibody [HRP (Horseradish Peroxidase)] |
| HAF109          | Donkey anti-Goat IgG Secondary Antibody [HRP (Horseradish Peroxidase)] |
| NB410-28088-1mg | Goat IgG Isotype Control   |

---

### Limitations

This product is for research use only and is not approved for use in humans or in clinical diagnosis. Primary Antibodies are guaranteed for 1 year from date of receipt.

For more information on our 100% guarantee, please visit [www.novusbio.com/guarantee](http://www.novusbio.com/guarantee)

Earn gift cards/discounts by submitting a review: [www.novusbio.com/reviews/submit/NB100-41395](http://www.novusbio.com/reviews/submit/NB100-41395)

Earn gift cards/discounts by submitting a publication using this product:  
[www.novusbio.com/publications](http://www.novusbio.com/publications)

