

# Product Datasheet

## LEF1 Antibody NB100-41374

Unit Size: 0.1 mg

Store at -20C. Avoid freeze-thaw cycles.

[www.novusbio.com](http://www.novusbio.com)



[technical@novusbio.com](mailto:technical@novusbio.com)

### Publications: 2

Protocols, Publications, Related Products, Reviews, Research Tools and Images at:  
[www.novusbio.com/NB100-41374](http://www.novusbio.com/NB100-41374)

Updated 10/23/2024 v.20.1

Earn rewards for product  
reviews and publications.

Submit a publication at [www.novusbio.com/publications](http://www.novusbio.com/publications)

Submit a review at [www.novusbio.com/reviews/destination/NB100-41374](http://www.novusbio.com/reviews/destination/NB100-41374)



**NB100-41374**

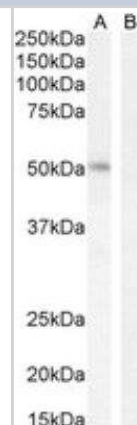
## LEF1 Antibody

Product Information	
Unit Size	0.1 mg
Concentration	0.5 mg/ml
Storage	Store at -20C. Avoid freeze-thaw cycles.
Clonality	Polyclonal
Preservative	0.02% Sodium Azide
Isotype	IgG
Purity	Immunogen affinity purified
Buffer	Tris saline (20 mM Tris pH 7.3, 150 mM NaCl), 0.5% BSA
Product Description	
Host	Goat
Gene ID	51176
Gene Symbol	LEF1
Species	Human
Immunogen	Peptide with sequence C-QHEQRKEQEPKRPH corresponding to internal region according to NP_057353.1.
Product Application Details	
Applications	Western Blot, Flow Cytometry, Immunocytochemistry/ Immunofluorescence, Peptide ELISA
Recommended Dilutions	Western Blot 1 - 3 ug/mL, Flow Cytometry 10 ug/mL, Immunocytochemistry/ Immunofluorescence 10 ug/mL, Peptide ELISA Detection limit 1:32000
Application Notes	Approx 50-55 kDa band observed in nuclear lysates of cell line K562 (calculated MW of 44.2 kDa according to NP_057353.1). This molecular weight is routinely observed by other sources and was successfully blocked by incubation with the immunizing peptide.

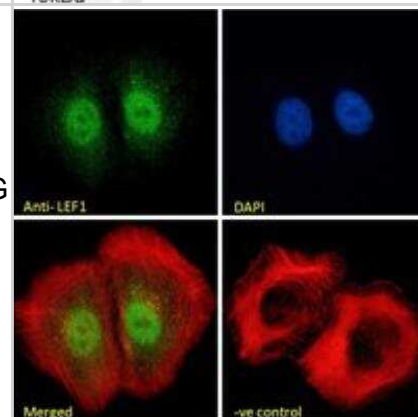


## Images

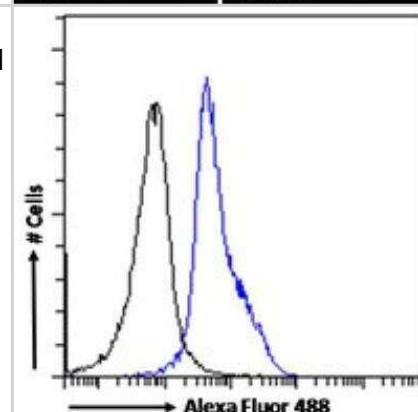
Western Blot: LEF1 Antibody [NB100-41374] - Staining of K562 nuclear cell lysate (A) + peptide (B). Antibody at 2 ug/mL. 35 ug protein in RIPA buffer. Detected by chemiluminescence.



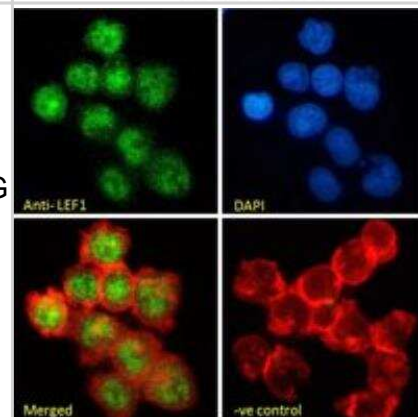
Immunocytochemistry/Immunofluorescence: LEF1 Antibody [NB100-41374] - Immunofluorescence analysis of paraformaldehyde fixed U2OS cells, permeabilized with 0.15% Triton. Primary incubation 1hr (10ug/ml) followed by Alexa Fluor 488 secondary antibody (2ug/ml), showing nuclear staining. Actin filaments were stained with phalloidin (red) and the nuclear stain is DAPI (blue). Negative control: Unimmunized goat IgG (10ug/ml) followed by Alexa Fluor 488 secondary antibody (2ug/ml).



Flow Cytometry: LEF1 Antibody [NB100-41374] - Flow cytometric analysis of paraformaldehyde fixed Jurkat cells (blue line), permeabilized with 0.5% Triton. Primary incubation 1hr (10ug/ml) followed by Alexa Fluor 488 secondary antibody (1ug/ml). IgG control: Unimmunized goat IgG (10ug/ml) followed by Alexa Fluor 488 secondary antibody.



Immunocytochemistry/Immunofluorescence: LEF1 Antibody [NB100-41374] - Immunofluorescence analysis of paraformaldehyde fixed Jurkat cells, permeabilized with 0.15% Triton. Primary incubation 1hr (10ug/ml) followed by Alexa Fluor 488 secondary antibody (2ug/ml), showing nuclear staining. Actin filaments were stained with phalloidin (red) and the nuclear stain is DAPI (blue). Negative control: Unimmunized goat IgG (10ug/ml) followed by Alexa Fluor 488 secondary antibody (2ug/ml).



## Publications

Radtke F, Clevers H. Self-renewal and cancer of the gut: two sides of a coin. Science 2005-03-25 [PMID: 15790842]

Yasumoto K, Takeda K, Saito H et al. Microphthalmia-associated transcription factor interacts with LEF-1, a mediator of Wnt signaling. EMBO J 2002-06-01 [PMID: 12032083]





### **Novus Biologicals USA**

10730 E. Briarwood Avenue  
Centennial, CO 80112  
USA  
Phone: 303.730.1950  
Toll Free: 1.888.506.6887  
Fax: 303.730.1966  
nb-customerservice@bio-techne.com

### **Bio-Techne Canada**

21 Canmotor Ave  
Toronto, ON M8Z 4E6  
Canada  
Phone: 905.827.6400  
Toll Free: 855.668.8722  
Fax: 905.827.6402  
canada.inquires@bio-techne.com

### **Bio-Techne Ltd**

19 Barton Lane  
Abingdon Science Park  
Abingdon, OX14 3NB, United Kingdom  
Phone: (44) (0) 1235 529449  
Free Phone: 0800 37 34 15  
Fax: (44) (0) 1235 533420  
info.EMEA@bio-techne.com

### **General Contact Information**

www.novusbio.com  
Technical Support: nb-technical@bio-techne.com  
Orders: nb-customerservice@bio-techne.com  
General: novus@novusbio.com

### **Products Related to NB100-41374**

NBL1-12484	LEF1 Overexpression Lysate
HAF017	Rabbit anti-Goat IgG Secondary Antibody [HRP (Horseradish Peroxidase)]
HAF109	Donkey anti-Goat IgG Secondary Antibody [HRP (Horseradish Peroxidase)]
NB410-28088-1mg	Goat IgG Isotype Control

### **Limitations**

This product is for research use only and is not approved for use in humans or in clinical diagnosis. Primary Antibodies are guaranteed for 1 year from date of receipt.

For more information on our 100% guarantee, please visit [www.novusbio.com/guarantee](http://www.novusbio.com/guarantee)

Earn gift cards/discounts by submitting a review: [www.novusbio.com/reviews/submit/NB100-41374](http://www.novusbio.com/reviews/submit/NB100-41374)

Earn gift cards/discounts by submitting a publication using this product:  
[www.novusbio.com/publications](http://www.novusbio.com/publications)



