

# Product Datasheet

## NLRP3/NALP3 Antibody NB100-41104

Unit Size: 0.1 mg

Store at -20C. Avoid freeze-thaw cycles.

[www.novusbio.com](http://www.novusbio.com)



[technical@novusbio.com](mailto:technical@novusbio.com)

### Publications: 3

Protocols, Publications, Related Products, Reviews, Research Tools and Images at:  
[www.novusbio.com/NB100-41104](http://www.novusbio.com/NB100-41104)

Updated 9/9/2025 v.20.1

Earn rewards for product  
reviews and publications.

Submit a publication at [www.novusbio.com/publications](http://www.novusbio.com/publications)

Submit a review at [www.novusbio.com/reviews/destination/NB100-41104](http://www.novusbio.com/reviews/destination/NB100-41104)



**NB100-41104****NLRP3/NALP3 Antibody**

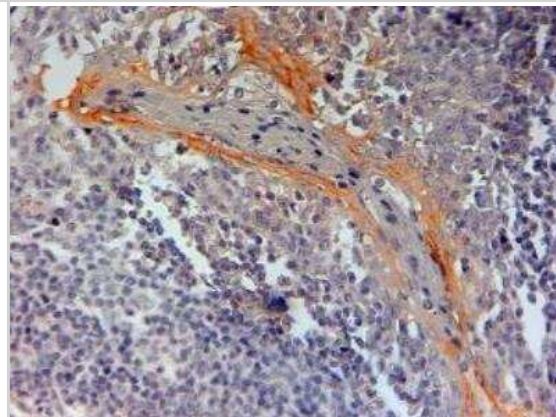
<b>Product Information</b>	
<b>Unit Size</b>	0.1 mg
<b>Concentration</b>	0.5 mg/ml
<b>Storage</b>	Store at -20C. Avoid freeze-thaw cycles.
<b>Clonality</b>	Polyclonal
<b>Preservative</b>	0.02% Sodium Azide
<b>Isotype</b>	IgG
<b>Purity</b>	Immunogen affinity purified
<b>Buffer</b>	Tris saline (20 mM Tris pH 7.3, 150 mM NaCl), 0.5% BSA
<b>Target Molecular Weight</b>	106 kDa

<b>Product Description</b>	
<b>Description</b>	Novus Biologicals Goat NLRP3/NALP3 Antibody (NB100-41104) is a polyclonal antibody validated for use in IHC and ELISA. Anti-NLRP3/NALP3 Antibody: Cited in 3 publications. All Novus Biologicals antibodies are covered by our 100% guarantee.
<b>Host</b>	Goat
<b>Gene ID</b>	114548
<b>Gene Symbol</b>	NLRP3
<b>Species</b>	Human
<b>Specificity/Sensitivity</b>	This antibody is expected to recognise all five reported isoforms (NP_004886.3; NP_899632.1; NP_001230062.1; NP_001120933.1; NP_001120934.1). Reported variants represent identical protein (NP_004886.3 and NP_001073289.1).
<b>Immunogen</b>	Peptide with sequence C-DLYEKAKRDEPK corresponding to internal region of NLRP3/NALP3 Antibody according to NP_004886.3, NP_899632.1, NP_001230062.1, NP_001120933.1, NP_001120934.1.

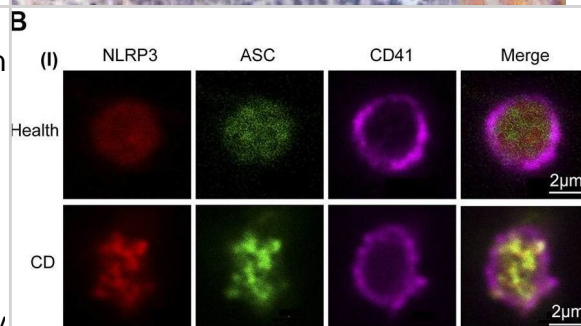
<b>Product Application Details</b>	
<b>Applications</b>	Immunohistochemistry-Paraffin, Immunohistochemistry, Peptide ELISA
<b>Recommended Dilutions</b>	Immunohistochemistry 2 - 4 ug/ml, Immunohistochemistry-Paraffin 2 - 4 ug/ml, Peptide ELISA Detection limit 1:64000
<b>Application Notes</b>	WB: Preliminary experiments gave an approx. 70 kDa band in human lymph node and tonsil lysates after 0.3 ug/ml antibody staining. Please note that currently we cannot find an explanation in the literature for the band we observe given the calculated size of 118 kDa band according to NP_004886.3 and 106 kDa band according to NP_899632.1. The 70 kDa band was successfully blocked by incubation with the immunizing peptide. IHC-P: Human tonsil shows focal and interstitial staining of the inflammatory elements close to the epithelia of the tonsil crypts.

## Images

Immunohistochemistry-Paraffin: NLRP3/NALP3 Antibody [NB100-41104]  
- Human Tonsil shows focal and interstitial staining of the inflammatory elements close to the epithelia of the tonsil crypts.



Activation of NLRP3 inflammasome in platelets from patients with active Crohn's disease (CD). (A) Co-immunoprecipitation of ASC with NLRP3 in platelets from the healthy group and patients with active CD (i). Quantification of the interaction between ASC and NLRP3 in platelets was below (n = 3), (ii). (B) Immunofluorescence staining showed colocalization of ASC (green) and NLRP3 (red) in platelets from patients with active CD (i). The experiment was repeated three times. Intensity traces were plotted below (ii). Scale bars were 20  $\mu\text{m}$ . Health, the healthy group; CD, the patients with active Crohn's disease. Data are presented as mean  $\pm$  SD, \*\*\* $p < 0.001$ . Image collected and cropped by CiteAb from the following open publication (<https://pubmed.ncbi.nlm.nih.gov/34262463>), licensed under a CC-BY license. Not internally tested by Novus Biologicals.



## Publications

Zhang G, Chen H, Guo Y et al. Activation of Platelet NLRP3 Inflammasome in Crohn's Disease *Frontiers in Pharmacology* 2021-06-28 [PMID: 34262463]

Wei J, Chen Q, James JL et al. IL-1 beta but not the NALP3 inflammasome is an important determinant of endothelial cell responses to necrotic/dangerous trophoblastic debris. *Placenta* 2015-12-01 [PMID: 26515928]

Kanneganti TD, Ozoren N, Body-Malapel M et al. Bacterial RNA and small antiviral compounds activate caspase-1 through cryopyrin/Nalp3. *Nature* 2006-03-09 [PMID: 16407888]



### **Novus Biologicals USA**

10730 E. Briarwood Avenue  
Centennial, CO 80112  
USA  
Phone: 303.730.1950  
Toll Free: 1.888.506.6887  
Fax: 303.730.1966  
nb-customerservice@bio-techne.com

### **Bio-Techne Canada**

21 Canmotor Ave  
Toronto, ON M8Z 4E6  
Canada  
Phone: 905.827.6400  
Toll Free: 855.668.8722  
Fax: 905.827.6402  
canada.inquires@bio-techne.com

### **Bio-Techne Ltd**

19 Barton Lane  
Abingdon Science Park  
Abingdon, OX14 3NB, United Kingdom  
Phone: (44) (0) 1235 529449  
Free Phone: 0800 37 34 15  
Fax: (44) (0) 1235 533420  
info.EMEA@bio-techne.com

### **General Contact Information**

www.novusbio.com  
Technical Support: nb-technical@bio-techne.com  
Orders: nb-customerservice@bio-techne.com  
General: novus@novusbio.com

### **Products Related to NB100-41104**

---

NBL1-13675	NLRP3/NALP3 Overexpression Lysate
HAF017	Rabbit anti-Goat IgG Secondary Antibody [HRP (Horseradish Peroxidase)]
HAF109	Donkey anti-Goat IgG Secondary Antibody [HRP (Horseradish Peroxidase)]
NB410-28088-1mg	Goat IgG Isotype Control

---

### **Limitations**

This product is for research use only and is not approved for use in humans or in clinical diagnosis. Primary Antibodies are guaranteed for 1 year from date of receipt.

For more information on our 100% guarantee, please visit [www.novusbio.com/guarantee](http://www.novusbio.com/guarantee)

Earn gift cards/discounts by submitting a review: [www.novusbio.com/reviews/submit/NB100-41104](http://www.novusbio.com/reviews/submit/NB100-41104)

Earn gift cards/discounts by submitting a publication using this product:  
[www.novusbio.com/publications](http://www.novusbio.com/publications)



