

# Product Datasheet

## DOT1L Antibody - BSA Free NB100-40846

Unit Size: 100 ul

Store at 4C. Do not freeze.

[www.novusbio.com](http://www.novusbio.com)



[technical@novusbio.com](mailto:technical@novusbio.com)

### Publications: 1

Protocols, Publications, Related Products, Reviews, Research Tools and Images at:  
[www.novusbio.com/NB100-40846](http://www.novusbio.com/NB100-40846)

Updated 2/21/2025 v.20.1

Earn rewards for product  
reviews and publications.

Submit a publication at [www.novusbio.com/publications](http://www.novusbio.com/publications)

Submit a review at [www.novusbio.com/reviews/destination/NB100-40846](http://www.novusbio.com/reviews/destination/NB100-40846)



**NB100-40846**

DOT1L Antibody - BSA Free

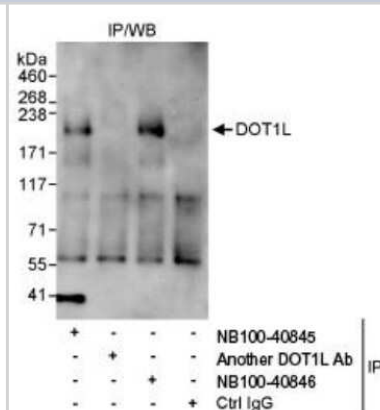
Product Information	
Unit Size	100 ul
Concentration	1.0 mg/ml
Storage	Store at 4C. Do not freeze.
Clonality	Polyclonal
Preservative	0.09% Sodium Azide
Isotype	IgG
Purity	Immunogen affinity purified
Buffer	Tris-Citrate/Phosphate (pH 7.0 - 8.0)

Product Description	
Host	Rabbit
Gene ID	84444
Gene Symbol	DOT1L
Species	Human
Immunogen	The immunogen recognized by this antibody maps to a region between residue 1485 and the C-terminus (residue 1537) of human DOT1-Like using the numbering given in entry NP_115871.1 (GeneID 84444).

Product Application Details	
Applications	Immunoprecipitation
Recommended Dilutions	Immunoprecipitation 2-5 ug/mg

**Images**

Immunoprecipitation: DOT1L Antibody [NB100-40846] - Detection of Human DOT1L by Western Blot of Immunoprecipitates. Samples: Whole cell lysate (1 mg for IP, 20% of IP loaded) from HeLa cells. Antibodies: Affinity purified rabbit anti-DOT1L antibody NB100-40846 used for IP at 3 mcg/mg lysate. DOT1L was also immunoprecipitated by rabbit anti-DOT1L antibody NB100-40845, which recognizes an upstream epitope. Detection: Chemiluminescence with an exposure time 10 seconds.

**Publications**

Vernimmen D, Lynch MD, De Gobbi M et al. Polycomb eviction as a new distant enhancer function. Genes Dev 2011-08-01 [PMID: 21828268]



### **Novus Biologicals USA**

10730 E. Briarwood Avenue  
Centennial, CO 80112  
USA  
Phone: 303.730.1950  
Toll Free: 1.888.506.6887  
Fax: 303.730.1966  
nb-customerservice@bio-techne.com

### **Bio-Techne Canada**

21 Canmotor Ave  
Toronto, ON M8Z 4E6  
Canada  
Phone: 905.827.6400  
Toll Free: 855.668.8722  
Fax: 905.827.6402  
canada.inquires@bio-techne.com

### **Bio-Techne Ltd**

19 Barton Lane  
Abingdon Science Park  
Abingdon, OX14 3NB, United Kingdom  
Phone: (44) (0) 1235 529449  
Free Phone: 0800 37 34 15  
Fax: (44) (0) 1235 533420  
info.EMEA@bio-techne.com

### **General Contact Information**

www.novusbio.com  
Technical Support: nb-technical@bio-techne.com  
Orders: nb-customerservice@bio-techne.com  
General: novus@novusbio.com

### **Products Related to NB100-40846**

---

NBL1-09984	DOT1L Overexpression Lysate
HAF008	Goat anti-Rabbit IgG Secondary Antibody [HRP]
NB7160	Goat anti-Rabbit IgG (H+L) Secondary Antibody [HRP]
NBP2-24891	Rabbit IgG Isotype Control

---

### **Limitations**

This product is for research use only and is not approved for use in humans or in clinical diagnosis. Primary Antibodies are guaranteed for 1 year from date of receipt.

For more information on our 100% guarantee, please visit [www.novusbio.com/guarantee](http://www.novusbio.com/guarantee)

Earn gift cards/discounts by submitting a review: [www.novusbio.com/reviews/submit/NB100-40846](http://www.novusbio.com/reviews/submit/NB100-40846)

Earn gift cards/discounts by submitting a publication using this product:  
[www.novusbio.com/publications](http://www.novusbio.com/publications)

