

Product Datasheet

SLC31A1/CTR1 Antibody [DyLight 650] NB100-402C

Unit Size: 0.1 ml

Store at 4C in the dark.

www.novusbio.com



technical@novusbio.com

Protocols, Publications, Related Products, Reviews, Research Tools and Images at:
www.novusbio.com/NB100-402C

Updated 10/23/2024 v.20.1

Earn rewards for product
reviews and publications.

Submit a publication at www.novusbio.com/publications

Submit a review at www.novusbio.com/reviews/destination/NB100-402C



NB100-402C

SLC31A1/CTR1 Antibody [DyLight 650]

Product Information

Unit Size	0.1 ml
Concentration	Please see the vial label for concentration. If unlisted please contact technical services.
Storage	Store at 4C in the dark.
Clonality	Polyclonal
Preservative	0.05% Sodium Azide
Isotype	IgG
Conjugate	DyLight 650
Purity	Immunogen affinity purified
Buffer	50mM Sodium Borate

Product Description

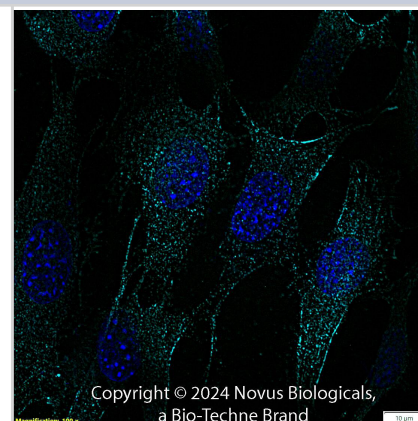
Host	Rabbit
Gene ID	1317
Gene Symbol	SLC31A1
Species	Human, Mouse, Rat, Porcine, Canine, Xenopus, Zebrafish
Reactivity Notes	Canine reactivity reported in scientific literature (PMID: 29901089).
Immunogen	A synthetic peptide derived from a C-terminal sequence of human SLC31A1/CTR1 [Uniprot: O15431]
Notes	DyLight (R) is a trademark of Thermo Fisher Scientific Inc. and its subsidiaries.

Product Application Details

Applications	Western Blot, Immunocytochemistry/ Immunofluorescence, Immunohistochemistry, Immunohistochemistry-Frozen, Immunohistochemistry-Paraffin
Recommended Dilutions	Western Blot, Immunohistochemistry, Immunocytochemistry/ Immunofluorescence, Immunohistochemistry-Paraffin, Immunohistochemistry-Frozen
Application Notes	Optimal dilution of this antibody should be experimentally determined.

Images

SLC31A1/CRT1 was detected in immersion fixed NIH3T3 Mouse fibroblast cell line using Rabbit anti-SLC31A1/CRT1 Antigen Affinity-purified Polyclonal Antibody conjugated to DyLight 650 (Catalog # NB100-402C) (light blue) at 10 µg/mL overnight at 4C. Cells were counterstained with DAPI (blue). Cells were imaged using a 100X objective and digitally deconvolved.





Novus Biologicals USA

10730 E. Briarwood Avenue
Centennial, CO 80112
USA
Phone: 303.730.1950
Toll Free: 1.888.506.6887
Fax: 303.730.1966
nb-customerservice@bio-techne.com

Bio-Techne Canada

21 Canmotor Ave
Toronto, ON M8Z 4E6
Canada
Phone: 905.827.6400
Toll Free: 855.668.8722
Fax: 905.827.6402
canada.inquires@bio-techne.com

Bio-Techne Ltd

19 Barton Lane
Abingdon Science Park
Abingdon, OX14 3NB, United Kingdom
Phone: (44) (0) 1235 529449
Free Phone: 0800 37 34 15
Fax: (44) (0) 1235 533420
info.EMEA@bio-techne.com

General Contact Information

www.novusbio.com
Technical Support: nb-technical@bio-techne.com
Orders: nb-customerservice@bio-techne.com
General: novus@novusbio.com

Products Related to NB100-402C

NBP2-24891C	Rabbit IgG Isotype Control [DyLight 650]
NB100-402H	SLC31A1/CTR1 Antibody [HRP]
NB100-402PEP	SLC31A1/CTR1 Antibody Blocking Peptide
NBP3-27409	Human SLC31A1/CTR1 ELISA Kit (Colorimetric)

Limitations

This product is for research use only and is not approved for use in humans or in clinical diagnosis. Primary Antibodies are guaranteed for 1 year from date of receipt.

For more information on our 100% guarantee, please visit www.novusbio.com/guarantee

Earn gift cards/discounts by submitting a review: www.novusbio.com/reviews/submit/NB100-402C

Earn gift cards/discounts by submitting a publication using this product:
www.novusbio.com/publications

