

Product Datasheet

CBP/KAT3A Antibody - BSA Free NB100-382

Unit Size: 100 ul

Store at 4C. Do not freeze.

www.novusbio.com



technical@novusbio.com

Publications: 1

Protocols, Publications, Related Products, Reviews, Research Tools and Images at:
www.novusbio.com/NB100-382

Updated 2/21/2025 v.20.1

Earn rewards for product
reviews and publications.

Submit a publication at www.novusbio.com/publications

Submit a review at www.novusbio.com/reviews/destination/NB100-382



NB100-382

CBP/KAT3A Antibody - BSA Free

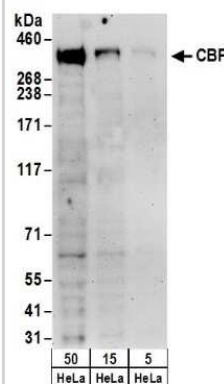
Product Information	
Unit Size	100 ul
Concentration	1.0 mg/ml
Storage	Store at 4C. Do not freeze.
Clonality	Polyclonal
Preservative	0.09% Sodium Azide
Isotype	IgG
Purity	Immunogen affinity purified
Buffer	Tris-Citrate/Phosphate (pH 7.0 - 8.0)

Product Description	
Host	Rabbit
Gene ID	1387
Gene Symbol	CREBBP
Species	Human
Immunogen	The immunogen recognized by this antibody maps to a region between residues 2375 and 2425 of human CREB Binding Protein using the numbering given in entry NP_004371.1 (GenelD 1387).

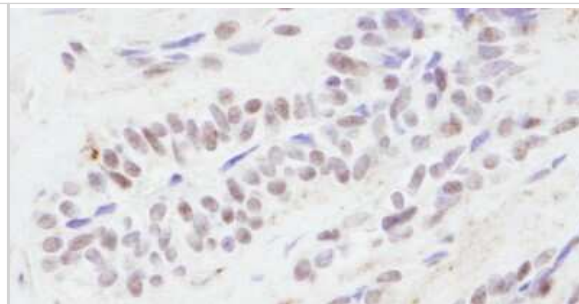
Product Application Details	
Applications	Western Blot, Immunohistochemistry, Immunohistochemistry-Paraffin, Immunoprecipitation
Recommended Dilutions	Western Blot 1:1000 - 1:25000, Immunohistochemistry 1:200 - 1:1000, Immunoprecipitation 1-4 ug/mg of lysate, Immunohistochemistry-Paraffin 1:200 - 1:1000
Application Notes	By immunoprecipitation, this antibody recognizes a band at ~240 kDa, representing CBP. The investigator should determine the optimal working dilution for a specific application. Epitope retrieval with citrate buffer pH6.0 is recommended.

Images

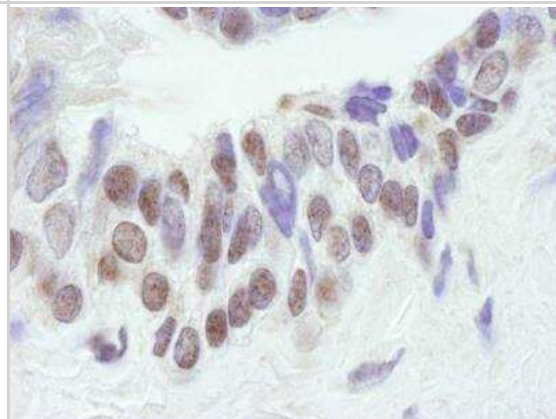
Western Blot: CBP/KAT3A Antibody [NB100-382] - Detection of Human CBP by Western Blot. Samples: Whole cell lysate (5, 15 and 50 ug) from HeLa cells. Antibodies: Affinity purified rabbit anti-CBP antibody NB100-382 used for WB at 0.4 ug/ml. Detection: Chemiluminescence with an exposure time of 3 minutes.



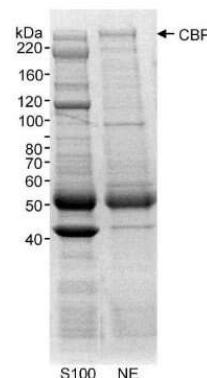
Immunohistochemistry: CBP/KAT3A Antibody [NB100-382] - Sample: FFPE section of human prostate carcinoma. Antibody: Affinity purified rabbit anti-CBP used at a dilution of 1:500 (2ug/ml). Detection: DAB staining using Immunohistochemistry Accessory Kit.



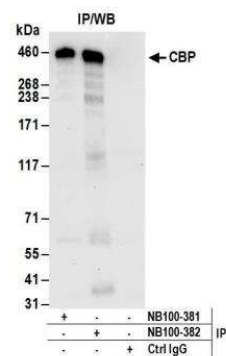
Immunohistochemistry: CBP/KAT3A Antibody [NB100-382] - FFPE section of human prostate adenocarcinoma. Antibody used at a dilution of 1:250. Detection: DAB.



Immunoprecipitation: CBP/KAT3A Antibody [NB100-382] - Samples: Nuclear (NE) or cytoplasmic (S100) extract (10 mg) from HeLa cells. Antibody: Affinity purified rabbit anti-CBP used at 20 ug/10 mg extract. Detection: Coomassie Brilliant Blue R250 staining of SDS-PAGE gel followed by mass spectrometry to confirm the identity of the band that is CBP.



Immunoprecipitation: CBP/KAT3A Antibody [NB100-382] - Detection of human CBP by western blot of immunoprecipitates. Samples: Whole cell lysate (1 mg for IP; 20% of IP loaded) from HeLa cells. Antibodies: Affinity purified rabbit anti-CBP antibody NB100-382 used for IP at 6 ug/mg lysate. CBP was also immunoprecipitated by rabbit anti-CBP antibody NB100-381. For blotting immunoprecipitated CBP, NB100-382 was used at 1 ug/ml. Detection: Chemiluminescence with an exposure time of 30 seconds.



Publications

Wu Y, Zhang Z, Cenciarini ME et al. Tamoxifen resistance in breast cancer is regulated by the EZH2-ERa-GREB1 transcriptional axis. *Cancer Res.* 2017-12-06 [PMID: 29212856] (Human)



Novus Biologicals USA

10730 E. Briarwood Avenue
Centennial, CO 80112
USA
Phone: 303.730.1950
Toll Free: 1.888.506.6887
Fax: 303.730.1966
nb-customerservice@bio-techne.com

Bio-Techne Canada

21 Canmotor Ave
Toronto, ON M8Z 4E6
Canada
Phone: 905.827.6400
Toll Free: 855.668.8722
Fax: 905.827.6402
canada.inquires@bio-techne.com

Bio-Techne Ltd

19 Barton Lane
Abingdon Science Park
Abingdon, OX14 3NB, United Kingdom
Phone: (44) (0) 1235 529449
Free Phone: 0800 37 34 15
Fax: (44) (0) 1235 533420
info.EMEA@bio-techne.com

General Contact Information

www.novusbio.com
Technical Support: nb-technical@bio-techne.com
Orders: nb-customerservice@bio-techne.com
General: novus@novusbio.com

Products Related to NB100-382

HAF008	Goat anti-Rabbit IgG Secondary Antibody [HRP]
NB7160	Goat anti-Rabbit IgG (H+L) Secondary Antibody [HRP]
NBP2-24891	Rabbit IgG Isotype Control
H00001387-Q01-10ug	Recombinant Human CBP/KAT3A GST (N-Term) Protein

Limitations

This product is for research use only and is not approved for use in humans or in clinical diagnosis. Primary Antibodies are guaranteed for 1 year from date of receipt.

For more information on our 100% guarantee, please visit www.novusbio.com/guarantee

Earn gift cards/discounts by submitting a review: www.novusbio.com/reviews/submit/NB100-382

Earn gift cards/discounts by submitting a publication using this product:
www.novusbio.com/publications

