

# Product Datasheet

## Casein Kinase 2 alpha Antibody - BSA Free NB100-376

Unit Size: 100 ul

Store at 4C. Do not freeze.

[www.novusbio.com](http://www.novusbio.com)



[technical@novusbio.com](mailto:technical@novusbio.com)

### Publications: 3

Protocols, Publications, Related Products, Reviews, Research Tools and Images at:  
[www.novusbio.com/NB100-376](http://www.novusbio.com/NB100-376)

Updated 2/21/2025 v.20.1

Earn rewards for product  
reviews and publications.

Submit a publication at [www.novusbio.com/publications](http://www.novusbio.com/publications)

Submit a review at [www.novusbio.com/reviews/destination/NB100-376](http://www.novusbio.com/reviews/destination/NB100-376)



**NB100-376****Casein Kinase 2 alpha Antibody - BSA Free****Product Information**

<b>Unit Size</b>	100 ul
<b>Concentration</b>	1.0 mg/ml
<b>Storage</b>	Store at 4C. Do not freeze.
<b>Clonality</b>	Polyclonal
<b>Preservative</b>	0.09% Sodium Azide
<b>Isotype</b>	IgG
<b>Purity</b>	Immunogen affinity purified
<b>Buffer</b>	Tris-Citrate/Phosphate (pH 7.0 - 8.0)

**Product Description**

<b>Description</b>	This antibody can be used as the primary antibody in a PLA assay with the following as complementing antibodies:NB200-171, NB100-97831
<b>Host</b>	Rabbit
<b>Gene ID</b>	1457
<b>Gene Symbol</b>	CSNK2A1
<b>Species</b>	Human
<b>Immunogen</b>	The immunogen recognized by this antibody maps to a region between residues 1 and 50 of human Casein Kinase 2, alpha 1 using the numbering given in entry NP_001886.1 (GeneID 1457).
<b>Notes</b>	This antibody can be used as the primary antibody in a PLA assay with the following as complementing antibodies:NB200-171, NB100-97831

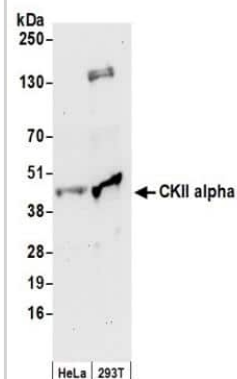
**Product Application Details**

<b>Applications</b>	Western Blot, Immunoprecipitation (Negative), Knockdown Validated
<b>Recommended Dilutions</b>	Western Blot 1:1000-1:5000, Immunoprecipitation (Negative), Knockdown Validated
<b>Application Notes</b>	Not recommended for immunoprecipitation (use NB 100-378 for IP). WB of lysates performed using standard western blot reagents and 4-20% SDS-PAGE.

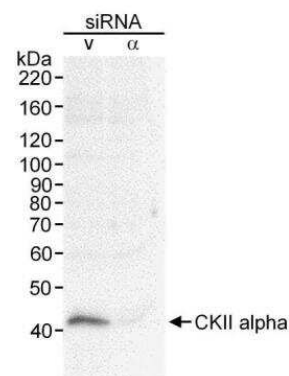


## Images

Western Blot: Casein Kinase 2 alpha Antibody [NB100-376] - Detection of Human CKII alpha by Western Blot. Samples: Whole cell lysate (50 ug) from HeLa and 293T cells prepared using NETN lysis buffer. Antibody: Affinity purified rabbit anti-CKII alpha antibody NB100-376 used for WB at 0.2 ug/ml. Detection: Chemiluminescence with an exposure time of 30 seconds.



Western Blot: Casein Kinase 2 alpha Antibody [NB100-376] - RIPA extract (30 ug) from HeLa cells treated with CKII alpha siRNA or vimentin siRNA (v). Antibody used at 0.33 ug/ml.



## Publications

Laishram RS, Barlow CA, Anderson RA et al. CKI isoforms alpha and ? regulate Star-PAP target messages by controlling Star-PAP poly(A) polymerase activity and phosphoinositide stimulation. *Nucleic Acids Res* 2011-10-01 [PMID: 21729869]

Wang D, Jang DJ. Protein kinase CK2 regulates cytoskeletal reorganization during ionizing radiation-induced senescence of human mesenchymal stem cells. *Cancer Res* 2009-10-01 [PMID: 19826041]

Rozanov DV, Savinov AY, Williams R et al. Molecular signature of MT1-MMP: transactivation of the downstream universal gene network in cancer. *Cancer Res* 2008-06-01 [PMID: 18519667]



### **Novus Biologicals USA**

10730 E. Briarwood Avenue  
Centennial, CO 80112  
USA  
Phone: 303.730.1950  
Toll Free: 1.888.506.6887  
Fax: 303.730.1966  
nb-customerservice@bio-techne.com

### **Bio-Techne Canada**

21 Canmotor Ave  
Toronto, ON M8Z 4E6  
Canada  
Phone: 905.827.6400  
Toll Free: 855.668.8722  
Fax: 905.827.6402  
canada.inquires@bio-techne.com

### **Bio-Techne Ltd**

19 Barton Lane  
Abingdon Science Park  
Abingdon, OX14 3NB, United Kingdom  
Phone: (44) (0) 1235 529449  
Free Phone: 0800 37 34 15  
Fax: (44) (0) 1235 533420  
info.EMEA@bio-techne.com

### **General Contact Information**

www.novusbio.com  
Technical Support: nb-technical@bio-techne.com  
Orders: nb-customerservice@bio-techne.com  
General: novus@novusbio.com

### **Products Related to NB100-376**

---

HAF008	Goat anti-Rabbit IgG Secondary Antibody [HRP]
NB7160	Goat anti-Rabbit IgG (H+L) Secondary Antibody [HRP]
NBP2-24891	Rabbit IgG Isotype Control
NBC1-18386	Recombinant Human Casein Kinase 2 alpha His Protein

---

### **Limitations**

This product is for research use only and is not approved for use in humans or in clinical diagnosis. Primary Antibodies are guaranteed for 1 year from date of receipt.

For more information on our 100% guarantee, please visit [www.novusbio.com/guarantee](http://www.novusbio.com/guarantee)

Earn gift cards/discounts by submitting a review: [www.novusbio.com/reviews/submit/NB100-376](http://www.novusbio.com/reviews/submit/NB100-376)

Earn gift cards/discounts by submitting a publication using this product:  
[www.novusbio.com/publications](http://www.novusbio.com/publications)

