

Product Datasheet

RPA2 Antibody - BSA Free NB100-332

Unit Size: 100 ul

Store at 4C. Do not freeze.

www.novusbio.com



technical@novusbio.com

Publications: 7

Protocols, Publications, Related Products, Reviews, Research Tools and Images at:
www.novusbio.com/NB100-332

Updated 2/24/2025 v.20.1

Earn rewards for product
reviews and publications.

Submit a publication at www.novusbio.com/publications

Submit a review at www.novusbio.com/reviews/destination/NB100-332



NB100-332

RPA2 Antibody - BSA Free

Product Information

Unit Size	100 ul
Concentration	1.0 mg/ml
Storage	Store at 4C. Do not freeze.
Clonality	Polyclonal
Preservative	0.09% Sodium Azide
Isotype	IgG
Purity	Immunogen affinity purified
Buffer	Tris-Citrate/Phosphate (pH 7.0 - 8.0)

Product Description

Host	Rabbit
Gene ID	6118
Gene Symbol	RPA2
Species	Human, Mouse
Immunogen	The immunogen recognized by this antibody maps to a region between residue 225 and the C-terminus (residue 270) of human Replication Protein A2 (32kD) using the numbering given in entry NP_002937.1 (GenelD 6118).

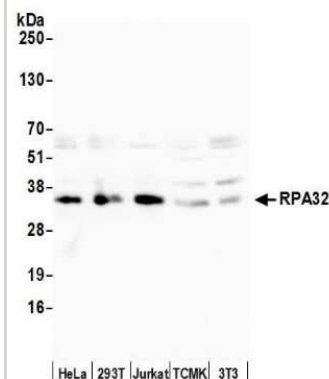
Product Application Details

Applications	Western Blot, Simple Western, Flow Cytometry, Immunohistochemistry, Immunohistochemistry-Paraffin, Immunoprecipitation
Recommended Dilutions	Western Blot 1:2000-1:10000, Simple Western, Flow Cytometry, Immunohistochemistry 1:2000 - 1:10000, Immunoprecipitation 2 - 5 ug/mg lysate, Immunohistochemistry-Paraffin 1:2000 - 1:10000
Application Notes	Epitope retrieval with Tris-EDTA pH9.0 is recommended for FFPE tissue sections. See Simple Western Antibody Database for Simple Western validation: tested in Human squamous carcinoma cells; antibody dilution of 1:500; separated by charge

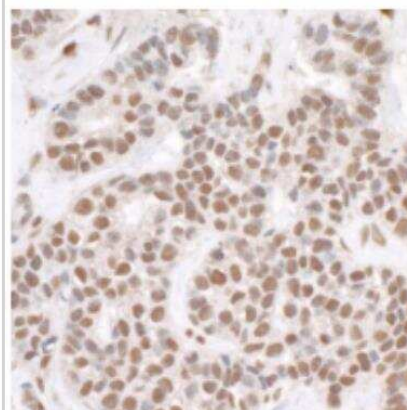


Images

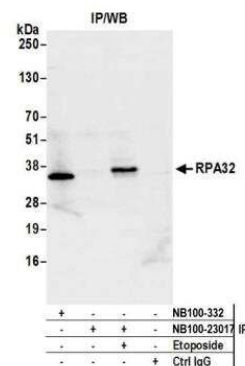
Western Blot: RPA2 Antibody [NB100-332] - Detection of human and mouse RPA32 by western blot. Samples: Whole cell lysate (5 ug) from HeLa, HEK293T, Jurkat, mouse TCMK-1, and mouse NIH 3T3 cells prepared using NETN lysis buffer. Antibody: Affinity purified rabbit anti-RPA32 antibody NB100-332 used for WB at 0.1 ug/ml. Detection: Chemiluminescence with an exposure time of 10 seconds.



Immunohistochemistry-Paraffin: RPA2 Antibody [NB100-332] - Human breast carcinoma. Antibody: Affinity purified rabbit anti-RPA32 used at a dilution of 1:5,000 (0.2 ug/ml). Detection: DAB



Immunoprecipitation: RPA2 Antibody [NB100-332] - Detection of human RPA32 by western blot of immunoprecipitates. Samples: Whole cell lysate (1.0 mg per IP reaction; 20% of IP loaded) from HeLa cells treated with 100 uM EPE for 4 hours (+) or mock treated (-). Antibodies: Affinity purified rabbit anti-RPA32 antibody NB100-332 used for IP at 3 ug per reaction. RPA32 was also immunoprecipitated by rabbit anti-Phospho RPA32 (S4/S8) recombinant monoclonal antibody [BL-165-5F1] (NB100-23017). For blotting immunoprecipitated Phospho RPA32 (S4/S8), NB100-23017 was used at 1:1000. Detection: Chemiluminescence with an exposure time of 3 minutes.



Publications

Nicole L Batenburg, Dana J Sowa, John R Walker, Sara N Andres, Xu-Dong Zhu CSB and SMARCAL1 compete for RPA32 at stalled forks and differentially control the fate of stalled forks in BRCA2-deficient cells *Nucleic Acids Research* 2024-05-22 [PMID: 38416570]

Sertic S, Mollica A et al. Coordinated Activity of Y Family TLS Polymerases and EXO1 Protects Non-S Phase Cells from UV-Induced Cytotoxic Lesions. *Mol Cell* 2018-05-04 [PMID: 29551515] (WB, Human)

Gillespie KA, Mehta KP, Laimins LA et al. Human papillomaviruses recruit cellular DNA repair and homologous recombination factors to viral replication centers. *J Virol* 2012-09-01 [PMID: 22740399]

Boichuk S, Hu L, Hein J, Gjoerup OV. Multiple DNA damage signaling and repair pathways deregulated by simian virus 40 large T antigen. *J Virol* 2010-08-01 [PMID: 20519379]

Ciccia A, Bredemeyer AL, Sowa ME et al. The SIOD disorder protein SMARCAL1 is an RPA-interacting protein involved in replication fork restart. *Genes Dev* 2009-09-30 [PMID: 19793862]

Xu D, Guo R, Sobeck A et al. RMI, a new OB-fold complex essential for Bloom syndrome protein to maintain genome stability. *Genes Dev* 2008-10-01 [PMID: 18923082]

Stewart GS, Stankovic T, Byrd PJ et al. RIDDLE immunodeficiency syndrome is linked to defects in 53BP1-mediated DNA damage signaling. *Proc Natl Acad Sci U S A* 2007-10-01 [PMID: 17940005]





Novus Biologicals USA

10730 E. Briarwood Avenue
Centennial, CO 80112
USA
Phone: 303.730.1950
Toll Free: 1.888.506.6887
Fax: 303.730.1966
nb-customerservice@bio-techne.com

Bio-Techne Canada

21 Canmotor Ave
Toronto, ON M8Z 4E6
Canada
Phone: 905.827.6400
Toll Free: 855.668.8722
Fax: 905.827.6402
canada.inquires@bio-techne.com

Bio-Techne Ltd

19 Barton Lane
Abingdon Science Park
Abingdon, OX14 3NB, United Kingdom
Phone: (44) (0) 1235 529449
Free Phone: 0800 37 34 15
Fax: (44) (0) 1235 533420
info.EMEA@bio-techne.com

General Contact Information

www.novusbio.com
Technical Support: nb-technical@bio-techne.com
Orders: nb-customerservice@bio-techne.com
General: novus@novusbio.com

Products Related to NB100-332

NBL1-15489	RPA2 Overexpression Lysate
HAF008	Goat anti-Rabbit IgG Secondary Antibody [HRP]
NB7160	Goat anti-Rabbit IgG (H+L) Secondary Antibody [HRP]
NBP2-24891	Rabbit IgG Isotype Control

Limitations

This product is for research use only and is not approved for use in humans or in clinical diagnosis. Primary Antibodies are guaranteed for 1 year from date of receipt.

For more information on our 100% guarantee, please visit www.novusbio.com/guarantee

Earn gift cards/discounts by submitting a review: www.novusbio.com/reviews/submit/NB100-332

Earn gift cards/discounts by submitting a publication using this product:
www.novusbio.com/publications

