

Product Datasheet

FEN-1 Antibody - BSA Free

NB100-321

Unit Size: 100 ul

Store at 4C. Do not freeze.

www.novusbio.com



technical@novusbio.com

Publications: 6

Protocols, Publications, Related Products, Reviews, Research Tools and Images at:
www.novusbio.com/NB100-321

Updated 2/21/2025 v.20.1

Earn rewards for product
reviews and publications.

Submit a publication at www.novusbio.com/publications

Submit a review at www.novusbio.com/reviews/destination/NB100-321



NB100-321

FEN-1 Antibody - BSA Free

Product Information	
Unit Size	100 ul
Concentration	1.0 mg/ml
Storage	Store at 4C. Do not freeze.
Clonality	Polyclonal
Preservative	0.09% Sodium Azide
Isotype	IgG
Purity	Immunogen affinity purified
Buffer	Tris-Citrate/Phosphate (pH 7.0 - 8.0)

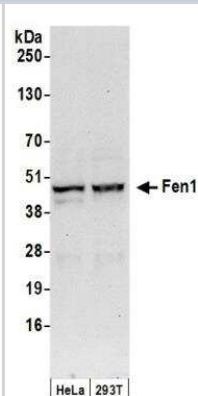
Product Description	
Host	Rabbit
Gene ID	2237
Gene Symbol	FEN1
Species	Human
Immunogen	The immunogen recognized by this antibody maps to a region between residues 250 and 300 of human Flap Structure Endonuclease 1 using the numbering given in entry NP_004102.1 (GeneID 2237).

Product Application Details	
Applications	Western Blot, Immunohistochemistry, Immunohistochemistry-Paraffin, Immunoprecipitation
Recommended Dilutions	Western Blot 1:2000 - 1:10000, Immunohistochemistry, Immunoprecipitation 2 - 10 ug/mg lysate, Immunohistochemistry-Paraffin 1:200- 1:1000
Application Notes	Epitope retrieval with citrate buffer pH6.0 is recommended for FFPE tissue sections. 16-18 hour incubation is recommended

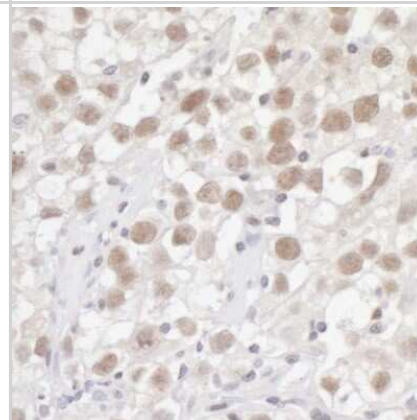


Images

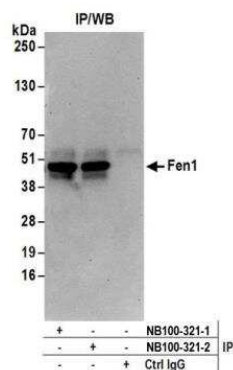
Western Blot: FEN-1 Antibody [NB100-321] - Detection of Human Fen1 by Western Blot. Samples: Whole cell lysate (50 ug) from HeLa and 293T cells prepared using NETN lysis buffer. Antibodies: Affinity purified rabbit anti-Fen1 antibody NB100-321 used for WB at 0.1 ug/ml. Detection: Chemiluminescence with an exposure time of 30 seconds.



Immunohistochemistry-Paraffin: FEN-1 Antibody [NB100-321] - FFPE section of human testicular seminoma. Antibody: Affinity purified rabbit anti-Fen1 (NB100-321) used at a dilution of 1:1000 (1ug/ml). Detection: DAB



Immunoprecipitation: FEN-1 Antibody [NB100-321] - Detection of human Fen1 by western blot of immunoprecipitates. Samples: Whole cell lysate (0.5 or 1.0 mg per IP reaction; 20% of IP loaded) from HeLa cells prepared using NETN lysis buffer. Antibodies: Affinity purified rabbit anti-Fen1 antibody NB100-321 (lot NB100-321-2) used for IP at 6 ug per reaction. Fen1 was also immunoprecipitated by a previous lot of this antibody (lot NB100-321-1). For blotting immunoprecipitated Fen1, NB100-321 was used at 1 ug/ml. Detection: Chemiluminescence with an exposure time of 30 seconds.



Publications

Moreli JB, Santos JH, Lorenzon-Ojea AR et al. Hyperglycemia Differentially Affects Maternal and Fetal DNA Integrity and DNA Damage Response *Int. J. Biol. Sci.* 2016-03-29 [PMID: 27019630]

Verdun RE, Karlseder J. The DNA damage machinery and homologous recombination pathway act consecutively to protect human telomeres. *Cell* 2006-11-17 [PMID: 17110331]

Holen T, Moe SE, Sorbo JG et al. Tolerated wobble mutations in siRNAs decrease specificity, but can enhance activity in vivo. *Nucleic Acids Res* 2005-08-01 [PMID: 16113241]

Liu P, Qian L, Sung JS et al. Removal of oxidative DNA damage via FEN1-dependent long-patch base excision repair in human cell mitochondria. *Mol Cell Biol* 2008-08-01 [PMID: 18541666]

Farina A, Shin J-H, Kim D-H et al. Studies with the Human Cohesin Establishment Factor, ChIR1: ASSOCIATION OF ChIR1 WITH Ctf18-RFC Fen1. *J Biol Chem*;283(30):20925-20936. 2008-01-01 [PMID: 18499658]

Yan T, Seo Y, Kinsella TJ et al. Differential cellular responses to prolonged LDR-IR in MLH1-proficient and MLH1-deficient colorectal cancer HCT116 cells. *Clin Cancer Res* 2009-11-01 [PMID: 19861440]



Novus Biologicals USA

10730 E. Briarwood Avenue
Centennial, CO 80112
USA
Phone: 303.730.1950
Toll Free: 1.888.506.6887
Fax: 303.730.1966
nb-customerservice@bio-techne.com

Bio-Techne Canada

21 Canmotor Ave
Toronto, ON M8Z 4E6
Canada
Phone: 905.827.6400
Toll Free: 855.668.8722
Fax: 905.827.6402
canada.inquires@bio-techne.com

Bio-Techne Ltd

19 Barton Lane
Abingdon Science Park
Abingdon, OX14 3NB, United Kingdom
Phone: (44) (0) 1235 529449
Free Phone: 0800 37 34 15
Fax: (44) (0) 1235 533420
info.EMEA@bio-techne.com

General Contact Information

www.novusbio.com
Technical Support: nb-technical@bio-techne.com
Orders: nb-customerservice@bio-techne.com
General: novus@novusbio.com

Products Related to NB100-321

NB800-PC1	HeLa Whole Cell Lysate
HAF008	Goat anti-Rabbit IgG Secondary Antibody [HRP]
NB7160	Goat anti-Rabbit IgG (H+L) Secondary Antibody [HRP]
NBP2-24891	Rabbit IgG Isotype Control

Limitations

This product is for research use only and is not approved for use in humans or in clinical diagnosis. Primary Antibodies are guaranteed for 1 year from date of receipt.

For more information on our 100% guarantee, please visit www.novusbio.com/guarantee

Earn gift cards/discounts by submitting a review: www.novusbio.com/reviews/submit/NB100-321

Earn gift cards/discounts by submitting a publication using this product:
www.novusbio.com/publications

