

# Product Datasheet

## BARD1 Antibody - BSA Free NB100-319

Unit Size: 100 ul

Store at 4C. Do not freeze.

[www.novusbio.com](http://www.novusbio.com)



[technical@novusbio.com](mailto:technical@novusbio.com)

**Publications: 14**

Protocols, Publications, Related Products, Reviews, Research Tools and Images at:  
[www.novusbio.com/NB100-319](http://www.novusbio.com/NB100-319)

Updated 9/9/2025 v.20.1

Earn rewards for product  
reviews and publications.

Submit a publication at [www.novusbio.com/publications](http://www.novusbio.com/publications)

Submit a review at [www.novusbio.com/reviews/destination/NB100-319](http://www.novusbio.com/reviews/destination/NB100-319)



**NB100-319**

BARD1 Antibody - BSA Free

Product Information	
Unit Size	100 ul
Concentration	1.0 mg/ml
Storage	Store at 4C. Do not freeze.
Clonality	Polyclonal
Preservative	0.09% Sodium Azide
Isotype	IgG
Purity	Immunogen affinity purified
Buffer	Tris-Citrate/Phosphate (pH 7.0 - 8.0)

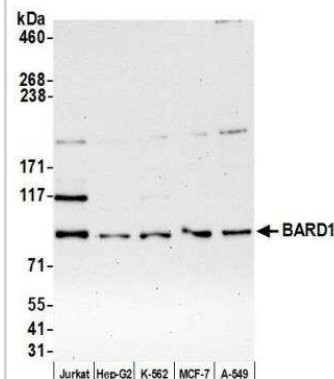
Product Description	
Description	Novus Biologicals Rabbit BARD1 Antibody - BSA Free (NB100-319) is a polyclonal antibody validated for use in WB and IP. Anti-BARD1 Antibody: Cited in 14 publications. All Novus Biologicals antibodies are covered by our 100% guarantee.
Host	Rabbit
Gene ID	580
Gene Symbol	BARD1
Species	Human
Immunogen	The immunogen recognized by this antibody maps to a region between residues 250 and 300 of human BRCA1-associated RING Domain 1 using the numbering given in entry NP_000456.1 (GeneID 580).

Product Application Details	
Applications	Western Blot, Immunoprecipitation
Recommended Dilutions	Western Blot 1:500 - 1:2500, Immunoprecipitation 2 - 10 ug/mg lysate
Application Notes	*The investigator should determine the optimal working dilution for a specific application.



## Images

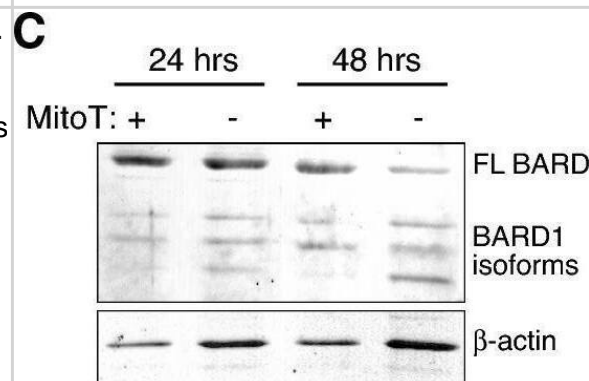
**Western Blot: BARD1 Antibody [NB100-319]** - Detection of human BARD1 by western blot. Samples: Whole cell lysate (10 ug) from Jurkat, Hep-G2, K-562, MCF-7, and A-549 cells prepared using NETN lysis buffer. Antibody: Affinity purified rabbit anti-BARD1 antibody NB100-319 used for WB at 0.04 ug/ml. Detection: Chemiluminescence with an exposure time of 30 seconds.



**Immunoprecipitation: BARD1 Antibody [NB100-319]** - Detection of human BARD1 by western blot of immunoprecipitates. Samples: Whole cell lysate (1.0 mg per IP reaction; 20% of IP loaded) from MCF-7 cells prepared using NETN lysis buffer. Antibodies: Affinity purified rabbit anti-BARD1 antibody NB100-319 (NB100-319 lot 4) used for IP at 6 ug per reaction. BARD1 was also immunoprecipitated by a previous lot of this antibody (NB100-319 lot 3). For blotting immunoprecipitated BARD1, NB100-319 was used at 0.04 ug/ml. Detection: Chemiluminescence with an exposure time of 10 seconds.



MitoT increases the expression of anti-apoptotic Bcl-2/BARD1 pathways. A Fold change of differentially expressed (DE) genes contained within the GO terms related to apoptosis, cell death, and/or responses to different stimuli. B qRT-PCR analysis of BARD1 mRNA expression levels in FACS-sorted CD3+ T cells after 24-h post-mitoception with MSC derived-MT (n = 4). C Representative western blots of BARD1 in FACS-sorted CD3+ MitoTpos cells and MitoTneg cells after 24 or 48 h post-mitoception. D Fold change quantification of proteins showed in C (n = 3). E Ingenuity Pathway analysis for Bcl-2 gene network for the DE genes denoted in A. F qRT-PCR of Bcl-2 family gene expression in FACS-sorted CD3+ MitoTpos cells and MitoTneg cells after 24 h post-mitoception (n = 4). For figures B and D: graphs show mean +/- SEM and statistical analysis by unpaired t-test. For figure F: graph shows mean +/- SEM and statistical analysis by unpaired Mann-Whitney test (\*p < 0.05, relative to MitoTneg control). All replicates are biological Image collected and cropped by CiteAb from the following open publication (<https://pubmed.ncbi.nlm.nih.gov/39334383>), licensed under a CC-BY license. Not internally tested by Novus Biologicals.



## Publications

Deng J, Zhang T, Liu F et al. CRL4-DCAF8L2 E3 ligase promotes ubiquitination and degradation of BARD1  
Biochemical and biophysical research communications [PMID: 35487060]

Tembe V, Martino-Echarri E, Marzec KA et al. The BARD1 BRCT domain contributes to p53 binding, cytoplasmic and mitochondrial localization, and apoptotic function. *Cell Signal* 2015-06-03 [PMID: 26022179]

Zhang YQ, Pilyugin M, Kuester D et al. Expression of oncogenic BARD1 isoforms affects colon cancer progression and correlates with clinical outcome. *Br J Cancer* 2012-08-01 [PMID: 22814582]

Chapman JR, Sossick AJ, Boulton SJ et al. BRCA1-associated exclusion of 53BP1 from DNA damage sites underlies temporal control of DNA repair. *J Cell Sci.* 2012-08-01 [PMID: 22553214]

Mok MT, Henderson BR. The in vivo dynamic organization of BRCA1-A complex proteins at DNA damage-induced nuclear foci. *Traffic* 2012-06-01 [PMID: 22420687]

Bosse KR, Diskin SJ, Cole KA et al. Common variation at BARD1 results in the expression of an oncogenic isoform that influences neuroblastoma susceptibility and oncogenicity. *Cancer Res* 2012-04-01 [PMID: 22350409]

Wu W, Sato K, Koike A et al. HERC2 is an E3 ligase that targets BRCA1 for degradation. *Cancer Res* 2010-08-01 [PMID: 20631078]

De Nicolo A, Parisini E, Zhong Q et al. Multimodal assessment of protein functional deficiency supports pathogenicity of BRCA1 p.V1688del. *Cancer Res* 2009-09-01 [PMID: 19706752]

Ryser S, Dizin E, Jefford CE et al. Distinct roles of BARD1 isoforms in mitosis: full-length BARD1 mediates Aurora B degradation, cancer-associated BARD1beta scaffolds Aurora B and BRCA2. *Cancer Res* 2009-02-01 [PMID: 19176389]

Nishikawa H, Wu W, Koike A et al. BRCA1-associated protein 1 interferes with BRCA1/BARD1 RING heterodimer activity. *Cancer Res* 2009-01-01 [PMID: 19117993]

De Nicolo A, Tancredi M, Lombardi G et al. A novel breast cancer-associated BRIP1 (FANCJ/BACH1) germ-line mutation impairs protein stability and function. *Clin Cancer Res* 2008-07-01 [PMID: 18628483]

Li L, Ryser S, Dizin E et al. Oncogenic BARD1 isoforms expressed in gynecological cancers. *Cancer Res* 2007-12-01 [PMID: 18089818]

More publications at <http://www.novusbio.com/NB100-319>



### **Novus Biologicals USA**

10730 E. Briarwood Avenue  
Centennial, CO 80112  
USA  
Phone: 303.730.1950  
Toll Free: 1.888.506.6887  
Fax: 303.730.1966  
nb-customerservice@bio-techne.com

### **Bio-Techne Canada**

21 Canmotor Ave  
Toronto, ON M8Z 4E6  
Canada  
Phone: 905.827.6400  
Toll Free: 855.668.8722  
Fax: 905.827.6402  
canada.inquires@bio-techne.com

### **Bio-Techne Ltd**

19 Barton Lane  
Abingdon Science Park  
Abingdon, OX14 3NB, United Kingdom  
Phone: (44) (0) 1235 529449  
Free Phone: 0800 37 34 15  
Fax: (44) (0) 1235 533420  
info.EMEA@bio-techne.com

### **General Contact Information**

www.novusbio.com  
Technical Support: nb-technical@bio-techne.com  
Orders: nb-customerservice@bio-techne.com  
General: novus@novusbio.com

### **Products Related to NB100-319**

---

NBP2-33376H	Blue Marker Antibody (6F4-F6) [HRP]
HAF008	Goat anti-Rabbit IgG Secondary Antibody [HRP]
NB7160	Goat anti-Rabbit IgG (H+L) Secondary Antibody [HRP]
NBP2-24891	Rabbit IgG Isotype Control

---

### **Limitations**

This product is for research use only and is not approved for use in humans or in clinical diagnosis. Primary Antibodies are guaranteed for 1 year from date of receipt.

For more information on our 100% guarantee, please visit [www.novusbio.com/guarantee](http://www.novusbio.com/guarantee)

Earn gift cards/discounts by submitting a review: [www.novusbio.com/reviews/submit/NB100-319](http://www.novusbio.com/reviews/submit/NB100-319)

Earn gift cards/discounts by submitting a publication using this product:  
[www.novusbio.com/publications](http://www.novusbio.com/publications)

