

# Product Datasheet

## MCM3 Antibody - BSA Free

### NB100-289

Unit Size: 100 ul

Store at 4C. Do not freeze.

[www.novusbio.com](http://www.novusbio.com)



[technical@novusbio.com](mailto:technical@novusbio.com)

#### Publications: 3

Protocols, Publications, Related Products, Reviews, Research Tools and Images at:  
[www.novusbio.com/NB100-289](http://www.novusbio.com/NB100-289)

Updated 2/21/2025 v.20.1

Earn rewards for product  
reviews and publications.

Submit a publication at [www.novusbio.com/publications](http://www.novusbio.com/publications)

Submit a review at [www.novusbio.com/reviews/destination/NB100-289](http://www.novusbio.com/reviews/destination/NB100-289)



**NB100-289**

MCM3 Antibody - BSA Free

Product Information	
Unit Size	100 ul
Concentration	1.0 mg/ml
Storage	Store at 4C. Do not freeze.
Clonality	Polyclonal
Preservative	0.09% Sodium Azide
Isotype	IgG
Purity	Immunogen affinity purified
Buffer	Tris-Citrate/Phosphate (pH 7.0 - 8.0)

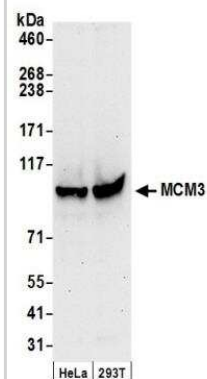
Product Description	
Host	Rabbit
Gene ID	4172
Gene Symbol	MCM3
Species	Human, Mouse
Immunogen	A 38-amino acid synthetic peptide, which represented a portion of human Minichromosome Maintenance Deficient 3 encoded in part by exons 10 and 11 (LocusLink ID 4172).

Product Application Details	
Applications	Western Blot, Immunohistochemistry, Immunohistochemistry-Paraffin, Immunoprecipitation
Recommended Dilutions	Western Blot 1:2000-1:10000, Immunohistochemistry 1:1000 to 1:5000, Immunoprecipitation 2-5 ug/mg lysate, Immunohistochemistry-Paraffin 1:1000 to 1:5000
Application Notes	Western blot and immunoprecipitation. Suggested working dilutions: Western Blot - 1: 2,000-1:10,000 Immunohistochemistry/Immunocytochemistry - ND Immunoprecipitation - 2 to 5 ug/mg lysate** *The investigator should determine the optimal working dilution for a specific application. **Use NB 100-288 (MCM2 antibody) to IP the MCM complex

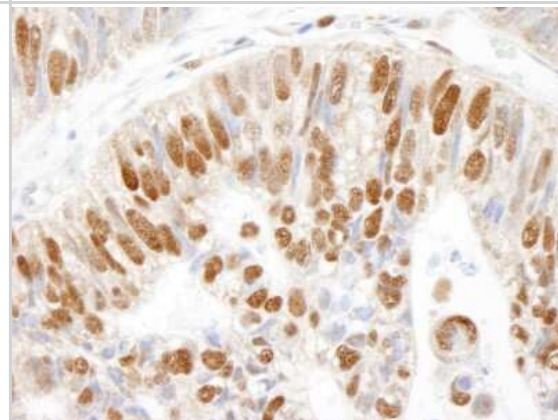


## Images

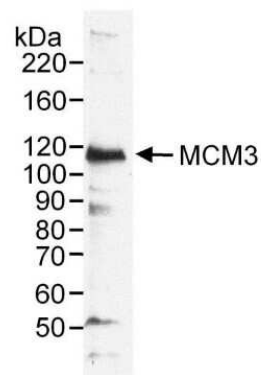
Western Blot: MCM3 Antibody [NB100-289] - Detection of Human MCM3 by Western Blot. Samples: Whole cell lysate (50 ug) from HeLa and 293T cells prepared using NETN lysis buffer. Antibody: Affinity purified rabbit anti-MCM3 antibody NB100-289 used for WB at 0.1 ug/ml. Detection: Chemiluminescence with an exposure time of 30 seconds.



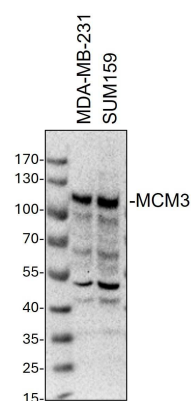
Immunohistochemistry: MCM3 Antibody [NB100-289] - Sample: FFPE section of human colon carcinoma. Antibody: Affinity purified rabbit anti-MCM3 used at a dilution of 1:1,000 (1ug/ml). Detection: DAB



Western Blot: MCM3 Antibody [NB100-289] - RIPA extract (50 ug) from HeLa cells. Antibody used at 0.2 ug/ml.



Western Blot: Rabbit Polyclonal MCM3 Antibody [NB100-289] - Whole cell lysates from MDA-MB-231 and SUM159 cells were loaded with 50 ug/lane. 10% SDS-PAGE. MCM3 Antibody (NB100-289) was used for primary antibody: 1:1000, 4h, overnight. Image from a verified customer review.



## Publications

Liu Y, Vaithiyalingam S, Shi Q et al. BID binds to replication protein A and stimulates ATR function following replicative stress. *Mol Cell Biol* 2011-11-01 [PMID: 21859891]

Kim JM, Kee Y, Gurtan A et al. Cell cycle-dependent chromatin loading of the Fanconi anemia core complex by FANCM/FAAP24. *Blood* 2008-05-01 [PMID: 18174376]

Hubbi ME, Luo W, Baek JH et al. MCM proteins are negative regulators of hypoxia-inducible factor 1 *Mol Cell* 2011-06-10 [PMID: 21658608]





### **Novus Biologicals USA**

10730 E. Briarwood Avenue  
Centennial, CO 80112  
USA  
Phone: 303.730.1950  
Toll Free: 1.888.506.6887  
Fax: 303.730.1966  
nb-customerservice@bio-techne.com

### **Bio-Techne Canada**

21 Canmotor Ave  
Toronto, ON M8Z 4E6  
Canada  
Phone: 905.827.6400  
Toll Free: 855.668.8722  
Fax: 905.827.6402  
canada.inquires@bio-techne.com

### **Bio-Techne Ltd**

19 Barton Lane  
Abingdon Science Park  
Abingdon, OX14 3NB, United Kingdom  
Phone: (44) (0) 1235 529449  
Free Phone: 0800 37 34 15  
Fax: (44) (0) 1235 533420  
info.EMEA@bio-techne.com

### **General Contact Information**

www.novusbio.com  
Technical Support: nb-technical@bio-techne.com  
Orders: nb-customerservice@bio-techne.com  
General: novus@novusbio.com

### **Products Related to NB100-289**

---

HAF008	Goat anti-Rabbit IgG Secondary Antibody [HRP]
NB7160	Goat anti-Rabbit IgG (H+L) Secondary Antibody [HRP]
NBP2-24891	Rabbit IgG Isotype Control
H00004172-Q01-10ug	Recombinant Human MCM3 GST (N-Term) Protein

---

### **Limitations**

This product is for research use only and is not approved for use in humans or in clinical diagnosis. Primary Antibodies are guaranteed for 1 year from date of receipt.

For more information on our 100% guarantee, please visit [www.novusbio.com/guarantee](http://www.novusbio.com/guarantee)

Earn gift cards/discounts by submitting a review: [www.novusbio.com/reviews/submit/NB100-289](http://www.novusbio.com/reviews/submit/NB100-289)

Earn gift cards/discounts by submitting a publication using this product:  
[www.novusbio.com/publications](http://www.novusbio.com/publications)

