

Product Datasheet

Cytochrome P450 17A1 Antibody NB100-2842

Unit Size: 0.1 mg

Store at -20C. Avoid freeze-thaw cycles.

www.novusbio.com



technical@novusbio.com

Publications: 3

Protocols, Publications, Related Products, Reviews, Research Tools and Images at:
www.novusbio.com/NB100-2842

Updated 10/23/2024 v.20.1

Earn rewards for product
reviews and publications.

Submit a publication at www.novusbio.com/publications

Submit a review at www.novusbio.com/reviews/destination/NB100-2842



NB100-2842**Cytochrome P450 17A1 Antibody**

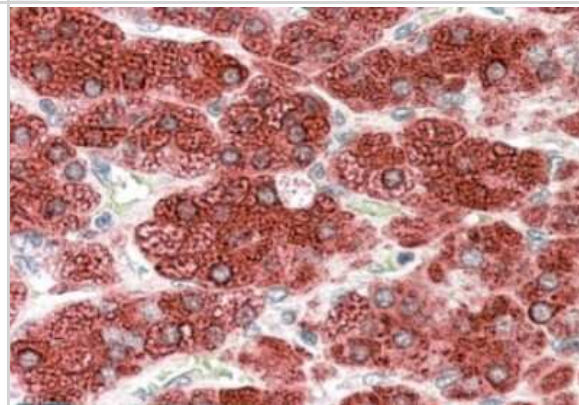
Product Information	
Unit Size	0.1 mg
Concentration	0.5 mg/ml
Storage	Store at -20C. Avoid freeze-thaw cycles.
Clonality	Polyclonal
Preservative	0.02% Sodium Azide
Isotype	IgG
Purity	Immunogen affinity purified
Buffer	Tris saline (20 mM Tris pH 7.3, 150 mM NaCl), 0.5% BSA
Product Description	
Host	Goat
Gene ID	1586
Gene Symbol	CYP17A1
Species	Human
Immunogen	Peptide with sequence C-LFKDGDQKLEK corresponding to internal region according to NP_000093.1.
Product Application Details	
Applications	Western Blot, Immunohistochemistry, Immunohistochemistry-Paraffin, Peptide ELISA
Recommended Dilutions	Western Blot 0.1 - 0.3 ug/ml, Immunohistochemistry 3 - 5 ug/ml, Immunohistochemistry-Paraffin 3 - 5 ug/ml, Peptide ELISA Detection limit 1:64000
Application Notes	WB: Approx. 60 kDa band observed in human ovary lysates (calculated MW of 57.4 kDa band according to NP_000093.1). IHC-P: Human adenal gland shows strong granular staining of the cytoplasm in medulla cells.

Images

Western Blot: Cytochrome P450 17A1 Antibody [NB100-2842] - (0.3ug/ml) staining of human ovary lysate (35ug protein in RIPA buffer). Primary incubation was 1 hour. Detected by chemiluminescence.

250kDa
150kDa
100kDa
75kDa
50kDa
37kDa
25kDa
20kDa
15kDa

Immunohistochemistry-Paraffin: Cytochrome P450 17A1 Antibody [NB100-2842] - (3.8ug/ml) staining of paraffin embedded Human Adrenal Gland. Steamed antigen retrieval with citrate buffer pH 6, AP-staining.



Publications

Ohnishi T, Ogawa Y, Saibara T et al. CYP17 polymorphism as a risk factor of tamoxifen-induced hepatic steatosis in breast cancer patients. *Oncol Rep* 2005-03-01 [PMID: 15706422]

Efstathiou E, Titus M, Wen S et al. Molecular Characterization of Enzalutamide-treated Bone Metastatic Castration-resistant Prostate Cancer. *Eur. Urol.* 2014-05-29 [PMID: 24882673] (IHC-P, Human)

Efstathiou E, Titus M, Tsavachidou D et al. Effects of abiraterone acetate on androgen signaling in castrate-resistant prostate cancer in bone. *J Clin Oncol* 2012-02-01 [PMID: 22184395] (IHC-P, Human)



Novus Biologicals USA

10730 E. Briarwood Avenue
Centennial, CO 80112
USA
Phone: 303.730.1950
Toll Free: 1.888.506.6887
Fax: 303.730.1966
nb-customerservice@bio-techne.com

Bio-Techne Canada

21 Canmotor Ave
Toronto, ON M8Z 4E6
Canada
Phone: 905.827.6400
Toll Free: 855.668.8722
Fax: 905.827.6402
canada.inquires@bio-techne.com

Bio-Techne Ltd

19 Barton Lane
Abingdon Science Park
Abingdon, OX14 3NB, United Kingdom
Phone: (44) (0) 1235 529449
Free Phone: 0800 37 34 15
Fax: (44) (0) 1235 533420
info.EMEA@bio-techne.com

General Contact Information

www.novusbio.com
Technical Support: nb-technical@bio-techne.com
Orders: nb-customerservice@bio-techne.com
General: novus@novusbio.com

Products Related to NB100-2842

NB820-59243	Human Ovary Whole Tissue Lysate (Adult Whole Normal)
NB100-2842PEP	Cytochrome P450 17A1 Peptide
HAF017	Rabbit anti-Goat IgG Secondary Antibody [HRP (Horseradish Peroxidase)]
HAF109	Donkey anti-Goat IgG Secondary Antibody [HRP (Horseradish Peroxidase)]
NB410-28088-1mg	Goat IgG Isotype Control

Limitations

This product is for research use only and is not approved for use in humans or in clinical diagnosis. Primary Antibodies are guaranteed for 1 year from date of receipt.

For more information on our 100% guarantee, please visit www.novusbio.com/guarantee

Earn gift cards/discounts by submitting a review: www.novusbio.com/reviews/submit/NB100-2842

Earn gift cards/discounts by submitting a publication using this product:
www.novusbio.com/publications



