

Product Datasheet

Cholecystokinin-B R/CCKBR Antibody NB100-2803

Unit Size: 0.1 mg

Store at -20C. Avoid freeze-thaw cycles.

www.novusbio.com



technical@novusbio.com

Publications: 2

Protocols, Publications, Related Products, Reviews, Research Tools and Images at:
www.novusbio.com/NB100-2803

Updated 10/23/2024 v.20.1

Earn rewards for product
reviews and publications.

Submit a publication at www.novusbio.com/publications

Submit a review at www.novusbio.com/reviews/destination/NB100-2803



NB100-2803**Cholecystokinin-B R/CCKBR Antibody**

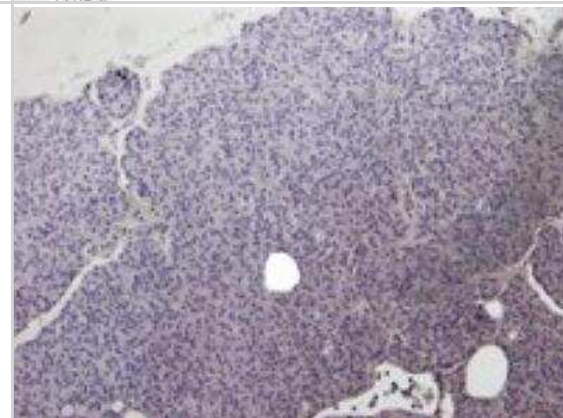
Product Information	
Unit Size	0.1 mg
Concentration	0.5 mg/ml
Storage	Store at -20C. Avoid freeze-thaw cycles.
Clonality	Polyclonal
Preservative	0.02% Sodium Azide
Isotype	IgG
Purity	Immunogen affinity purified
Buffer	Tris saline (20 mM Tris pH 7.3, 150 mM NaCl), 0.5% BSA
Target Molecular Weight	48 kDa
Product Description	
Host	Goat
Gene ID	887
Gene Symbol	CCKBR
Species	Human, Mouse, Rat
Immunogen	Peptide with sequence C-FDGDSDSQSQRVRNQ corresponding to internal region according to NP_795344.1.
Product Application Details	
Applications	Western Blot, Immunohistochemistry, Immunohistochemistry-Paraffin, Peptide ELISA
Recommended Dilutions	Western Blot 0.3 - 1 ug/ml, Immunohistochemistry 4-6 ug/ml, Immunohistochemistry-Paraffin 4-6 ug/ml, Peptide ELISA Detection limit 1:32000
Application Notes	WB: Approx 48-50kDa band observed in Mouse Pancreas lysates (calculated MW of 49.2kDa according to Mouse NP_031653.1). Primary incubation 1 hour at room temperature. IHC-P: Human pancreas shows staining of the islets of langerhans.

Images

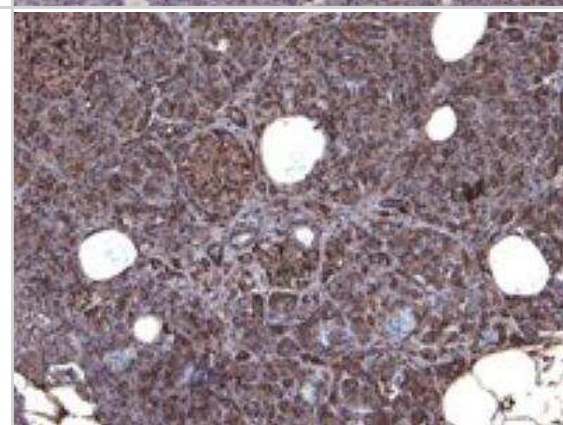
Western Blot: Cholecystokinin-B R/CCKBR Antibody [NB100-2803] - (0.5ug/ml) staining of Mouse Pancreas lysate (35ug protein in RIPA buffer). Detected by chemiluminescence.

250kDa
150kDa
100kDa
75kDa
50kDa
37kDa
25kDa
20kDa
15kDa

Immunohistochemistry: Cholecystokinin-B R/CCKBR Antibody [NB100-2803] - Negative Control showing staining of paraffin embedded Human Pancreas, with no primary antibody.



Immunohistochemistry: Cholecystokinin-B R/CCKBR Antibody [NB100-2803] - (6ug/ml) staining of paraffin embedded Human Pancreas. Heat induced antigen retrieval with citrate buffer pH 6, HRP-staining.



Publications

Olszewska-Pazdrak B, Townsend CM Jr, Hellmich MR. Agonist-independent activation of Src tyrosine kinase by a cholecystokinin-2 (CCK2) receptor splice variant. *J Biol Chem* 2004-09-24 [PMID: 15292208]

Berna MJ, Seiz O, Nast JF et al. CCK1 and CCK2 receptors are expressed on pancreatic stellate cells and induce collagen production. *J Biol Chem* 2010-12-01 [PMID: 20843811]



Novus Biologicals USA

10730 E. Briarwood Avenue
Centennial, CO 80112
USA
Phone: 303.730.1950
Toll Free: 1.888.506.6887
Fax: 303.730.1966
nb-customerservice@bio-techne.com

Bio-Techne Canada

21 Canmotor Ave
Toronto, ON M8Z 4E6
Canada
Phone: 905.827.6400
Toll Free: 855.668.8722
Fax: 905.827.6402
canada.inquires@bio-techne.com

Bio-Techne Ltd

19 Barton Lane
Abingdon Science Park
Abingdon, OX14 3NB, United Kingdom
Phone: (44) (0) 1235 529449
Free Phone: 0800 37 34 15
Fax: (44) (0) 1235 533420
info.EMEA@bio-techne.com

General Contact Information

www.novusbio.com
Technical Support: nb-technical@bio-techne.com
Orders: nb-customerservice@bio-techne.com
General: novus@novusbio.com

Products Related to NB100-2803

HAF017	Rabbit anti-Goat IgG Secondary Antibody [HRP (Horseradish Peroxidase)]
HAF109	Donkey anti-Goat IgG Secondary Antibody [HRP (Horseradish Peroxidase)]
NB410-28088-1mg	Goat IgG Isotype Control
H00000887-Q01-10ug	Recombinant Human Cholecystokinin-B R/CCKBR GST (N-Term) Protein

Limitations

This product is for research use only and is not approved for use in humans or in clinical diagnosis. Primary Antibodies are guaranteed for 1 year from date of receipt.

For more information on our 100% guarantee, please visit www.novusbio.com/guarantee

Earn gift cards/discounts by submitting a review: www.novusbio.com/reviews/submit/NB100-2803

Earn gift cards/discounts by submitting a publication using this product:
www.novusbio.com/publications



