

# Product Datasheet

## Aurora A Antibody - BSA Free NB100-267

Unit Size: 100 ul

Store at 4C. Do not freeze.

[www.novusbio.com](http://www.novusbio.com)



[technical@novusbio.com](mailto:technical@novusbio.com)

### Publications: 8

Protocols, Publications, Related Products, Reviews, Research Tools and Images at:  
[www.novusbio.com/NB100-267](http://www.novusbio.com/NB100-267)

Updated 2/21/2025 v.20.1

Earn rewards for product  
reviews and publications.

Submit a publication at [www.novusbio.com/publications](http://www.novusbio.com/publications)

Submit a review at [www.novusbio.com/reviews/destination/NB100-267](http://www.novusbio.com/reviews/destination/NB100-267)



**NB100-267**

Aurora A Antibody - BSA Free

Product Information	
Unit Size	100 ul
Concentration	1.0 mg/ml
Storage	Store at 4C. Do not freeze.
Clonality	Polyclonal
Preservative	0.09% Sodium Azide
Isotype	IgG
Purity	Immunogen affinity purified
Buffer	Tris-Citrate/Phosphate (pH 7.0 - 8.0)
Target Molecular Weight	46 kDa

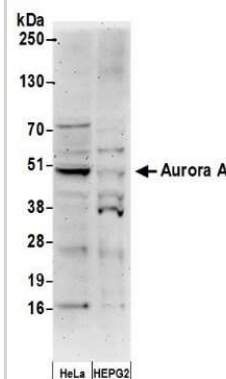
Product Description	
Host	Rabbit
Gene ID	6790
Gene Symbol	AURKA
Species	Human
Marker	Mitosis Marker
Specificity/Sensitivity	This is specific for human STK15, Serine/Threonine Kinase 15, Aurora 2, BRAK, ARK1, Aurora-Related Kinase 1
Immunogen	The immunogen recognized by this antibody maps to a region between residues 75 and 125 of human Aurora A Kinase using the numbering given in entry NP_003591.2 (GeneID 6790).

Product Application Details	
Applications	Western Blot, Immunoprecipitation
Recommended Dilutions	Western Blot 1:2000-1:10000, Immunoprecipitation 2-5 ug/mg lysate

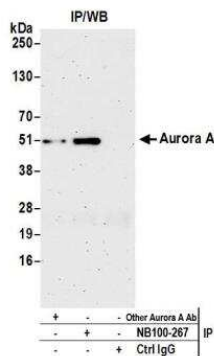


## Images

**Western Blot: Aurora A Antibody [NB100-267]** - Samples: Whole cell lysate (50 ug) from HeLa and HEPG2 cells prepared using NETN lysis buffer. Antibody: Affinity purified rabbit anti-Aurora A antibody used for WB at 0.2 ug/ml. Detection: Chemiluminescence with an exposure time of 3 minutes.



**Immunoprecipitation: Aurora A Antibody [NB100-267]** - Detection of human Aurora A by western blot of immunoprecipitates. Samples: Whole cell lysate (1.0 mg per IP reaction; 20% of IP loaded) from HeLa cells prepared using NETN lysis buffer. Antibodies: Affinity purified rabbit anti-Aurora A antibody NB100-267 used for IP at 3 ug per reaction. Aurora A was also immunoprecipitated by another rabbit anti-Aurora A antibody. For blotting immunoprecipitated Aurora A, NB100-267 was used at 1 ug/ml. Detection: Chemiluminescence with an exposure time of 3 minutes.



## Publications

Ana G, Bernardo O, Marco N et al. Micronuclei from misaligned chromosomes that satisfy the spindle assembly checkpoint in cancer cells. *Curr Biol.* 2022-08-27 [PMID: 36057259]

Drpic Danica, Almeida Ana C, Aguiar Paulo et al. Chromosome Segregation Is Biased by Kinetochore Size. *Current Biology* : Cb 2018-01-01 [PMID: 29706521]

Almeida AC, Soares-de-Oliveira J, Drpic D et al. Augmin-dependent microtubule self-organization drives kinetochore fiber maturation in mammals *Cell reports* 2022-04-05 [PMID: 35385739]

Ma N, Matsunaga S, Morimoto A et al. The nuclear scaffold protein SAF-A is required for kinetochore-microtubule attachment and contributes to the targeting of Aurora-A to mitotic spindles. *J Cell Sci* 2011-02-01 [PMID: 21242313]

Liu L, Guo C, Dammann R et al. RASSF1A interacts with and activates the mitotic kinase Aurora-A. *Oncogene* 2008-10-01 [PMID: 18641684]

Irelan JT, Murphy TJ, DeJesus PD et al. A role for IkkappaB kinase 2 in bipolar spindle assembly. *Proc Natl Acad Sci U S A* 2007-10-01 [PMID: 17939994]

Landen CN Jr, Lin YG, Immaneni A et al. Overexpression of the centrosomal protein Aurora-A kinase is associated with poor prognosis in epithelial ovarian cancer patients. *Clin Cancer Res* 2007-07-01 [PMID: 17634535]

Hontz AE, Li SA, Lingle WL et al. Aurora a and B overexpression and centrosome amplification in early estrogen-induced tumor foci in the Syrian hamster kidney: implications for chromosomal instability, aneuploidy, and neoplasia. *Cancer Res* 2007-04-01 [PMID: 17409401]



### **Novus Biologicals USA**

10730 E. Briarwood Avenue  
Centennial, CO 80112  
USA  
Phone: 303.730.1950  
Toll Free: 1.888.506.6887  
Fax: 303.730.1966  
nb-customerservice@bio-techne.com

### **Bio-Techne Canada**

21 Canmotor Ave  
Toronto, ON M8Z 4E6  
Canada  
Phone: 905.827.6400  
Toll Free: 855.668.8722  
Fax: 905.827.6402  
canada.inquires@bio-techne.com

### **Bio-Techne Ltd**

19 Barton Lane  
Abingdon Science Park  
Abingdon, OX14 3NB, United Kingdom  
Phone: (44) (0) 1235 529449  
Free Phone: 0800 37 34 15  
Fax: (44) (0) 1235 533420  
info.EMEA@bio-techne.com

### **General Contact Information**

www.novusbio.com  
Technical Support: nb-technical@bio-techne.com  
Orders: nb-customerservice@bio-techne.com  
General: novus@novusbio.com

### **Products Related to NB100-267**

---

NBL1-07855	Aurora A Overexpression Lysate
HAF008	Goat anti-Rabbit IgG Secondary Antibody [HRP]
NB7160	Goat anti-Rabbit IgG (H+L) Secondary Antibody [HRP]
NBP2-24891	Rabbit IgG Isotype Control

---

### **Limitations**

This product is for research use only and is not approved for use in humans or in clinical diagnosis. Primary Antibodies are guaranteed for 1 year from date of receipt.

For more information on our 100% guarantee, please visit [www.novusbio.com/guarantee](http://www.novusbio.com/guarantee)

Earn gift cards/discounts by submitting a review: [www.novusbio.com/reviews/submit/NB100-267](http://www.novusbio.com/reviews/submit/NB100-267)

Earn gift cards/discounts by submitting a publication using this product:  
[www.novusbio.com/publications](http://www.novusbio.com/publications)

