

Product Datasheet

SAFB Antibody NB100-2593

Unit Size: 0.1 ml

Store at 4C. Do not freeze.

www.novusbio.com



technical@novusbio.com

Protocols, Publications, Related Products, Reviews, Research Tools and Images at:
www.novusbio.com/NB100-2593

Updated 10/23/2024 v.20.1

Earn rewards for product
reviews and publications.

Submit a publication at www.novusbio.com/publications

Submit a review at www.novusbio.com/reviews/destination/NB100-2593



NB100-2593

SAFB Antibody

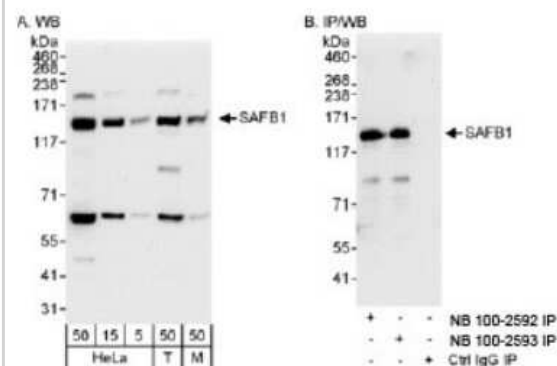
Product Information	
Unit Size	0.1 ml
Concentration	0.2 mg/ml
Storage	Store at 4C. Do not freeze.
Clonality	Polyclonal
Preservative	0.09% Sodium Azide
Isotype	IgG
Purity	Immunogen affinity purified
Buffer	TBS and 0.1% BSA

Product Description	
Host	Rabbit
Gene ID	6294
Gene Symbol	SAFB
Species	Human, Mouse
Immunogen	The immunogen recognized by this antibody maps to a region between residue 875 and the C-terminus (residue 915) of human Scaffold Attachment Factor B using the numbering given in entry NP_002958.2 (GeneID 6294).

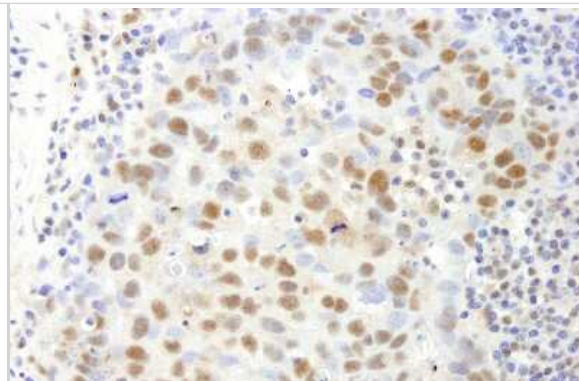
Product Application Details	
Applications	Western Blot, Immunohistochemistry, Immunohistochemistry-Paraffin, Immunoprecipitation
Recommended Dilutions	Western Blot 1:2000-1:10000, Immunohistochemistry 1:10-1:500, Immunoprecipitation 2-5 ug/mg lysate, Immunohistochemistry-Paraffin 1:10-1:500

Images

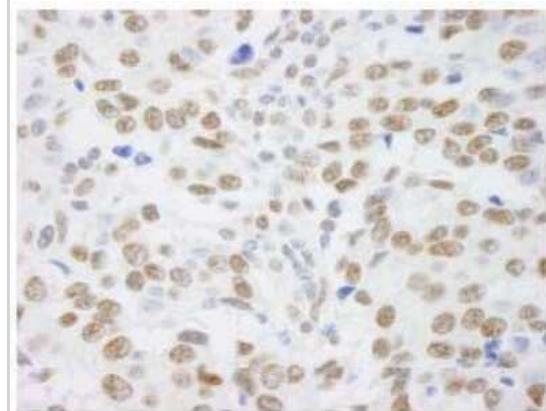
Western Blot: SAFB Antibody [NB100-2593] - Detection of Human and Mouse SAFB1 on HeLa whole cell lysate using NB100-2593. SAFB1 was also immunoprecipitated by rabbit anti-SAFB1 antibody NB100-2592.



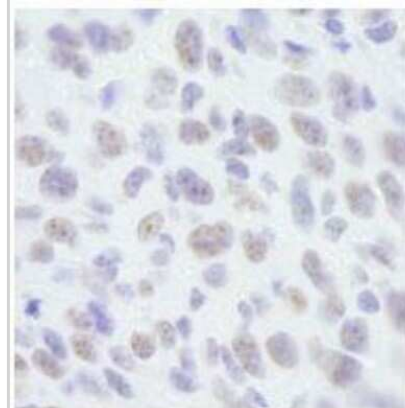
Immunohistochemistry: SAFB Antibody [NB100-2593] - Sample: FFPE section of human breast carcinoma. Antibody: Affinity purified rabbit anti-SAFB1 used at a dilution of 1:200 (1ug/ml). Detection: DAB



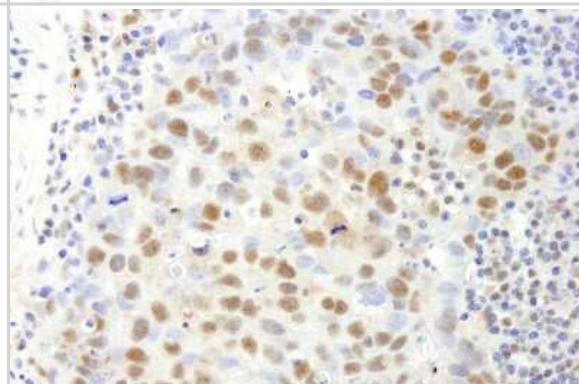
Immunohistochemistry-Paraffin: SAFB Antibody [NB100-2593] - FFPE section of human breast adenocarcinoma. Affinity purified rabbit anti-SAFB1 used at a dilution of 1:250.



Immunohistochemistry-Paraffin: SAFB Antibody [NB100-2593] - FFPE section of mouse squamous cell carcinoma. Affinity purified rabbit anti-SAFB1 used at a dilution of 1:250.



Immunohistochemistry: SAFB Antibody [NB100-2593] - Sample: FFPE section of human breast carcinoma. Antibody: Affinity purified rabbit anti-SAFB1 used at a dilution of 1:200 (1ug/ml). Detection: DAB





Novus Biologicals USA

10730 E. Briarwood Avenue
Centennial, CO 80112
USA
Phone: 303.730.1950
Toll Free: 1.888.506.6887
Fax: 303.730.1966
nb-customerservice@bio-techne.com

Bio-Techne Canada

21 Canmotor Ave
Toronto, ON M8Z 4E6
Canada
Phone: 905.827.6400
Toll Free: 855.668.8722
Fax: 905.827.6402
canada.inquires@bio-techne.com

Bio-Techne Ltd

19 Barton Lane
Abingdon Science Park
Abingdon, OX14 3NB, United Kingdom
Phone: (44) (0) 1235 529449
Free Phone: 0800 37 34 15
Fax: (44) (0) 1235 533420
info.EMEA@bio-techne.com

General Contact Information

www.novusbio.com
Technical Support: nb-technical@bio-techne.com
Orders: nb-customerservice@bio-techne.com
General: novus@novusbio.com

Products Related to NB100-2593

HAF008	Goat anti-Rabbit IgG Secondary Antibody [HRP]
NB7160	Goat anti-Rabbit IgG (H+L) Secondary Antibody [HRP]
NBP2-24891	Rabbit IgG Isotype Control
H00006294-Q01-10ug	Recombinant Human SAFB GST (N-Term) Protein

Limitations

This product is for research use only and is not approved for use in humans or in clinical diagnosis. Primary Antibodies are guaranteed for 1 year from date of receipt.

For more information on our 100% guarantee, please visit www.novusbio.com/guarantee

Earn gift cards/discounts by submitting a review: www.novusbio.com/reviews/submit/NB100-2593

Earn gift cards/discounts by submitting a publication using this product:
www.novusbio.com/publications

