

Product Datasheet

Claspin Antibody - BSA Free

NB100-247

Unit Size: 100 ul

Store at 4C. Do not freeze.

www.novusbio.com



technical@novusbio.com

Publications: 13

Protocols, Publications, Related Products, Reviews, Research Tools and Images at:
www.novusbio.com/NB100-247

Updated 2/21/2025 v.20.1

Earn rewards for product
reviews and publications.

Submit a publication at www.novusbio.com/publications

Submit a review at www.novusbio.com/reviews/destination/NB100-247



NB100-247

Claspin Antibody - BSA Free

Product Information	
Unit Size	100 ul
Concentration	1.0 mg/ml
Storage	Store at 4C. Do not freeze.
Clonality	Polyclonal
Preservative	0.09% Sodium Azide
Isotype	IgG
Purity	Immunogen affinity purified
Buffer	Tris-Citrate/Phosphate (pH 7.0 - 8.0)

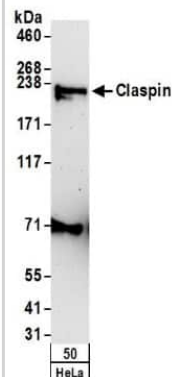
Product Description	
Host	Rabbit
Gene ID	63967
Gene Symbol	CLSPN
Species	Human
Reactivity Notes	Gorilla (100%).
Immunogen	The immunogen recognized by this antibody maps to a region between residues 450 and 500 of human Claspin using the numbering given in entry AAG24515.1 (GeneID 63967).

Product Application Details	
Applications	Western Blot, Immunohistochemistry, Immunohistochemistry-Paraffin, Immunoprecipitation
Recommended Dilutions	Western Blot 1:5000-1:20000, Immunohistochemistry 1:500 - 1:2000, Immunoprecipitation 1 - 5 ug/mg lysate, Immunohistochemistry-Paraffin 1:500 - 1:2000
Application Notes	Epitope retrieval with citrate buffer pH6.0 is recommended for FFPE tissue sections.

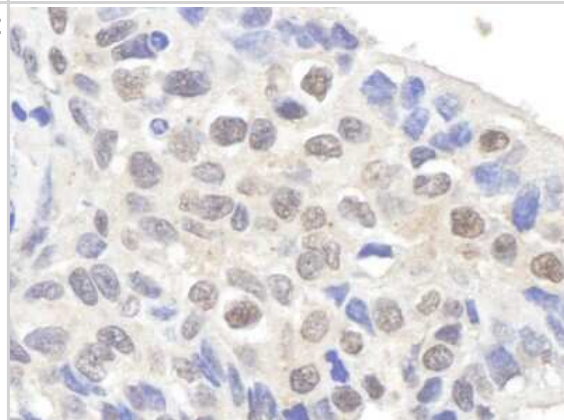


Images

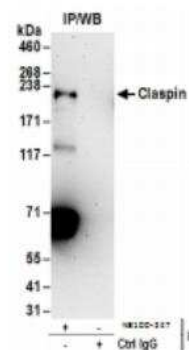
Western Blot: Claspin Antibody [NB100-247] - Detection of Human Claspin by Western Blot. Samples: Whole cell lysate (50 ug) from HeLa cells. Antibodies: Affinity purified rabbit anti-Claspin antibody NB100-247 used for WB at 1 ug/ml. Detection: Chemiluminescence with an exposure time of 3 minutes.



Immunohistochemistry-Paraffin: Claspin Antibody [NB100-247] - Sample: FFPE section of human lung carcinoma. Antibody: Affinity purified rabbit anti-Claspin used at a dilution of 1:1,000 (1ug/ml). Detection: DAB



Immunoprecipitation: Claspin Antibody [NB100-247] - Whole cell lysate (1 mg for IP; 20% of IP loaded) from HeLa cells. Antibodies: Affinity purified rabbit anti-Claspin antibody used for IP at 6 ug/mg lysate. For blotting immunoprecipitated Claspin, was used at 1 ug/ml. Detection: Chemiluminescence with an exposure time of 3 minutes.



Publications

Doldi V, Lecchi M, Ljevar S et al. Potential of the Stromal Matricellular Protein Periostin as a Biomarker to Improve Risk Assessment in Prostate Cancer International journal of molecular sciences 2022-07-20 [PMID: 35887333]

Buchsbaum S, Morris C, Bochar V, Jalinot P. Human INT6 interacts with MCM7 and regulates its stability during S phase of the cell cycle. Oncogene 2007-08-02 [PMID: 17310990] (Human)

Speroni J, Federico MB, Mansilla SF et al. Kinase-independent function of checkpoint kinase 1 (Chk1) in the replication of damaged DNA. Proc Natl Acad Sci U S A 2012-05-01 [PMID: 22529391]

Guervilly JH, Renaud E, Takata M et al. USP1 deubiquitinase maintains phosphorylated CHK1 by limiting its DDB1-dependent degradation. Hum Mol Genet 2011-06-01 [PMID: 21389083]

Despras E, Daboussi F, Hyrien O et al. ATR/Chk1 pathway is essential for resumption of DNA synthesis and cell survival in UV-irradiated XP variant cells. Hum Mol Genet 2010-05-01 [PMID: 20123862]

Yang XH, Shiotani B, Classon M et al. Chk1 and Claspin potentiate PCNA ubiquitination. Genes Dev 2008-05-01 [PMID: 18451105]

Guervilly JH, Mace-Aime G, Rosselli F et al. Loss of CHK1 function impedes DNA damage-induced FANCD2 monoubiquitination but normalizes the abnormal G2 arrest in Fanconi anemia. Hum Mol Genet 2008-03-01 [PMID: 18029388]

Wang X, Zou L, Lu T et al. Rad17 phosphorylation is required for claspin recruitment and Chk1 activation in response to replication stress. Mol Cell 2006-08-01 [PMID: 16885023]

MailN, Bekker-Jensen S, Bartek J et al. Destruction of Claspin by SCFbetaTrCP restrains Chk1 activation and facilitates recovery from genotoxic stress. Mol Cell 2006-08-01 [PMID: 16885021]

Bennett LN, Clarke PR. Regulation of Claspin degradation by the ubiquitin-proteasome pathway during the cell cycle and in response to ATR-dependent checkpoint activation. FEBS Lett 2006-07-01 [PMID: 16828751]

Clarke CA, Bennett LN, Clarke PR et al. Cleavage of claspin by caspase-7 during apoptosis inhibits the Chk1 pathway. J Biol Chem 2005-10-01 [PMID: 16123041]

Ge Li, RT et al. Phosphatase type 2A-dependent -independent pathways for ATR phosphorylation of Chk1. J Biol Chem 282(10): 7287-7298. 2007-01-01 [PMID: 17210576]

More publications at <http://www.novusbio.com/NB100-247>



Novus Biologicals USA

10730 E. Briarwood Avenue
Centennial, CO 80112
USA
Phone: 303.730.1950
Toll Free: 1.888.506.6887
Fax: 303.730.1966
nb-customerservice@bio-techne.com

Bio-Techne Canada

21 Canmotor Ave
Toronto, ON M8Z 4E6
Canada
Phone: 905.827.6400
Toll Free: 855.668.8722
Fax: 905.827.6402
canada.inquires@bio-techne.com

Bio-Techne Ltd

19 Barton Lane
Abingdon Science Park
Abingdon, OX14 3NB, United Kingdom
Phone: (44) (0) 1235 529449
Free Phone: 0800 37 34 15
Fax: (44) (0) 1235 533420
info.EMEA@bio-techne.com

General Contact Information

www.novusbio.com
Technical Support: nb-technical@bio-techne.com
Orders: nb-customerservice@bio-techne.com
General: novus@novusbio.com

Products Related to NB100-247

NB800-PC1	HeLa Whole Cell Lysate
HAF008	Goat anti-Rabbit IgG Secondary Antibody [HRP]
NB7160	Goat anti-Rabbit IgG (H+L) Secondary Antibody [HRP]
NBP2-24891	Rabbit IgG Isotype Control

Limitations

This product is for research use only and is not approved for use in humans or in clinical diagnosis. Primary Antibodies are guaranteed for 1 year from date of receipt.

For more information on our 100% guarantee, please visit www.novusbio.com/guarantee

Earn gift cards/discounts by submitting a review: www.novusbio.com/reviews/submit/NB100-247

Earn gift cards/discounts by submitting a publication using this product:
www.novusbio.com/publications

