

Product Datasheet

Indoleamine 2,3-dioxygenase/IDO Antibody NB100-2459

Unit Size: 0.1 mg

Store at -20C. Avoid freeze-thaw cycles.

www.novusbio.com



technical@novusbio.com

Publications: 1

Protocols, Publications, Related Products, Reviews, Research Tools and Images at:
www.novusbio.com/NB100-2459

Updated 10/23/2024 v.20.1

Earn rewards for product
reviews and publications.

Submit a publication at www.novusbio.com/publications

Submit a review at www.novusbio.com/reviews/destination/NB100-2459



NB100-2459**Indoleamine 2,3-dioxygenase/IDO Antibody**

Product Information	
Unit Size	0.1 mg
Concentration	0.5 mg/ml
Storage	Store at -20C. Avoid freeze-thaw cycles.
Clonality	Polyclonal
Preservative	0.02% Sodium Azide
Isotype	IgG
Purity	Immunogen affinity purified
Buffer	Tris saline (20 mM Tris pH 7.3, 150 mM NaCl), 0.5% BSA

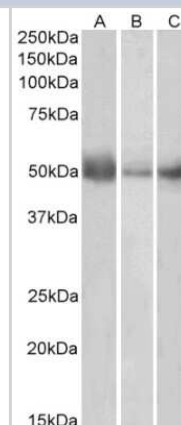
Product Description	
Host	Goat
Gene ID	3620
Gene Symbol	IDO1
Species	Human
Immunogen	Peptide with sequence CVLANWKKKDPNK corresponding to internal region according to NP_002155.1.

Product Application Details	
Applications	Western Blot, Immunohistochemistry, Immunohistochemistry-Paraffin, Peptide ELISA
Recommended Dilutions	Western Blot 0.5 - 1.5 ug/ml, Immunohistochemistry 4 - 6 ug/ml, Immunohistochemistry-Paraffin 4-6 ug/ml, Peptide ELISA detection limit 1:8000
Application Notes	Western blot: Approx 50kDa band observed in Human Lymph Node, Spleen and Placenta lysates (calculated MW of 45.3kDa according to NP_002155.1). Primary incubation was 1 hour. Preliminary testing was unsuccessful on Mouse and Rat for this particular batch. IHC-P: Human colon shows textured staining in the cytoplasm of absorptive cells. Data obtained from a previous batch (different goat).

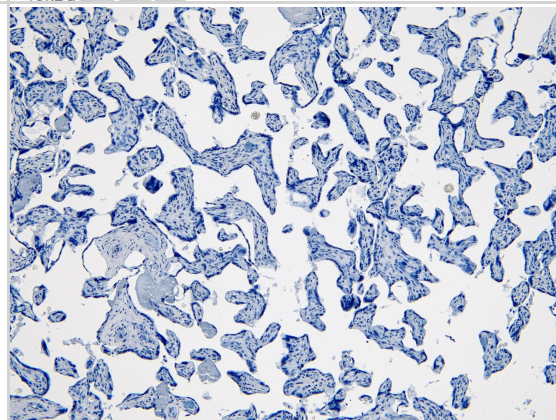


Images

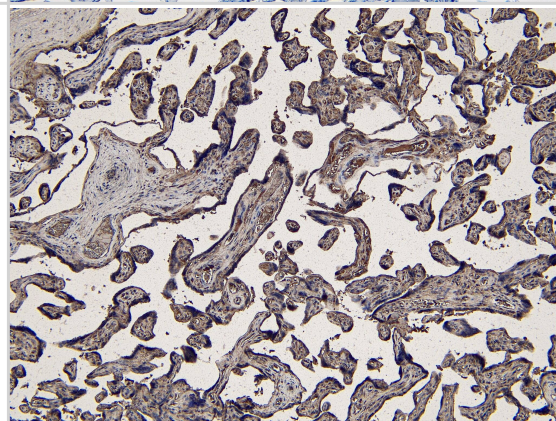
Western Blot: Indoleamine 2,3-dioxygenase/IDO Antibody [NB100-2459] - (0.5ug/ml) staining of Human Lymph Node (A), Spleen (B) and Placenta (C) lysates (35ug protein in RIPA buffer). Detected by chemiluminescence.



Immunohistochemistry-Paraffin: Indoleamine 2,3-dioxygenase/IDO Antibody [NB100-2459] - Negative Control showing staining of paraffin embedded Human Placenta, with no primary antibody.



Immunohistochemistry-Paraffin: Indoleamine 2,3-dioxygenase/IDO Antibody [NB100-2459] - (6ug/ml) staining of paraffin embedded Human Placenta. Heat induced antigen retrieval with citrate buffer pH 6, HRP-staining.



Publications

Munn DH, Sharma MD, Baban B et al. GCN2 kinase in T cells mediates proliferative arrest and anergy induction in response to indoleamine 2,3-dioxygenase. *Immunity* 2005-05-01 [PMID: 15894280]



Novus Biologicals USA

10730 E. Briarwood Avenue
Centennial, CO 80112
USA
Phone: 303.730.1950
Toll Free: 1.888.506.6887
Fax: 303.730.1966
nb-customerservice@bio-techne.com

Bio-Techne Canada

21 Canmotor Ave
Toronto, ON M8Z 4E6
Canada
Phone: 905.827.6400
Toll Free: 855.668.8722
Fax: 905.827.6402
canada.inquires@bio-techne.com

Bio-Techne Ltd

19 Barton Lane
Abingdon Science Park
Abingdon, OX14 3NB, United Kingdom
Phone: (44) (0) 1235 529449
Free Phone: 0800 37 34 15
Fax: (44) (0) 1235 533420
info.EMEA@bio-techne.com

General Contact Information

www.novusbio.com
Technical Support: nb-technical@bio-techne.com
Orders: nb-customerservice@bio-techne.com
General: novus@novusbio.com

Products Related to NB100-2459

NBL1-11988	Indoleamine 2,3-dioxygenase/IDO Overexpression Lysate
HAF017	Rabbit anti-Goat IgG Secondary Antibody [HRP (Horseradish Peroxidase)]
HAF109	Donkey anti-Goat IgG Secondary Antibody [HRP (Horseradish Peroxidase)]
NB410-28088-1mg	Goat IgG Isotype Control

Limitations

This product is for research use only and is not approved for use in humans or in clinical diagnosis. Primary Antibodies are guaranteed for 1 year from date of receipt.

For more information on our 100% guarantee, please visit www.novusbio.com/guarantee

Earn gift cards/discounts by submitting a review: www.novusbio.com/reviews/submit/NB100-2459

Earn gift cards/discounts by submitting a publication using this product:
www.novusbio.com/publications



