

Product Datasheet

GOLGA6 Antibody NB100-2436

Unit Size: 0.1 mg

Store at -20C. Avoid freeze-thaw cycles.

www.novusbio.com



technical@novusbio.com

Publications: 1

Protocols, Publications, Related Products, Reviews, Research Tools and Images at:
www.novusbio.com/NB100-2436

Updated 9/9/2025 v.20.1

Earn rewards for product
reviews and publications.

Submit a publication at www.novusbio.com/publications

Submit a review at www.novusbio.com/reviews/destination/NB100-2436



NB100-2436**GOLGA6 Antibody**

Product Information	
Unit Size	0.1 mg
Concentration	0.5 mg/ml
Storage	Store at -20C. Avoid freeze-thaw cycles.
Clonality	Polyclonal
Preservative	0.02% Sodium Azide
Isotype	IgG
Purity	Immunogen affinity purified
Buffer	Tris saline (20 mM Tris pH 7.3, 150 mM NaCl), 0.5% BSA

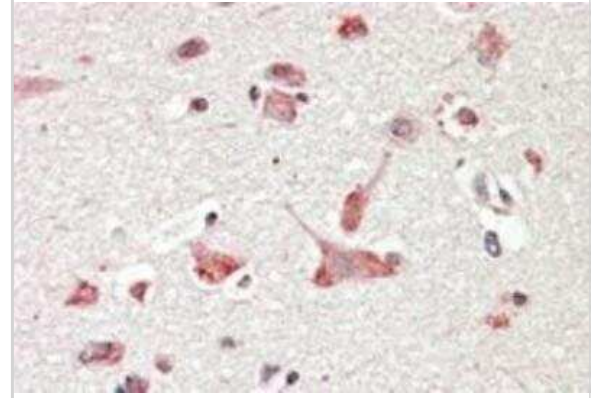
Product Description	
Description	Novus Biologicals Goat GOLGA6 Antibody (NB100-2436) is a polyclonal antibody validated for use in IHC, WB and ELISA. Anti-GOLGA6 Antibody: Cited in 1 publication. All Novus Biologicals antibodies are covered by our 100% guarantee.
Host	Goat
Gene ID	342096
Gene Symbol	GOLGA6A
Species	Human
Specificity/Sensitivity	GeneID 55889 may be a pseudogene, while GeneID 342096 is thought to encode a functional protein.
Immunogen	Peptide with sequence C-DLPKEKADGTEQ corresponding to internal region according to NP_061122.4, NP_001033729.1.

Product Application Details	
Applications	Western Blot, Immunohistochemistry-Paraffin, Immunohistochemistry, Peptide ELISA
Recommended Dilutions	Western Blot 1:100 - 1:2000, Immunohistochemistry 3 - 6 ug/ml, Immunohistochemistry-Paraffin 3 - 6 ug/ml, Peptide ELISA Detection limit 1:1000
Application Notes	WB: Preliminary experiments gave an approx. 45 kDa band in human liver lysates after 1 ug/ml antibody staining. Please note that currently we cannot find an explanation in the literature for the band we observe given the calculated size of 79.9 kDa band according to NP_001033729.1. The 45 kDa band was successfully blocked by incubation with the immunizing peptide. IHC-P: Human cerebral cortex shows localized cytoplasm staining consistent with Golgi.



Images

Immunohistochemistry-Paraffin: GOLGA6 Antibody [NB100-2436] - Paraffin embedded Human Cerebral Cortex. Steamed antigen retrieval with citrate buffer pH 6, AP-staining.



Publications

Gilles F, Goy A, Remache Y et al. Cloning and characterization of a Golgin-related gene from the large-scale polymorphism linked to the PML gene. Genomics 2000-12-15 [PMID: 11161787]



Novus Biologicals USA

10730 E. Briarwood Avenue
Centennial, CO 80112
USA
Phone: 303.730.1950
Toll Free: 1.888.506.6887
Fax: 303.730.1966
nb-customerservice@bio-techne.com

Bio-Techne Canada

21 Canmotor Ave
Toronto, ON M8Z 4E6
Canada
Phone: 905.827.6400
Toll Free: 855.668.8722
Fax: 905.827.6402
canada.inquires@bio-techne.com

Bio-Techne Ltd

19 Barton Lane
Abingdon Science Park
Abingdon, OX14 3NB, United Kingdom
Phone: (44) (0) 1235 529449
Free Phone: 0800 37 34 15
Fax: (44) (0) 1235 533420
info.EMEA@bio-techne.com

General Contact Information

www.novusbio.com
Technical Support: nb-technical@bio-techne.com
Orders: nb-customerservice@bio-techne.com
General: novus@novusbio.com

Products Related to NB100-2436

HAF017	Rabbit anti-Goat IgG Secondary Antibody [HRP (Horseradish Peroxidase)]
HAF109	Donkey anti-Goat IgG Secondary Antibody [HRP (Horseradish Peroxidase)]
NB410-28088-1mg	Goat IgG Isotype Control
NBP2-54716PEP	GOLGA6 Recombinant Protein Antigen

Limitations

This product is for research use only and is not approved for use in humans or in clinical diagnosis. Primary Antibodies are guaranteed for 1 year from date of receipt.

For more information on our 100% guarantee, please visit www.novusbio.com/guarantee

Earn gift cards/discounts by submitting a review: www.novusbio.com/reviews/submit/NB100-2436

Earn gift cards/discounts by submitting a publication using this product:
www.novusbio.com/publications



