

Product Datasheet

Glycophorin A Antibody NB100-2428

Unit Size: 0.1 mg

Store at -20C. Avoid freeze-thaw cycles.

www.novusbio.com



technical@novusbio.com

Publications: 3

Protocols, Publications, Related Products, Reviews, Research Tools and Images at:
www.novusbio.com/NB100-2428

Updated 10/23/2024 v.20.1

Earn rewards for product
reviews and publications.

Submit a publication at www.novusbio.com/publications

Submit a review at www.novusbio.com/reviews/destination/NB100-2428



NB100-2428**Glycophorin A Antibody**

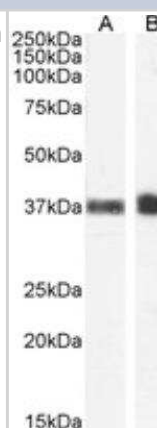
Product Information	
Unit Size	0.1 mg
Concentration	0.5 mg/ml
Storage	Store at -20C. Avoid freeze-thaw cycles.
Clonality	Polyclonal
Preservative	0.02% Sodium Azide
Isotype	IgG
Purity	Immunogen affinity purified
Buffer	Tris saline (20 mM Tris pH 7.3, 150 mM NaCl), 0.5% BSA
Target Molecular Weight	16 kDa

Product Description	
Host	Goat
Gene ID	2993
Gene Symbol	GYPA
Species	Human
Immunogen	Peptide with sequence C-SVEIENPETSQ corresponding to C-Terminus according to NP_002090.2.

Product Application Details	
Applications	Western Blot, Immunocytochemistry/ Immunofluorescence, Peptide ELISA
Recommended Dilutions	Western Blot 1 - 3 ug/mL, Immunocytochemistry/ Immunofluorescence, Peptide ELISA Detection limit 1:2000
Application Notes	WB: Approx. 18 kDa band observed in human liver lysates (calculated MW of 16.4 kDa band according to NP_002090.2). Use in ICC/IF was reported in scientific literature (PMID: 28210226).

Images

Western Blot: Glycophorin A Antibody [NB100-2428] - Staining of Human Peripheral Blood Monocytes (A) and Kidney (B) lysate (35 ug protein in RIPA buffer). Antibody at 1 ug/mL. Detected by chemiluminescence.



Publications

Asano K, Takahashi Y, Ueno M et al. Lack of human relevance for rat developmental toxicity of flumioxazin is revealed by comparative heme synthesis assay using embryonic erythroid cells derived from human and rat pluripotent stem cells *The Journal of toxicological sciences* [PMID: 35370240] (ICC/IF, Human)

Calabrese Giovanna, Forte Stefano, Gulino Rosario et al. Combination of Collagen-Based Scaffold and Bioactive Factors Induces Adipose-Derived Mesenchymal Stem Cells Chondrogenic Differentiation In vitro. *Frontiers in Physiology* 2017-02-02 [PMID: 28210226] (ICC/IF, Human)

Tolia NH, Enemark EJ, Sim BK, Joshua-Tor L. Structural Basis for the EBA-175 Erythrocyte Invasion Pathway of the Malaria Parasite *Plasmodium falciparum*. *Cell* 2005-07-29 [PMID: 16051144]





Novus Biologicals USA

10730 E. Briarwood Avenue
Centennial, CO 80112
USA
Phone: 303.730.1950
Toll Free: 1.888.506.6887
Fax: 303.730.1966
nb-customerservice@bio-techne.com

Bio-Techne Canada

21 Canmotor Ave
Toronto, ON M8Z 4E6
Canada
Phone: 905.827.6400
Toll Free: 855.668.8722
Fax: 905.827.6402
canada.inquires@bio-techne.com

Bio-Techne Ltd

19 Barton Lane
Abingdon Science Park
Abingdon, OX14 3NB, United Kingdom
Phone: (44) (0) 1235 529449
Free Phone: 0800 37 34 15
Fax: (44) (0) 1235 533420
info.EMEA@bio-techne.com

General Contact Information

www.novusbio.com
Technical Support: nb-technical@bio-techne.com
Orders: nb-customerservice@bio-techne.com
General: novus@novusbio.com

Products Related to NB100-2428

NB820-59232	Human Liver Whole Tissue Lysate (Adult Whole Normal)
HAF017	Rabbit anti-Goat IgG Secondary Antibody [HRP (Horseradish Peroxidase)]
HAF109	Donkey anti-Goat IgG Secondary Antibody [HRP (Horseradish Peroxidase)]
NB410-28088-1mg	Goat IgG Isotype Control

Limitations

This product is for research use only and is not approved for use in humans or in clinical diagnosis. Primary Antibodies are guaranteed for 1 year from date of receipt.

For more information on our 100% guarantee, please visit www.novusbio.com/guarantee

Earn gift cards/discounts by submitting a review: www.novusbio.com/reviews/submit/NB100-2428

Earn gift cards/discounts by submitting a publication using this product:
www.novusbio.com/publications



