

# Product Datasheet

## Cannabinoid R1/CB1/CNR1 Antibody NB100-2427

Unit Size: 0.1 mg

Store at -20C. Avoid freeze-thaw cycles.

[www.novusbio.com](http://www.novusbio.com)



[technical@novusbio.com](mailto:technical@novusbio.com)

### Publications: 4

Protocols, Publications, Related Products, Reviews, Research Tools and Images at:  
[www.novusbio.com/NB100-2427](http://www.novusbio.com/NB100-2427)

Updated 10/23/2024 v.20.1

Earn rewards for product  
reviews and publications.

Submit a publication at [www.novusbio.com/publications](http://www.novusbio.com/publications)

Submit a review at [www.novusbio.com/reviews/destination/NB100-2427](http://www.novusbio.com/reviews/destination/NB100-2427)



**NB100-2427****Cannabinoid R1/CB1/CNR1 Antibody****Product Information**

|                      |  |
|----------------------|--|
| <b>Unit Size</b>     | 0.1 mg   |
| <b>Concentration</b> | 0.5 mg/ml  |
| <b>Storage</b>       | Store at -20C. Avoid freeze-thaw cycles.               |
| <b>Clonality</b>     | Polyclonal   |
| <b>Preservative</b>  | 0.02% Sodium Azide                                     |
| <b>Isotype</b>       | IgG  |
| <b>Purity</b>        | Immunogen affinity purified                            |
| <b>Buffer</b>        | Tris saline (20 mM Tris pH 7.3, 150 mM NaCl), 0.5% BSA |

**Product Description**

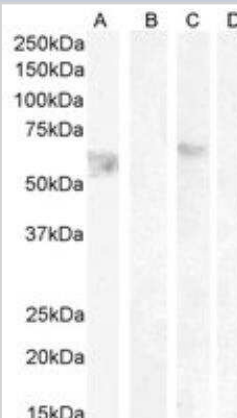
|                                |   |
|--------------------------------|---|
| <b>Host</b>                    | Goat  |
| <b>Gene ID</b>                 | 1268  |
| <b>Gene Symbol</b>             | CNR1  |
| <b>Species</b>                 | Mouse, Rat  |
| <b>Reactivity Notes</b>        | Mouse reactivity reported in scientific literature (PMID: 24291518).  |
| <b>Specificity/Sensitivity</b> | This antibody is expected to recognize both reported isoforms. Isoform a (NP_057167.2; NP_001153732.1; NP_001153731.1; NP_001153730.1; NP_001153698.1) and isoform b (NP_149421.1). |
| <b>Immunogen</b>               | Peptide with sequence C-HTSEDGKVQVTRPDQ corresponding to internal region according to NP_001153732.1, NP_001153731.1, NP_001153730.1, NP_001153698.1, NP_149421.1.                  |

**Product Application Details**

|                              |   |
|------------------------------|---|
| <b>Applications</b>          | Western Blot, Peptide ELISA   |
| <b>Recommended Dilutions</b> | Western Blot 0.5 - 2 ug/mL, Peptide ELISA Detection limit 1:32000   |
| <b>Application Notes</b>     | Western blot: Approx 55 kDa (non-glycosylated) and 65 kDa (glycosylated) bands observed in lysates of cell line HeLa (calculated MW of 52.9 kDa according to NP_057167.2;). Both bands were successfully blocked by incubation with the immunizing peptide, |

**Images**

Western Blot: Cannabinoid R1/CB1/CNR1 Antibody [NB100-2427] - Western blot analysis of HeLa lysate non-glycosylated (A) + peptide (B) with antibody at 1 ug/mL and HeLa lysate glycosylated (C) + peptide (D) with antibody at 0.5 ug/mL. 35 ug protein in RIPA buffer. Detected by chemiluminescence.



## Publications

Perdikaris P, Tsarouchi M, Fanarioti E et al. Long lasting effects of chronic WIN55,212-2 treatment on mesostriatal dopaminergic and cannabinoid systems in the rat brain. *Neuropharmacology* 2018-02-01 [PMID: 29113897]

Ledent C, Valverde O, Cossu G et al. Unresponsiveness to cannabinoids and reduced addictive effects of opiates in CB1 receptor knockout mice. *Science* 1999-01-15 [PMID: 9888857]

Mouton-Liger F, Sahun I, Collin T et al. Developmental molecular and functional cerebellar alterations induced by PCP4/PEP19 overexpression: Implications for Down syndrome. *Neurobiol Dis* 2014-03-01 [PMID: 24291518] (WB, Mouse)

Porcella A, Maxia C, Gessa GL et al. The human eye expresses high levels of CB1 cannabinoid receptor mRNA and protein. *Eur J Neurosci* 2000-03-01 [PMID: 10762343]





### **Novus Biologicals USA**

10730 E. Briarwood Avenue  
Centennial, CO 80112  
USA  
Phone: 303.730.1950  
Toll Free: 1.888.506.6887  
Fax: 303.730.1966  
nb-customerservice@bio-techne.com

### **Bio-Techne Canada**

21 Canmotor Ave  
Toronto, ON M8Z 4E6  
Canada  
Phone: 905.827.6400  
Toll Free: 855.668.8722  
Fax: 905.827.6402  
canada.inquires@bio-techne.com

### **Bio-Techne Ltd**

19 Barton Lane  
Abingdon Science Park  
Abingdon, OX14 3NB, United Kingdom  
Phone: (44) (0) 1235 529449  
Free Phone: 0800 37 34 15  
Fax: (44) (0) 1235 533420  
info.EMEA@bio-techne.com

### **General Contact Information**

[www.novusbio.com](http://www.novusbio.com)  
Technical Support: nb-technical@bio-techne.com  
Orders: nb-customerservice@bio-techne.com  
General: novus@novusbio.com

### **Products Related to NB100-2427**

---

|                 |  |
|-----------------|--|
| NB820-59177     | Human Brain Whole Tissue Lysate (Adult Whole Normal)                   |
| HAF017          | Rabbit anti-Goat IgG Secondary Antibody [HRP (Horseradish Peroxidase)] |
| HAF109          | Donkey anti-Goat IgG Secondary Antibody [HRP (Horseradish Peroxidase)] |
| NB410-28088-1mg | Goat IgG Isotype Control   |

---

### **Limitations**

This product is for research use only and is not approved for use in humans or in clinical diagnosis. Primary Antibodies are guaranteed for 1 year from date of receipt.

For more information on our 100% guarantee, please visit [www.novusbio.com/guarantee](http://www.novusbio.com/guarantee)

Earn gift cards/discounts by submitting a review: [www.novusbio.com/reviews/submit/NB100-2427](http://www.novusbio.com/reviews/submit/NB100-2427)

Earn gift cards/discounts by submitting a publication using this product:  
[www.novusbio.com/publications](http://www.novusbio.com/publications)



