

Product Datasheet

MCM2 [p Ser53] Antibody NB100-2339

Unit Size: 0.1 ml

Store at 4C. Do not freeze.

www.novusbio.com



technical@novusbio.com

Publications: 5

Protocols, Publications, Related Products, Reviews, Research Tools and Images at:
www.novusbio.com/NB100-2339

Updated 9/9/2025 v.20.1

Earn rewards for product
reviews and publications.

Submit a publication at www.novusbio.com/publications

Submit a review at www.novusbio.com/reviews/destination/NB100-2339



NB100-2339**MCM2 [p Ser53] Antibody****Product Information**

Unit Size	0.1 ml
Concentration	0.2 mg/ml
Storage	Store at 4C. Do not freeze.
Clonality	Polyclonal
Preservative	0.09% Sodium Azide
Isotype	IgG
Purity	Immunogen affinity purified
Buffer	TBS and 0.1% BSA

Product Description

Description	Novus Biologicals Rabbit MCM2 [p Ser53] Antibody (NB100-2339) is a polyclonal antibody validated for use in IHC and WB. Anti-MCM2 Antibody: Cited in 5 publications. All Novus Biologicals antibodies are covered by our 100% guarantee.
Host	Rabbit
Gene ID	4171
Gene Symbol	MCM2
Species	Human, Mouse
Immunogen	mmunogen was a synthetic phosphorylated peptide, which represented a portion of human minichromosomal maintenance deficient 2 surrounding Serine 53 according to the numbering given in entry NP_004517.2 (GeneID 4171).

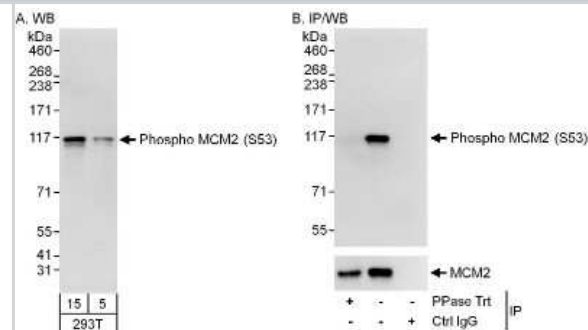
Product Application Details

Applications	Western Blot, Immunohistochemistry
Recommended Dilutions	Western Blot 1:1000-1:2500, Immunohistochemistry

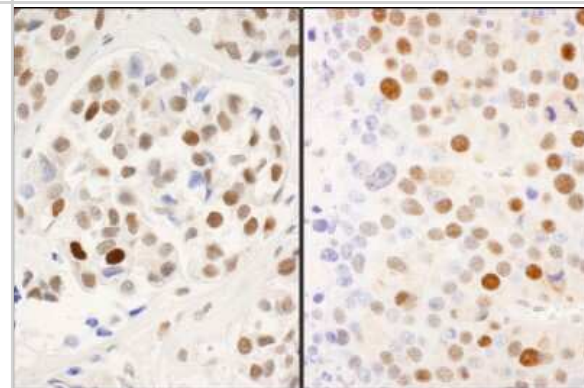


Images

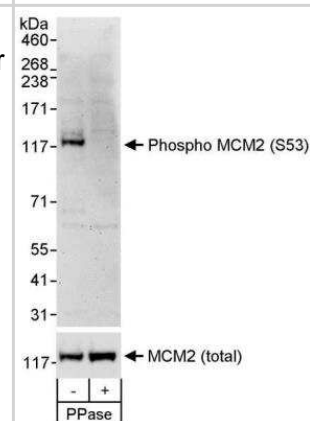
Western Blot: MCM2 [p Ser53] Antibody [NB100-2339] - Detection of Human Phospho MCM2 (S53) by Western Blot. Samples: Whole cell lysate (5 and 15 ug for WB; 1 mg for IP, 20% of IP loaded) from asynchronous 293T cells. For IP/WB, MCM2 was immunoprecipitated using A300-191A, which recognizes total MCM2. The immunoprecipitate was mock treated (-) or treated (+) with phosphatase (PPase). Antibody: Affinity purified rabbit anti-phospho MCM2 (S53) antibody NB100-2339 used at 0.1 ug/ml. To examine total MCM2, the membrane was stripped and blotted with A300-191A at 0.1 ug/ml. For blotting immunoprecipitated MCM2, the ReliaBLOT Reagents and Procedures were used. Detection: Chemiluminescence with exposure times of 10 seconds (A and B).



Immunohistochemistry: MCM2 [p Ser53] Antibody [NB100-2339] - Sample: FFPE sections of human breast carcinoma (left) and mouse renal cell carcinoma (right). Antibody: Affinity purified rabbit anti-fs18 phospho MCM2 (S53) fs20 used at a dilution of 1:200 (1ug/ml). Detection: DAB



Western Blot: MCM2 [p Ser53] Antibody [NB100-2339] - Whole cell lysate (50 ug) from asynchronous 293T cells that was mock treated (-) or treated (+) with phosphatases (PPase). Antibody used at 0.1 ug/ml. To examine total MCM2, the blot was stripped and then blotted with rabbit anti-MCM2 antibody at 0.1 ug/ml.



Publications

Kitamura R, Fukatsu R, Kakusho N et al. Molecular mechanism of activation of human Cdc7 kinase: bipartite interaction with Dbf4/activator of S phase kinase (ASK) activation subunit stimulates ATP binding and substrate recognition. *J Biol Chem*. 2011-07-01 [PMID: 21536671]

Rodriguez-Acebes S, Proctor I, Loddo M et al. Targeting DNA replication before it starts: Cdc7 as a therapeutic target in p53-mutant breast cancers. *Am J Pathol* 2010-10-01 [PMID: 20724597]

Hughes S, Jenkins V, Dar MJ et al. Transcriptional co-activator LEDGF interacts with Cdc7-activator of S-phase kinase (ASK) and stimulates its enzymatic activity. *J Biol Chem* 2010-01-01 [PMID: 19864417]

Cremona CA, Lloyd AC. Loss of anchorage in checkpoint-deficient cells increases genomic instability and promotes oncogenic transformation. *J Cell Sci* 2009-09-01 [PMID: 19690052]

Kulkarni AA, Kingsbury SR, Tudzarova S et al. Cdc7 kinase is a predictor of survival and a novel therapeutic target in epithelial ovarian carcinoma. *Clin Cancer Res* 2009-04-01 [PMID: 19318489]



Novus Biologicals USA

10730 E. Briarwood Avenue
Centennial, CO 80112
USA
Phone: 303.730.1950
Toll Free: 1.888.506.6887
Fax: 303.730.1966
nb-customerservice@bio-techne.com

Bio-Techne Canada

21 Canmotor Ave
Toronto, ON M8Z 4E6
Canada
Phone: 905.827.6400
Toll Free: 855.668.8722
Fax: 905.827.6402
canada.inquires@bio-techne.com

Bio-Techne Ltd

19 Barton Lane
Abingdon Science Park
Abingdon, OX14 3NB, United Kingdom
Phone: (44) (0) 1235 529449
Free Phone: 0800 37 34 15
Fax: (44) (0) 1235 533420
info.EMEA@bio-techne.com

General Contact Information

www.novusbio.com
Technical Support: nb-technical@bio-techne.com
Orders: nb-customerservice@bio-techne.com
General: novus@novusbio.com

Products Related to NB100-2339

NBL1-16771	TCF-12/HTF4 Overexpression Lysate
HAF008	Goat anti-Rabbit IgG Secondary Antibody [HRP]
NB7160	Goat anti-Rabbit IgG (H+L) Secondary Antibody [HRP]
NBP2-24891	Rabbit IgG Isotype Control

Limitations

This product is for research use only and is not approved for use in humans or in clinical diagnosis. Primary Antibodies are guaranteed for 1 year from date of receipt.

For more information on our 100% guarantee, please visit www.novusbio.com/guarantee

Earn gift cards/discounts by submitting a review: www.novusbio.com/reviews/submit/NB100-2339

Earn gift cards/discounts by submitting a publication using this product:
www.novusbio.com/publications

