

Product Datasheet

IRE1 alpha [p Ser724] Antibody [HRP] NB100-2323H

Unit Size: 0.1 ml

Store at 4C in the dark.

www.novusbio.com



technical@novusbio.com

Reviews: 1

Protocols, Publications, Related Products, Reviews, Research Tools and Images at:
www.novusbio.com/NB100-2323H

Updated 10/23/2024 v.20.1

Earn rewards for product
reviews and publications.

Submit a publication at www.novusbio.com/publications

Submit a review at www.novusbio.com/reviews/destination/NB100-2323H



NB100-2323H

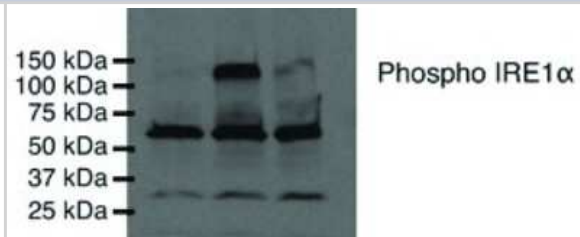
IRE1 alpha [p Ser724] Antibody [HRP]

Product Information	
Unit Size	0.1 ml
Concentration	Please see the vial label for concentration. If unlisted please contact technical services.
Storage	Store at 4C in the dark.
Clonality	Polyclonal
Preservative	No Preservative
Isotype	IgG
Conjugate	HRP
Purity	Immunogen affinity purified
Buffer	PBS
Product Description	
Host	Rabbit
Gene ID	2081
Gene Symbol	ERN1
Species	Human, Mouse, Rat, Porcine, Drosophila, Goat, Mammal, Monkey, Primate, Rabbit, Golden Syrian Hamster
Reactivity Notes	Use in Porcine reported in scientific literature (PMID:35492579).Drosophila reactivity reported in scientific literature (PMID: 31641108). Goat reactivity reported in scientific literature (PMID: 29046053). Use in Golden Syrian Hamster reported in scientific literature (PMID:31167774).
Specificity/Sensitivity	NB100-2323 IRE1 alpha [p Ser724] Antibody detects IRE-1 alpha when phosphorylated at Ser724 residue.
Immunogen	This IRE1 alpha [p Ser724] antibody was raised against a synthetic peptide surrounding the phosphorylated serine 724 of the human IRE1 alpha protein. [Swiss-Prot #O75460]
Product Application Details	
Applications	Western Blot, ELISA, Immunoblotting, Immunocytochemistry/ Immunofluorescence, Immunohistochemistry, Immunohistochemistry-Frozen, Immunohistochemistry-Paraffin, In vitro assay, Immunoprecipitation, Chromatin Immunoprecipitation (ChIP), Knockdown Validated
Recommended Dilutions	Western Blot, ELISA, Immunohistochemistry, Immunocytochemistry/ Immunofluorescence, Immunoprecipitation, Immunohistochemistry-Paraffin, Immunohistochemistry-Frozen, Immunoblotting, In vitro assay, Chromatin Immunoprecipitation (ChIP), Knockdown Validated
Application Notes	Optimal dilution of this antibody should be experimentally determined.



Images

Detection of phosphorylated IRE-1 alpha using NB100-2323. Lane 1: COS-7 untransfected Lane 2: COS-7 expressing wild-type IRE1 alpha Lane 3: COS-7 expressing kinase-dead IRE1 alpha.





Novus Biologicals USA

10730 E. Briarwood Avenue
Centennial, CO 80112
USA
Phone: 303.730.1950
Toll Free: 1.888.506.6887
Fax: 303.730.1966
nb-customerservice@bio-techne.com

Bio-Techne Canada

21 Canmotor Ave
Toronto, ON M8Z 4E6
Canada
Phone: 905.827.6400
Toll Free: 855.668.8722
Fax: 905.827.6402
canada.inquires@bio-techne.com

Bio-Techne Ltd

19 Barton Lane
Abingdon Science Park
Abingdon, OX14 3NB, United Kingdom
Phone: (44) (0) 1235 529449
Free Phone: 0800 37 34 15
Fax: (44) (0) 1235 533420
info.EMEA@bio-techne.com

General Contact Information

www.novusbio.com
Technical Support: nb-technical@bio-techne.com
Orders: nb-customerservice@bio-techne.com
General: novus@novusbio.com

Products Related to NB100-2323H

NBP2-24891H	Rabbit IgG Isotype Control [HRP]
NB100-2323R	IRE1 alpha [p Ser724] Antibody [DyLight 550]
NB100-2324PEP	IRE1 alpha Antibody Blocking Peptide
NBP2-50067	IRE1 alpha Antibody Pack

Limitations

This product is for research use only and is not approved for use in humans or in clinical diagnosis. Primary Antibodies are guaranteed for 1 year from date of receipt.

For more information on our 100% guarantee, please visit www.novusbio.com/guarantee

Earn gift cards/discounts by submitting a review: www.novusbio.com/reviews/submit/NB100-2323H

Earn gift cards/discounts by submitting a publication using this product:
www.novusbio.com/publications

