

Product Datasheet

EPLIN Antibody - BSA Free

NB100-2310

Unit Size: 100 ul

Store at 4C. Do not freeze.

www.novusbio.com



technical@novusbio.com

Publications: 1

Protocols, Publications, Related Products, Reviews, Research Tools and Images at:
www.novusbio.com/NB100-2310

Updated 2/21/2025 v.20.1

Earn rewards for product
reviews and publications.

Submit a publication at www.novusbio.com/publications

Submit a review at www.novusbio.com/reviews/destination/NB100-2310



NB100-2310

EPLIN Antibody - BSA Free

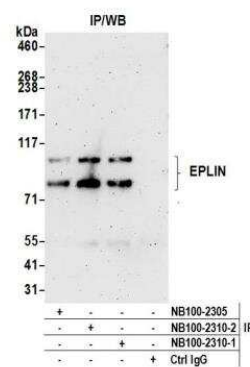
Product Information	
Unit Size	100 ul
Concentration	1.0 mg/ml
Storage	Store at 4C. Do not freeze.
Clonality	Polyclonal
Preservative	0.09% Sodium Azide
Isotype	IgG
Purity	Immunogen affinity purified
Buffer	Tris-Citrate/Phosphate (pH 7.0 - 8.0)
Target Molecular Weight	85 kDa

Product Description	
Host	Rabbit
Gene ID	51474
Gene Symbol	LIMA1
Species	Human
Immunogen	The immunogen recognized by this antibody maps to a region between residues 500 and 550 of human epithelial protein lost in neoplasm beta using the numbering given in entry NP_057441.1 (GeneID 51474).

Product Application Details	
Applications	Immunoprecipitation, Western Blot (Negative)
Recommended Dilutions	Immunoprecipitation 2-10 ug/mg lysate, Western Blot (Negative)
Application Notes	Not Recommended for Western Blot. Use rabbit anti-EPLIN antibody NB100-2305

Images

Immunoprecipitation: EPLIN Antibody [NB100-2310] - Detection of human EPLIN by western blot of immunoprecipitates. Samples: Whole cell lysate (0.5 or 1.0 mg per IP reaction; 20% of IP loaded) from HeLa cells prepared using NETN lysis buffer. Antibodies: Affinity purified rabbit anti-EPLIN antibody NB100-2310 (lot NB100-2310-2) used for IP at 6 ug per reaction. EPLIN was also immunoprecipitated by a previous lot of this antibody (lot NB100-2310-1) and rabbit anti-EPLIN antibody NB100-2305. Detection: Chemiluminescence with an exposure time of 3 minutes.

**Publications**

Zhang S, Wang X, Iqbal S et al. Epidermal growth factor promotes protein degradation of epithelial protein lost in neoplasm (EPLIN), a putative metastasis suppressor, during epithelial-mesenchymal transition J Biol Chem 2012-11-27 [PMID: 23188829] (IP, Human)



Novus Biologicals USA

10730 E. Briarwood Avenue
Centennial, CO 80112
USA
Phone: 303.730.1950
Toll Free: 1.888.506.6887
Fax: 303.730.1966
nb-customerservice@bio-techne.com

Bio-Techne Canada

21 Canmotor Ave
Toronto, ON M8Z 4E6
Canada
Phone: 905.827.6400
Toll Free: 855.668.8722
Fax: 905.827.6402
canada.inquires@bio-techne.com

Bio-Techne Ltd

19 Barton Lane
Abingdon Science Park
Abingdon, OX14 3NB, United Kingdom
Phone: (44) (0) 1235 529449
Free Phone: 0800 37 34 15
Fax: (44) (0) 1235 533420
info.EMEA@bio-techne.com

General Contact Information

www.novusbio.com
Technical Support: nb-technical@bio-techne.com
Orders: nb-customerservice@bio-techne.com
General: novus@novusbio.com

Products Related to NB100-2310

NBL1-12533	EPLIN Overexpression Lysate
HAF008	Goat anti-Rabbit IgG Secondary Antibody [HRP]
NB7160	Goat anti-Rabbit IgG (H+L) Secondary Antibody [HRP]
NBP2-24891	Rabbit IgG Isotype Control

Limitations

This product is for research use only and is not approved for use in humans or in clinical diagnosis. Primary Antibodies are guaranteed for 1 year from date of receipt.

For more information on our 100% guarantee, please visit www.novusbio.com/guarantee

Earn gift cards/discounts by submitting a review: www.novusbio.com/reviews/submit/NB100-2310

Earn gift cards/discounts by submitting a publication using this product:
www.novusbio.com/publications

