

# Product Datasheet

## **BMAL1 Antibody [Alexa Fluor® 647] NB100-2288AF647**

Unit Size: 0.1 ml

Store at 4C in the dark.

[www.novusbio.com](http://www.novusbio.com)



[technical@novusbio.com](mailto:technical@novusbio.com)

Protocols, Publications, Related Products, Reviews, Research Tools and Images at:  
[www.novusbio.com/NB100-2288AF647](http://www.novusbio.com/NB100-2288AF647)

Updated 10/23/2024 v.20.1

**Earn rewards for product  
reviews and publications.**

Submit a publication at [www.novusbio.com/publications](http://www.novusbio.com/publications)

Submit a review at [www.novusbio.com/reviews/destination/NB100-2288AF647](http://www.novusbio.com/reviews/destination/NB100-2288AF647)



**NB100-2288AF647**

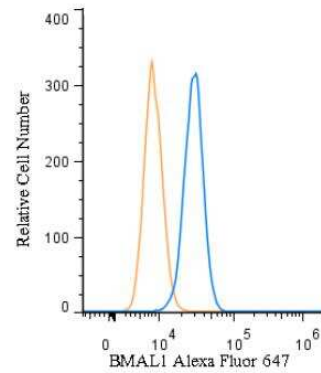
BMAL1 Antibody [Alexa Fluor® 647]

Product Information	
Unit Size	0.1 ml
Concentration	Please see the vial label for concentration. If unlisted please contact technical services.
Storage	Store at 4C in the dark.
Clonality	Polyclonal
Preservative	0.05% Sodium Azide
Isotype	IgG
Conjugate	Alexa Fluor 647
Purity	Immunogen affinity purified
Buffer	50mM Sodium Borate
Product Description	
Host	Rabbit
Gene ID	406
Gene Symbol	BMAL1
Species	Human, Mouse, Rat, Amphibian, Primate
Reactivity Notes	Mouse reactivity reported in scientific literature (PMID:32732906). Amphibian reactivity reported from a verified customer review.
Immunogen	Bacterially expressed human BMAL1 (amino acids 392-626). [UniProt# O00327].
Notes	Alexa Fluor (R) products are provided under an intellectual property license from Life Technologies Corporation. The purchase of this product conveys to the buyer the non-transferable right to use the purchased product and components of the product only in research conducted by the buyer (whether the buyer is an academic or for-profit entity). The sale of this product is expressly conditioned on the buyer not using the product or its components, or any materials made using the product or its components, in any activity to generate revenue, which may include, but is not limited to use of the product or its components: (i) in manufacturing; (ii) to provide a service, information, or data in return for payment; (iii) for therapeutic, diagnostic or prophylactic purposes; or (iv) for resale, regardless of whether they are resold for use in research. For information on purchasing a license to this product for purposes other than as described above, contact Life Technologies Corporation, 5791 Van Allen Way, Carlsbad, CA 92008 USA or outlicensing@lifetech.com. This conjugate is made on demand. Actual recovery may vary from the stated volume of this product. The volume will be greater than or equal to the unit size stated on the datasheet.
Product Application Details	
Applications	Western Blot, Flow Cytometry, Flow (Intracellular), Immunocytochemistry/Immunofluorescence, Immunohistochemistry, Immunohistochemistry-Frozen, Immunohistochemistry-Paraffin, Chromatin Immunoprecipitation (ChIP), Knockout Validated
Recommended Dilutions	Western Blot, Flow Cytometry, Immunohistochemistry, Immunocytochemistry/Immunofluorescence, Immunohistochemistry-Paraffin, Immunohistochemistry-Frozen, Flow (Intracellular), Chromatin Immunoprecipitation (ChIP), Knockout Validated
Application Notes	Optimal dilution of this antibody should be experimentally determined.

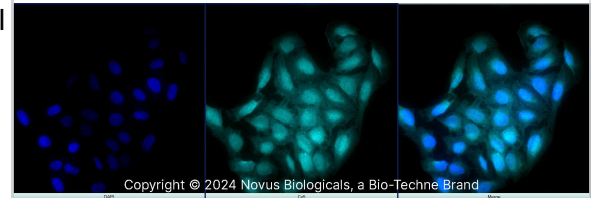


## Images

**Flow (Intracellular): BMAL1 Antibody [Alexa Fluor 647] [NB100-2288AF647]** - An intracellular stain was performed on HeLa cells with BMAL1 Antibody NB100-2288AF647 (blue) and a matched isotype control (orange). Cells were fixed with 4% PFA and then permeabilized with 0.1% saponin. Cells were incubated in an antibody dilution of 5 ug/mL for 30 minutes at room temperature. Both antibodies were conjugated to Alexa Fluor 647.



BMAL1 was detected in immersion fixed MCF7 human breast cancer cell line using Rabbit anti-BMAL1 Affinity Purified Polyclonal Antibody conjugated to Alexa Fluor® 647 (Catalog # NB100-2288AF647) (light blue) at 10 µg/mL overnight at 4C. Cells were stained counterstained with DAPI (blue). Cells were imaged using a 40X objective.



Copyright © 2024 Novus Biologicals, a Bio-Techne Brand



### **Novus Biologicals USA**

10730 E. Briarwood Avenue  
Centennial, CO 80112  
USA  
Phone: 303.730.1950  
Toll Free: 1.888.506.6887  
Fax: 303.730.1966  
nb-customerservice@bio-techne.com

### **Bio-Techne Canada**

21 Canmotor Ave  
Toronto, ON M8Z 4E6  
Canada  
Phone: 905.827.6400  
Toll Free: 855.668.8722  
Fax: 905.827.6402  
canada.inquires@bio-techne.com

### **Bio-Techne Ltd**

19 Barton Lane  
Abingdon Science Park  
Abingdon, OX14 3NB, United Kingdom  
Phone: (44) (0) 1235 529449  
Free Phone: 0800 37 34 15  
Fax: (44) (0) 1235 533420  
info.EMEA@bio-techne.com

### **General Contact Information**

www.novusbio.com  
Technical Support: nb-technical@bio-techne.com  
Orders: nb-customerservice@bio-techne.com  
General: novus@novusbio.com

### **Products Related to NB100-2288AF647**

---

NBP2-24891AF647	Rabbit IgG Isotype Control [Alexa Fluor® 647]
NB100-2288AF700	BMAL1 Antibody [Alexa Fluor® 700]
H00000406-P01-10ug	Recombinant Human BMAL1 GST (N-Term) Protein
664-LI-025	LIGHT/TNFSF14 [Unconjugated]

---

### **Limitations**

This product is for research use only and is not approved for use in humans or in clinical diagnosis. Primary Antibodies are guaranteed for 1 year from date of receipt.

For more information on our 100% guarantee, please visit [www.novusbio.com/guarantee](http://www.novusbio.com/guarantee)

Earn gift cards/discounts by submitting a review: [www.novusbio.com/reviews/submit/NB100-2288AF647](http://www.novusbio.com/reviews/submit/NB100-2288AF647)

Earn gift cards/discounts by submitting a publication using this product:  
[www.novusbio.com/publications](http://www.novusbio.com/publications)

