

# Product Datasheet

## RPL7A Antibody NB100-2277

Unit Size: 0.1 ml

Store at 4C. Do not freeze.

[www.novusbio.com](http://www.novusbio.com)



[technical@novusbio.com](mailto:technical@novusbio.com)

### Publications: 4

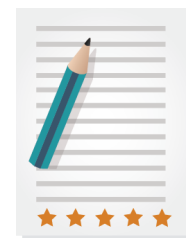
Protocols, Publications, Related Products, Reviews, Research Tools and Images at:  
[www.novusbio.com/NB100-2277](http://www.novusbio.com/NB100-2277)

Updated 10/23/2024 v.20.1

Earn rewards for product  
reviews and publications.

Submit a publication at [www.novusbio.com/publications](http://www.novusbio.com/publications)

Submit a review at [www.novusbio.com/reviews/destination/NB100-2277](http://www.novusbio.com/reviews/destination/NB100-2277)



**NB100-2277**

## RPL7A Antibody

Product Information	
Unit Size	0.1 ml
Concentration	0.2 mg/ml
Storage	Store at 4C. Do not freeze.
Clonality	Polyclonal
Preservative	0.09% Sodium Azide
Isotype	IgG
Purity	Immunogen affinity purified
Buffer	TBS and 0.1% BSA

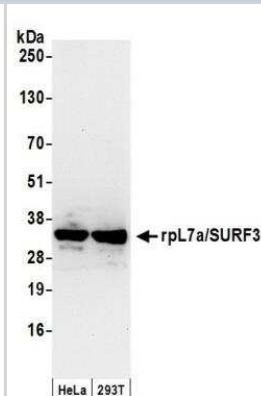
Product Description	
Host	Rabbit
Gene ID	6130
Gene Symbol	RPL7A
Species	Human, Mouse
Immunogen	The immunogen recognized by this antibody maps to a region between residue 215 and the C-terminus (residue 266) of human Ribosomal Protein L7a using the numbering given in entry NP_000963.1 (GenelD 6130).

Product Application Details	
Applications	Western Blot, Immunohistochemistry, Immunohistochemistry-Paraffin, Immunoprecipitation
Recommended Dilutions	Western Blot 1:2000-1:10000, Immunohistochemistry 1:100-1:500, Immunoprecipitation 2-5 ug/mg lysate, Immunohistochemistry-Paraffin 1:100 - 1:500
Application Notes	Epitope retrieval with Tris-EDTA pH9.0 is recommended for FFPE tissue sections.

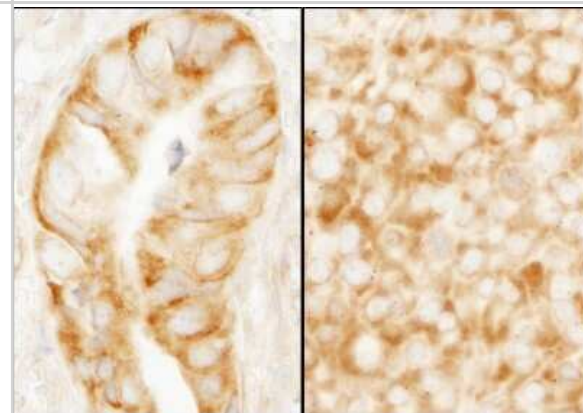


## Images

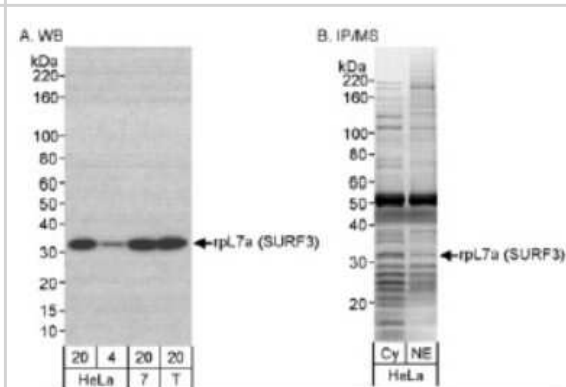
Western Blot: RPL7A Antibody [NB100-2277] - Whole cell lysate (50 ug) from HeLa and 293T cells prepared using NETN lysis buffer. Antibody: Affinity purified rabbit anti-rpL7a/SURF3 antibody NB100-2277 used for WB at 0.1 ug/ml. Detection: Chemiluminescence with an exposure time of 10 seconds.



Immunohistochemistry-Paraffin: RPL7A Antibody [NB100-2277] - Sample: FFPE sections of human colon carcinoma (left) and mouse renal cell carcinoma (right). Antibody: Affinity purified rabbit anti-rpL7a (SURF3) used at a dilution of 1:200 (1ug/ml). Detection: DAB



Western Blot: RPL7A Antibody [NB100-2277] - Detection of Human rpL7a (SURF3) on HeLa whole cell lysate using NB100-2277.



## Publications

McCoy M, Poliquin-Duchesneau D, Corbin F. Molecular dynamics of FMRP and other RNA-binding proteins in MEG-01 differentiation: the role of mRNP complexes in non-neuronal development. *Biochem Cell Biol* 2016-12-01 [PMID: 27860518]

El Fatimy R, Davidovic L, Tremblay S et al. Tracking the Fragile X Mental Retardation Protein in a Highly Ordered Neuronal RiboNucleoParticles Population: A Link between Stalled Polyribosomes and RNA Granules. *PLoS Genet.* 2016-07-01 [PMID: 27462983] (WB, Mouse)

Frolova EI, Gorchakov R, Pereboeva L et al. Functional Sindbis virus replicative complexes are formed at the plasma membrane. *J Virol* 2010-11-01 [PMID: 20826696]

Lauziere V, Lessard M, Meunier AJ et al. Unusual subcellular confinement of the fragile X mental retardation protein (FMRP) in human platelets: Complete polyribosome dissociation. *Biochimie.* 2011-12-21 [PMID: 22210492]



### **Novus Biologicals USA**

10730 E. Briarwood Avenue  
Centennial, CO 80112  
USA  
Phone: 303.730.1950  
Toll Free: 1.888.506.6887  
Fax: 303.730.1966  
nb-customerservice@bio-techne.com

### **Bio-Techne Canada**

21 Canmotor Ave  
Toronto, ON M8Z 4E6  
Canada  
Phone: 905.827.6400  
Toll Free: 855.668.8722  
Fax: 905.827.6402  
canada.inquires@bio-techne.com

### **Bio-Techne Ltd**

19 Barton Lane  
Abingdon Science Park  
Abingdon, OX14 3NB, United Kingdom  
Phone: (44) (0) 1235 529449  
Free Phone: 0800 37 34 15  
Fax: (44) (0) 1235 533420  
info.EMEA@bio-techne.com

### **General Contact Information**

www.novusbio.com  
Technical Support: nb-technical@bio-techne.com  
Orders: nb-customerservice@bio-techne.com  
General: novus@novusbio.com

### **Products Related to NB100-2277**

---

NBL1-15544	RPL7A Overexpression Lysate
HAF008	Goat anti-Rabbit IgG Secondary Antibody [HRP]
NB7160	Goat anti-Rabbit IgG (H+L) Secondary Antibody [HRP]
NBP2-24891	Rabbit IgG Isotype Control

---

### **Limitations**

This product is for research use only and is not approved for use in humans or in clinical diagnosis. Primary Antibodies are guaranteed for 1 year from date of receipt.

For more information on our 100% guarantee, please visit [www.novusbio.com/guarantee](http://www.novusbio.com/guarantee)

Earn gift cards/discounts by submitting a review: [www.novusbio.com/reviews/submit/NB100-2277](http://www.novusbio.com/reviews/submit/NB100-2277)

Earn gift cards/discounts by submitting a publication using this product:  
[www.novusbio.com/publications](http://www.novusbio.com/publications)

