

Product Datasheet

BRCA1 [p Ser1423] Antibody - BSA Free NB100-226

Unit Size: 100 ul

Store at 4C. Do not freeze.

www.novusbio.com



technical@novusbio.com

Publications: 7

Protocols, Publications, Related Products, Reviews, Research Tools and Images at:
www.novusbio.com/NB100-226

Updated 2/21/2025 v.20.1

Earn rewards for product
reviews and publications.

Submit a publication at www.novusbio.com/publications

Submit a review at www.novusbio.com/reviews/destination/NB100-226



NB100-226

BRCA1 [p Ser1423] Antibody - BSA Free

Product Information	
Unit Size	100 ul
Concentration	1.0 mg/ml
Storage	Store at 4C. Do not freeze.
Clonality	Polyclonal
Preservative	0.09% Sodium Azide
Isotype	IgG
Purity	Immunogen affinity purified
Buffer	Tris-Citrate/Phosphate (pH 7.0 - 8.0)
Target Molecular Weight	220 kDa

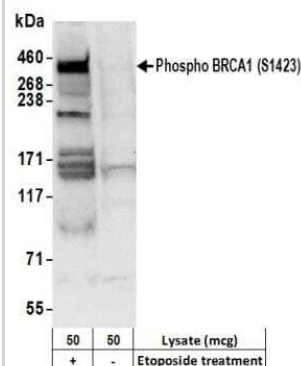
Product Description	
Host	Rabbit
Gene ID	672
Gene Symbol	BRCA1
Species	Human
Reactivity Notes	Gorilla (100%), Chimpanzee (100%).
Immunogen	Immunogen for this antibody was a phosphorylated synthetic peptide, which represented a portion of human Breast Cancer Gene 1 (GeneID 672) around serine 1423 according to the numbering given in entry NP_009225.1.

Product Application Details	
Applications	Western Blot, Flow Cytometry
Recommended Dilutions	Western Blot 1:1000-1:10000, Flow Cytometry 1:10-1:1000
Application Notes	Use in FLOW cytometry reported in scientific literature (PMID: 24965603).

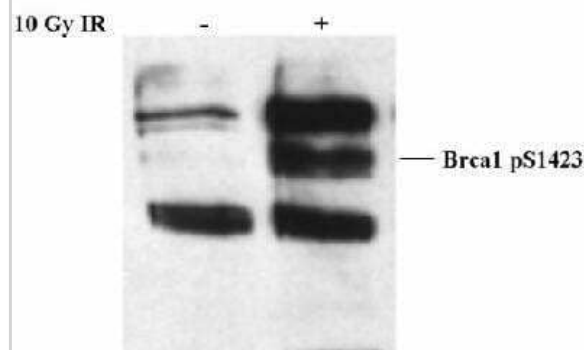


Images

Western Blot: BRCA1 [p Ser1423] Antibody [NB100-226] - Detection of Human Phospho BRCA1 (S1423) by Western Blot. Samples : Whole cell lysate (50 ug) from HeLa cells treated with 100 uM EPE for 4 hours (+) or mock treated (-) cells. Antibody: Affinity purified rabbit anti-Phospho BRCA1 (S1423) antibody NB100-226 used for WB at 0.1 ug/ml. Detection: Chemiluminescence with an exposure time of 10 seconds.



Western Blot: BRCA1 [p Ser1423] Antibody [NB100-226] - Detection of Brca1 phospho Ser 1423 by Western blot using NB 100-226. Sample whole cell lysate (25 mcg/lane) from HeLa cells treated with 10 Gy IR or untreated. NB 100-226 was used at 1:2500 dilution.



Publications

Ntokou A, Klein F, Dontireddy D et al. Characterization of the platelet-derived growth factor receptor-alpha-positive cell lineage during murine late lung development. *Am J Physiol Lung Cell Mol Physiol* 2015-11-01 [PMID: 26320158]

Rosen DB, Leung LY, Louie B et al. Quantitative measurement of alterations in DNA damage repair (DDR) pathways using single cell network profiling (SCNP). *J Transl Med* 2014-07-16 [PMID: 24965603] (FLOW, Human)

Details:

BRCA1 [p Ser1423] antibody used for FLOW on several cell lines - ATM wild type cell lines [U937 and RS4;11 (ATCC), GM00536 and GM09703 (Coriell)], ATM +/- cell line [GM03323 (Coriell)] and two ATM-/- cell lines [GM01526 and GM03189 (Coriell)].

Nunnari G, Argyris E, Fang J et al. Inhibition of HIV-1 replication by caffeine and caffeine-related methylxanthines. *Virology* 2005-05-01 [PMID: 15840517]

Andersen JL, Zimmerman ES, DeHart JL et al. ATR and GADD45alpha mediate HIV-1 Vpr-induced apoptosis. *Cell Death Differ* 2005-04-01 [PMID: 15650754]

Rusin M, Zajkowicz A, Butkiewicz D. Resveratrol induces senescence-like growth inhibition of U-2 OS cells associated with the instability of telomeric DNA and upregulation of BRCA1. *Mech Ageing Dev* 2009-08-01 [PMID: 19559722] (WB, Human)

Cheng WH, Muftic D, Muftuoglu M et al. WRN is required for ATM activation and the S-phase checkpoint in response to interstrand cross-link-induced DNA double-strand breaks. *Mol Biol Cell* 2008-09-01 [PMID: 18596239]

1 Zaugg, K, Su, Y-W, Reilly, P T, Moolani, Y, Cheung, C C, Hakem, R, Hirao, A, Elledge, S J, Mak, T W. Cross-talk between Chk1 Chk2 in double-mutant thymocytes, . 104, 3805-3810. 2007-01-01 [PMID: 17360434]



Novus Biologicals USA

10730 E. Briarwood Avenue
Centennial, CO 80112
USA
Phone: 303.730.1950
Toll Free: 1.888.506.6887
Fax: 303.730.1966
nb-customerservice@bio-techne.com

Bio-Techne Canada

21 Canmotor Ave
Toronto, ON M8Z 4E6
Canada
Phone: 905.827.6400
Toll Free: 855.668.8722
Fax: 905.827.6402
canada.inquires@bio-techne.com

Bio-Techne Ltd

19 Barton Lane
Abingdon Science Park
Abingdon, OX14 3NB, United Kingdom
Phone: (44) (0) 1235 529449
Free Phone: 0800 37 34 15
Fax: (44) (0) 1235 533420
info.EMEA@bio-techne.com

General Contact Information

www.novusbio.com
Technical Support: nb-technical@bio-techne.com
Orders: nb-customerservice@bio-techne.com
General: novus@novusbio.com

Products Related to NB100-226

HAF008	Goat anti-Rabbit IgG Secondary Antibody [HRP]
NB7160	Goat anti-Rabbit IgG (H+L) Secondary Antibody [HRP]
NBP2-24891	Rabbit IgG Isotype Control
H00000672-P01-25ug	Recombinant Human BRCA1 GST (N-Term) Protein

Limitations

This product is for research use only and is not approved for use in humans or in clinical diagnosis. Primary Antibodies are guaranteed for 1 year from date of receipt.

For more information on our 100% guarantee, please visit www.novusbio.com/guarantee

Earn gift cards/discounts by submitting a review: www.novusbio.com/reviews/submit/NB100-226

Earn gift cards/discounts by submitting a publication using this product:
www.novusbio.com/publications

