

# Product Datasheet

## eIF2 alpha/EIF2S1 Antibody

### NB100-2249

Unit Size: 100 ul

Store at 4C. Do not freeze.

[www.novusbio.com](http://www.novusbio.com)



[technical@novusbio.com](mailto:technical@novusbio.com)

#### Publications: 1

Protocols, Publications, Related Products, Reviews, Research Tools and Images at:  
[www.novusbio.com/NB100-2249](http://www.novusbio.com/NB100-2249)

Updated 10/23/2024 v.20.1

Earn rewards for product  
reviews and publications.

Submit a publication at [www.novusbio.com/publications](http://www.novusbio.com/publications)

Submit a review at [www.novusbio.com/reviews/destination/NB100-2249](http://www.novusbio.com/reviews/destination/NB100-2249)



**NB100-2249**

eIF2 alpha/EIF2S1 Antibody

Product Information	
Unit Size	100 ul
Concentration	0.2 mg/ml
Storage	Store at 4C. Do not freeze.
Clonality	Polyclonal
Preservative	0.09% Sodium Azide
Isotype	IgG
Purity	Immunogen affinity purified
Buffer	TBS and 0.1% BSA
Target Molecular Weight	36 kDa

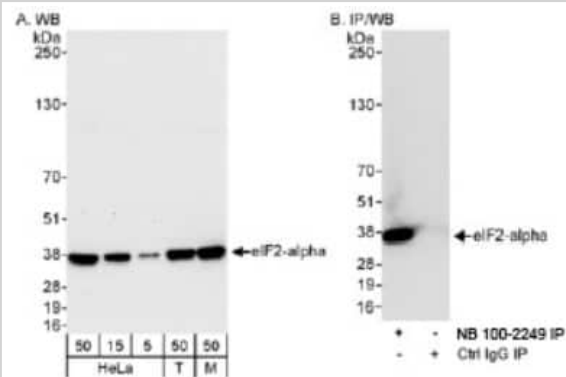
Product Description	
Host	Rabbit
Gene ID	1965
Gene Symbol	EIF2S1
Species	Human, Mouse
Reactivity Notes	Orangutan (100%).
Immunogen	The immunogen recognized by this antibody maps to a region between residue 275 and the C-terminus (residue 315) of human Eukaryotic Translation Initiation Factor 1, subunit 1 alpha, 35kDa using the numbering given in entry NP_004085.1 (GeneID 1965).

Product Application Details	
Applications	Western Blot, Immunohistochemistry, Immunohistochemistry-Paraffin, Immunoprecipitation
Recommended Dilutions	Western Blot 1:2000-1:10000, Immunohistochemistry 1:200-1:1000, Immunoprecipitation 2-5 ug/mg lysate, Immunohistochemistry-Paraffin 1:200-1:1000
Application Notes	Epitope retrieval with Tris-EDTA pH 9.0 is recommended for FFPE tissue sections.

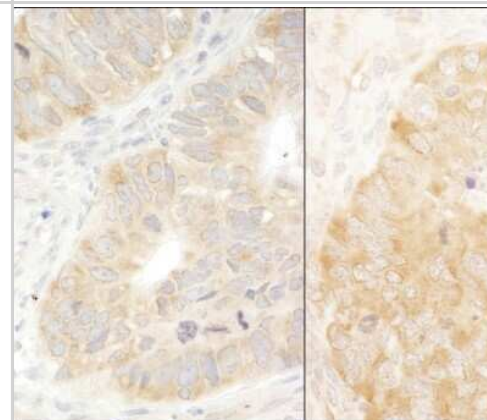


## Images

Western Blot: eIF2 alpha/EIF2S1 Antibody [NB100-2249] - Detection of Human and Mouse eIF2-alpha on HeLa whole cell lysate using NB100-2249.



Immunohistochemistry-Paraffin: eIF2 alpha/EIF2S1 Antibody [NB100-2249] - Human colon carcinoma (left) and mouse teratoma (right). Antibody: Affinity purified rabbit anti-eIF2alpha/EIF2S1 used at a dilution of 1:1,000 (0.2ug/ml) and 1:200 (1ug/ml). Detection: DAB



## Publications

Qin Q, Hastings C, Miller CL et al. Mammalian orthoreovirus particles induce and are recruited into stress granules at early times postinfection. *J Virol* 2009-11-01 [PMID: 19710141]



### **Novus Biologicals USA**

10730 E. Briarwood Avenue  
Centennial, CO 80112  
USA  
Phone: 303.730.1950  
Toll Free: 1.888.506.6887  
Fax: 303.730.1966  
nb-customerservice@bio-techne.com

### **Bio-Techne Canada**

21 Canmotor Ave  
Toronto, ON M8Z 4E6  
Canada  
Phone: 905.827.6400  
Toll Free: 855.668.8722  
Fax: 905.827.6402  
canada.inquires@bio-techne.com

### **Bio-Techne Ltd**

19 Barton Lane  
Abingdon Science Park  
Abingdon, OX14 3NB, United Kingdom  
Phone: (44) (0) 1235 529449  
Free Phone: 0800 37 34 15  
Fax: (44) (0) 1235 533420  
info.EMEA@bio-techne.com

### **General Contact Information**

www.novusbio.com  
Technical Support: nb-technical@bio-techne.com  
Orders: nb-customerservice@bio-techne.com  
General: novus@novusbio.com

### **Products Related to NB100-2249**

---

HAF008	Goat anti-Rabbit IgG Secondary Antibody [HRP]
NB7160	Goat anti-Rabbit IgG (H+L) Secondary Antibody [HRP]
NBP2-24891	Rabbit IgG Isotype Control
NBP1-44467	Recombinant Human eIF2 alpha/EIF2S1 His Protein

---

### **Limitations**

This product is for research use only and is not approved for use in humans or in clinical diagnosis. Primary Antibodies are guaranteed for 1 year from date of receipt.

For more information on our 100% guarantee, please visit [www.novusbio.com/guarantee](http://www.novusbio.com/guarantee)

Earn gift cards/discounts by submitting a review: [www.novusbio.com/reviews/submit/NB100-2249](http://www.novusbio.com/reviews/submit/NB100-2249)

Earn gift cards/discounts by submitting a publication using this product:  
[www.novusbio.com/publications](http://www.novusbio.com/publications)

