

# Product Datasheet

## SAP102 Antibody NB100-2063

Unit Size: 100ug

Store at -20C. Avoid freeze-thaw cycles.

[www.novusbio.com](http://www.novusbio.com)



[technical@novusbio.com](mailto:technical@novusbio.com)

Protocols, Publications, Related Products, Reviews, Research Tools and Images at:  
[www.novusbio.com/NB100-2063](http://www.novusbio.com/NB100-2063)

Updated 10/23/2024 v.20.1

Earn rewards for product  
reviews and publications.

Submit a publication at [www.novusbio.com/publications](http://www.novusbio.com/publications)

Submit a review at [www.novusbio.com/reviews/destination/NB100-2063](http://www.novusbio.com/reviews/destination/NB100-2063)



**NB100-2063****SAP102 Antibody**

<b>Product Information</b>	
<b>Unit Size</b>	100ug
<b>Concentration</b>	1 mg/ml
<b>Storage</b>	Store at -20C. Avoid freeze-thaw cycles.
<b>Clonality</b>	Polyclonal
<b>Preservative</b>	0.05% Sodium Azide
<b>Isotype</b>	IgG
<b>Purity</b>	Immunogen affinity purified
<b>Buffer</b>	PBS with 1 mg/ml BSA

<b>Product Description</b>	
<b>Host</b>	Rabbit
<b>Gene ID</b>	1741
<b>Gene Symbol</b>	DLG3
<b>Species</b>	Mouse, Rat
<b>Reactivity Notes</b>	Mouse reactivity reported in scientific literature (PMID: 12438413).
<b>Specificity/Sensitivity</b>	SAP102
<b>Immunogen</b>	Synthetic peptide corresponding to residues G(83) P V P P K P V P G K N T P K L N G(100) of rat SAP102.

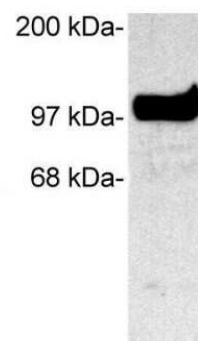
<b>Product Application Details</b>	
<b>Applications</b>	Western Blot, Immunohistochemistry, Immunohistochemistry-Frozen
<b>Recommended Dilutions</b>	Western Blot 3 ug/ml, Immunohistochemistry 1:10 - 1:500, Immunohistochemistry-Frozen 10 ug/ml
<b>Application Notes</b>	May be Useful in WB. WB: Detects an approx. 102 kDa protein representing SAP 102 in rat brain homogenate. IHC: Staining of SAP 102 in rat hippocampus yields a pattern consistent with post-synaptic localization.



## Images

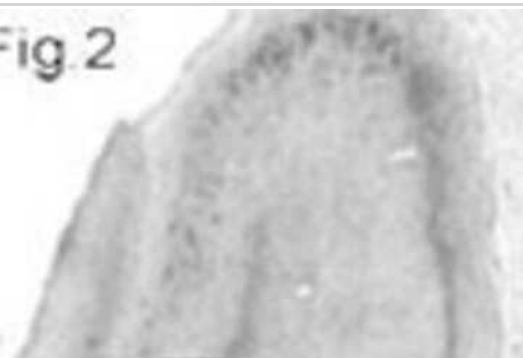
Western Blot: SAP102 Antibody [NB100-2063] - Analysis of SAP102 on extract from COS cells transfected with rat SAP102.

Fig. 1



Immunohistochemistry-Frozen: SAP102 Antibody [NB100-2063] - Staining of Ammon's Horn and the dentate gyrus of the rat hippocampus.

Fig. 2





### **Novus Biologicals USA**

10730 E. Briarwood Avenue  
Centennial, CO 80112  
USA  
Phone: 303.730.1950  
Toll Free: 1.888.506.6887  
Fax: 303.730.1966  
nb-customerservice@bio-techne.com

### **Bio-Techne Canada**

21 Canmotor Ave  
Toronto, ON M8Z 4E6  
Canada  
Phone: 905.827.6400  
Toll Free: 855.668.8722  
Fax: 905.827.6402  
canada.inquires@bio-techne.com

### **Bio-Techne Ltd**

19 Barton Lane  
Abingdon Science Park  
Abingdon, OX14 3NB, United Kingdom  
Phone: (44) (0) 1235 529449  
Free Phone: 0800 37 34 15  
Fax: (44) (0) 1235 533420  
info.EMEA@bio-techne.com

### **General Contact Information**

www.novusbio.com  
Technical Support: nb-technical@bio-techne.com  
Orders: nb-customerservice@bio-techne.com  
General: novus@novusbio.com

### **Products Related to NB100-2063**

---

HAF008	Goat anti-Rabbit IgG Secondary Antibody [HRP]
NB7160	Goat anti-Rabbit IgG (H+L) Secondary Antibody [HRP]
NBP2-24891	Rabbit IgG Isotype Control
H00001741-P01-10ug	Recombinant Human SAP102 GST (N-Term) Protein

---

### **Limitations**

This product is for research use only and is not approved for use in humans or in clinical diagnosis. Primary Antibodies are guaranteed for 1 year from date of receipt.

For more information on our 100% guarantee, please visit [www.novusbio.com/guarantee](http://www.novusbio.com/guarantee)

Earn gift cards/discounts by submitting a review: [www.novusbio.com/reviews/submit/NB100-2063](http://www.novusbio.com/reviews/submit/NB100-2063)

Earn gift cards/discounts by submitting a publication using this product:  
[www.novusbio.com/publications](http://www.novusbio.com/publications)

