

# Product Datasheet

## LAMP-1/CD107a Antibody (LY1C6) - BSA Free NB100-1952-100ug

Unit Size: 100 ug

Store at 4C short term. Aliquot and store at -20C long term. Avoid freeze-thaw cycles.

[www.novusbio.com](http://www.novusbio.com)



[technical@novusbio.com](mailto:technical@novusbio.com)

### Publications: 2

Protocols, Publications, Related Products, Reviews, Research Tools and Images at:  
[www.novusbio.com/NB100-1952](http://www.novusbio.com/NB100-1952)

Updated 2/21/2025 v.20.1

Earn rewards for product  
reviews and publications.

Submit a publication at [www.novusbio.com/publications](http://www.novusbio.com/publications)

Submit a review at [www.novusbio.com/reviews/destination/NB100-1952](http://www.novusbio.com/reviews/destination/NB100-1952)



**NB100-1952-100ug**

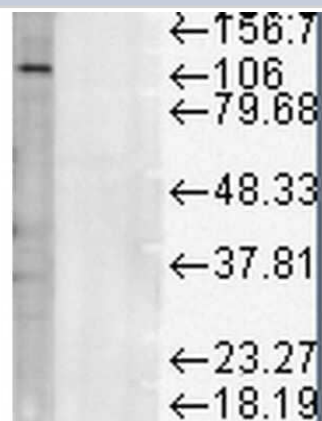
LAMP-1/CD107a Antibody (LY1C6) - BSA Free

Product Information	
Unit Size	100 ug
Concentration	1 mg/ml
Storage	Store at 4C short term. Aliquot and store at -20C long term. Avoid freeze-thaw cycles.
Clonality	Monoclonal
Clone	LY1C6
Preservative	0.09% Sodium Azide
Isotype	IgG1
Purity	Protein G purified
Buffer	PBS (pH 7.4), 50% Glycerol
Product Description	
Host	Mouse
Gene ID	3916
Gene Symbol	LAMP1
Species	Human, Mouse, Rat, Hamster
Marker	Late Endosome Marker
Specificity/Sensitivity	Detects approx 120kDa.
Immunogen	Rat liver lysosomal membrane preparations
Product Application Details	
Applications	Western Blot, Immunocytochemistry/ Immunofluorescence, Immunoprecipitation
Recommended Dilutions	Western Blot 1:1000, Immunocytochemistry/ Immunofluorescence 1:1000, Immunoprecipitation
Application Notes	1 ug/ml was sufficient for detection of LAMP1 in rat liver microsome by ECL immunoblot analysis.

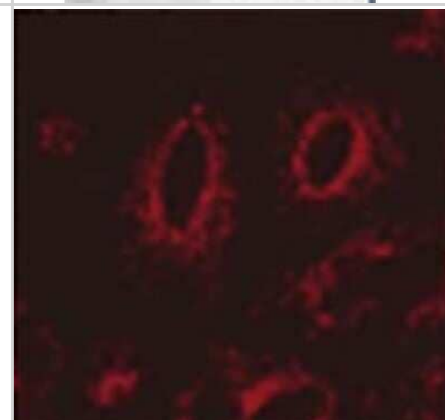


## Images

**Western Blot: LAMP-1/CD107a Antibody (LY1C6) [NB100-1952] -**  
 Western Blot analysis of Rat liver microsome lysate showing detection of LAMP-1/CD107a protein using Mouse Anti-LAMP-1/CD107a Monoclonal Antibody, Clone Ly1C6 (NB100-1952). Load: 15 ug. Block: 1.5% BSA for 30 minutes at RT. Primary Antibody: Mouse Anti-LAMP-1/CD107a Monoclonal Antibody (NB100-1952) at 1:1000 for 2 hours at RT. Secondary Antibody: Sheep Anti-Mouse IgG: HRP for 1 hour at RT.



**Immunocytochemistry/Immunofluorescence: LAMP-1/CD107a Antibody (LY1C6) [NB100-1952] - analysis using Mouse Anti-LAMP1 Monoclonal Antibody, Clone Ly1C6 .** Tissue: transfected HeLa cells. Species: Human. Primary Antibody: Mouse Anti-LAMP1 Monoclonal Antibody at 1:1000. Secondary Antibody: APC Goat Anti-Mouse (red). Courtesy of: Robert H Edwards, U. of Cali, San Fran School of Medicine.



## Publications

Halbert D, Domenyuk V, Spetzler D et al. Aptamers and uses thereof United States Patent Application US 9958448 B2 2018-01-01

Liu J, Zhang J-P, Shi M et al. Rab11a HSP90 Regulate Recycling of Extracellular {alpha}-Synuclein. J Neurosci;29 (5):1480-1485. 2009-01-01 [PMID: 19193894]



### **Novus Biologicals USA**

10730 E. Briarwood Avenue  
Centennial, CO 80112  
USA  
Phone: 303.730.1950  
Toll Free: 1.888.506.6887  
Fax: 303.730.1966  
nb-customerservice@bio-techne.com

### **Bio-Techne Canada**

21 Canmotor Ave  
Toronto, ON M8Z 4E6  
Canada  
Phone: 905.827.6400  
Toll Free: 855.668.8722  
Fax: 905.827.6402  
canada.inquires@bio-techne.com

### **Bio-Techne Ltd**

19 Barton Lane  
Abingdon Science Park  
Abingdon, OX14 3NB, United Kingdom  
Phone: (44) (0) 1235 529449  
Free Phone: 0800 37 34 15  
Fax: (44) (0) 1235 533420  
info.EMEA@bio-techne.com

### **General Contact Information**

www.novusbio.com  
Technical Support: nb-technical@bio-techne.com  
Orders: nb-customerservice@bio-techne.com  
General: novus@novusbio.com

### **Products Related to NB100-1952-100ug**

HAF007	Goat anti-Mouse IgG Secondary Antibody [HRP]
NB720-B	Rabbit anti-Mouse IgG (H+L) Secondary Antibody [Biotin]
NBP1-97005-0.5mg	Mouse IgG1 Isotype Control (MG1)
NB100-1952UV	LAMP-1/CD107a Antibody (LY1C6) [DyLight 350]

### **Limitations**

This product is for research use only and is not approved for use in humans or in clinical diagnosis. Primary Antibodies are guaranteed for 1 year from date of receipt.

For more information on our 100% guarantee, please visit [www.novusbio.com/guarantee](http://www.novusbio.com/guarantee)

Earn gift cards/discounts by submitting a review: [www.novusbio.com/reviews/submit/NB100-1952](http://www.novusbio.com/reviews/submit/NB100-1952)

Earn gift cards/discounts by submitting a publication using this product:  
[www.novusbio.com/publications](http://www.novusbio.com/publications)

