

# Product Datasheet

## GABA Transporter 2 Antibody

### NB100-1872

Unit Size: 0.2 ml

Store at 4C short term. Aliquot and store at -20C long term. Avoid freeze-thaw cycles.

[www.novusbio.com](http://www.novusbio.com)



[technical@novusbio.com](mailto:technical@novusbio.com)

#### Publications: 2

Protocols, Publications, Related Products, Reviews, Research Tools and Images at:  
[www.novusbio.com/NB100-1872](http://www.novusbio.com/NB100-1872)

Updated 10/23/2024 v.20.1

Earn rewards for product  
reviews and publications.

Submit a publication at [www.novusbio.com/publications](http://www.novusbio.com/publications)

Submit a review at [www.novusbio.com/reviews/destination/NB100-1872](http://www.novusbio.com/reviews/destination/NB100-1872)



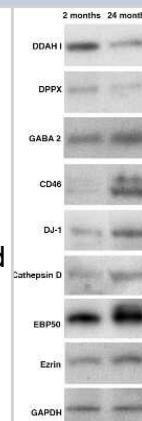
**NB100-1872****GABA Transporter 2 Antibody**

<b>Product Information</b>	
<b>Unit Size</b>	0.2 ml
<b>Concentration</b>	This product is unpurified. The exact concentration of antibody is not quantifiable.
<b>Storage</b>	Store at 4C short term. Aliquot and store at -20C long term. Avoid freeze-thaw cycles.
<b>Clonality</b>	Polyclonal
<b>Preservative</b>	No Preservative
<b>Reconstitution Instructions</b>	Lyophilized powder, reconstituted in distilled water.
<b>Isotype</b>	IgG
<b>Purity</b>	Unpurified
<b>Buffer</b>	Antiserum
<b>Product Description</b>	
<b>Host</b>	Rabbit
<b>Gene ID</b>	6540
<b>Gene Symbol</b>	SLC6A13
<b>Species</b>	Human, Mouse, Rat
<b>Reactivity Notes</b>	Cross-reacts with Human, Mouse, Rat and Chicken (see review). Not yet tested in other species.
<b>Specificity/Sensitivity</b>	Reacts specifically with protein derived from CNS samples.
<b>Immunogen</b>	A 15 residue C-terminal domain synthetic peptide (Rat).
<b>Product Application Details</b>	
<b>Applications</b>	Western Blot, ELISA, Flow Cytometry
<b>Recommended Dilutions</b>	Western Blot 1/200-1/5000, Flow Cytometry, ELISA



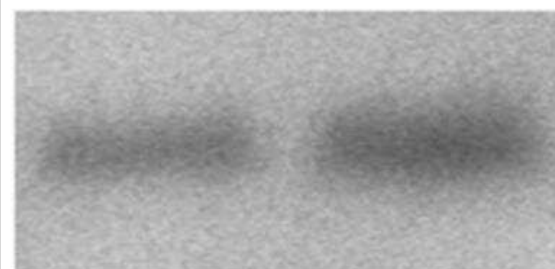
## Images

Western Blot: GABA Transporter 2 Antibody [NB100-1872] - Levels of identified proteins in RPE lysates. Both young (2 months) and old (24 months) RPE cells were harvested, lysed. 20 ug of protein of each sample was separated on a 4-20% SDS gel, transferred to PVDF membranes and probed with antibodies specified followed by ECF detection of immunoreactivity. Decreased content of DDAH I and DPPX were observed in old RPE lysates. Contrary, increased content of GABA2, CD46, DJ-1, cathepsin D, EBP50 and ezrin were detected in old RPE lysates. Image collected and cropped by CiteAb from the following publication ([//dx.plos.org/10.1371/journal.pone.0038673](https://doi.org/10.1371/journal.pone.0038673)) licensed under a CC-BY license.

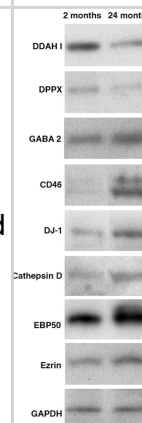


Western Blot: GABA Transporter 2 Antibody [NB100-1872] - Analysis of GABA 2 levels in 20 ug of young and old RPE cell lysates. [PMID: 22701690]

**2 months    24 months**



Levels of identified proteins in RPE lysates. Both young (2 months) and old (24 months) RPE cells were harvested, lysed. 20 µg of protein of each sample was separated on a 4–20% SDS gel, transferred to PVDF membranes and probed with antibodies specified followed by ECF detection of immunoreactivity. Decreased content of DDAH I and DPPX were observed in old RPE lysates. Contrary, increased content of GABA2, CD46, DJ-1, cathepsin D, EBP50 and ezrin were detected in old RPE lysates.



## Publications

Lee M, McGeer EG, McGeer PL. Mechanisms of GABA release from human astrocytes. *Glia* 2011-11-01 [PMID: 21748804] (WB, Human)

Gu X, Neric NJ, Crabb JS et al. Age-Related Changes in the Retinal Pigment Epithelium (RPE) *PLoS One* 2012-01-01 [PMID: 22701690] (WB, Rat)



### **Novus Biologicals USA**

10730 E. Briarwood Avenue  
Centennial, CO 80112  
USA  
Phone: 303.730.1950  
Toll Free: 1.888.506.6887  
Fax: 303.730.1966  
nb-customerservice@bio-techne.com

### **Bio-Techne Canada**

21 Canmotor Ave  
Toronto, ON M8Z 4E6  
Canada  
Phone: 905.827.6400  
Toll Free: 855.668.8722  
Fax: 905.827.6402  
canada.inquires@bio-techne.com

### **Bio-Techne Ltd**

19 Barton Lane  
Abingdon Science Park  
Abingdon, OX14 3NB, United Kingdom  
Phone: (44) (0) 1235 529449  
Free Phone: 0800 37 34 15  
Fax: (44) (0) 1235 533420  
info.EMEA@bio-techne.com

### **General Contact Information**

www.novusbio.com  
Technical Support: nb-technical@bio-techne.com  
Orders: nb-customerservice@bio-techne.com  
General: novus@novusbio.com

### **Products Related to NB100-1872**

---

HAF008	Goat anti-Rabbit IgG Secondary Antibody [HRP]
NB7160	Goat anti-Rabbit IgG (H+L) Secondary Antibody [HRP]
NBP2-24891	Rabbit IgG Isotype Control
8334-GT-025	MGAT1 [Unconjugated]

---

### **Limitations**

This product is for research use only and is not approved for use in humans or in clinical diagnosis. Primary Antibodies are guaranteed for 1 year from date of receipt.

For more information on our 100% guarantee, please visit [www.novusbio.com/guarantee](http://www.novusbio.com/guarantee)

Earn gift cards/discounts by submitting a review: [www.novusbio.com/reviews/submit/NB100-1872](http://www.novusbio.com/reviews/submit/NB100-1872)

Earn gift cards/discounts by submitting a publication using this product:  
[www.novusbio.com/publications](http://www.novusbio.com/publications)

