

Product Datasheet

EAAT1/GLAST-1/SLC1A3 Antibody [FITC] NB100-1869F

Unit Size: 0.1 ml

Store at 4C in the dark.

www.novusbio.com



technical@novusbio.com

Protocols, Publications, Related Products, Reviews, Research Tools and Images at:
www.novusbio.com/NB100-1869F

Updated 10/23/2024 v.20.1

Earn rewards for product
reviews and publications.

Submit a publication at www.novusbio.com/publications

Submit a review at www.novusbio.com/reviews/destination/NB100-1869F



NB100-1869F

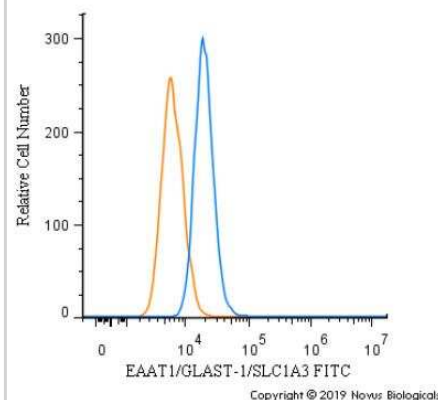
EAAT1/GLAST-1/SLC1A3 Antibody [FITC]

Product Information	
Unit Size	0.1 ml
Concentration	Please see the vial label for concentration. If unlisted please contact technical services.
Storage	Store at 4C in the dark.
Clonality	Polyclonal
Preservative	0.05% Sodium Azide
Isotype	IgG
Conjugate	FITC
Purity	Immunogen affinity purified
Buffer	PBS
Product Description	
Host	Rabbit
Gene ID	6507
Gene Symbol	SLC1A3
Species	Human, Mouse, Rat
Immunogen	A synthetic peptide made to a C-terminal portion of the rat SLC1A3 protein (between residues 500-542) [Uniprot: P24942]
Product Application Details	
Applications	Western Blot, ELISA, Flow Cytometry, Flow (Intracellular), Immunocytochemistry/ Immunofluorescence, Immunohistochemistry, Immunohistochemistry-Frozen, Immunohistochemistry-Paraffin
Recommended Dilutions	Western Blot, Flow Cytometry, ELISA, Immunohistochemistry, Immunocytochemistry/ Immunofluorescence, Immunohistochemistry-Paraffin, Immunohistochemistry-Frozen, Flow (Intracellular)
Application Notes	Optimal dilution of this antibody should be experimentally determined.

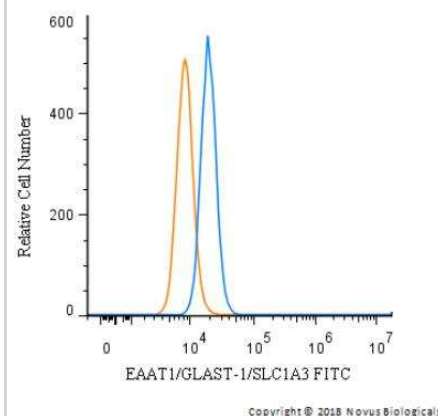


Images

Flow Cytometry: EAAT1/GLAST-1/SLC1A3 Antibody [FITC] [NB100-1869F] - An intracellular stain was performed on Caco-2 cells with EAAT1/GLAST-1/SLC1A3 Antibody NB100-1869F (blue) and a matched isotype control (orange). Cells were fixed with 4% PFA and then permeabilized with 0.1% saponin. Cells were incubated in an antibody dilution of 10 ug/mL for 30 minutes at room temperature. Both antibodies were conjugated to FITC.



Flow Cytometry: EAAT1/GLAST-1/SLC1A3 Antibody [FITC] [NB100-1869F] - An intracellular stain was performed on HeLa cells with EAAT1/GLAST-1/SLC1A3 Antibody NB100-1869F (blue) and a matched isotype control (orange). Cells were fixed with 4% PFA and then permeabilized with 0.1% saponin. Cells were incubated in an antibody dilution of 10 ug/mL for 30 minutes at room temperature. Both antibodies were conjugated to FITC.





Novus Biologicals USA

10730 E. Briarwood Avenue
Centennial, CO 80112
USA
Phone: 303.730.1950
Toll Free: 1.888.506.6887
Fax: 303.730.1966
nb-customerservice@bio-techne.com

Bio-Techne Canada

21 Canmotor Ave
Toronto, ON M8Z 4E6
Canada
Phone: 905.827.6400
Toll Free: 855.668.8722
Fax: 905.827.6402
canada.inquires@bio-techne.com

Bio-Techne Ltd

19 Barton Lane
Abingdon Science Park
Abingdon, OX14 3NB, United Kingdom
Phone: (44) (0) 1235 529449
Free Phone: 0800 37 34 15
Fax: (44) (0) 1235 533420
info.EMEA@bio-techne.com

General Contact Information

www.novusbio.com
Technical Support: nb-technical@bio-techne.com
Orders: nb-customerservice@bio-techne.com
General: novus@novusbio.com

Products Related to NB100-1869F

NBP2-24892	Rabbit IgG Isotype Control [FITC]
NB100-1869PEP	EAAT1/GLAST-1/SLC1A3 Antibody Blocking Peptide
236-EG-200	EGF [Unconjugated]
H00006507-Q01-10ug	Recombinant Human EAAT1/GLAST-1/SLC1A3 GST (N-Term) Protein

Limitations

This product is for research use only and is not approved for use in humans or in clinical diagnosis. Primary Antibodies are guaranteed for 1 year from date of receipt.

For more information on our 100% guarantee, please visit www.novusbio.com/guarantee

Earn gift cards/discounts by submitting a review: www.novusbio.com/reviews/submit/NB100-1869F

Earn gift cards/discounts by submitting a publication using this product:
www.novusbio.com/publications

