

Product Datasheet

CLCA1 Antibody NB100-1791

Unit Size: 0.1 mg

Store at -20C. Avoid freeze-thaw cycles.

www.novusbio.com



technical@novusbio.com

Publications: 1

Protocols, Publications, Related Products, Reviews, Research Tools and Images at:
www.novusbio.com/NB100-1791

Updated 10/23/2024 v.20.1

Earn rewards for product
reviews and publications.

Submit a publication at www.novusbio.com/publications

Submit a review at www.novusbio.com/reviews/destination/NB100-1791



NB100-1791

CLCA1 Antibody

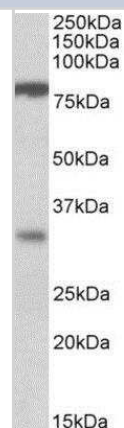
Product Information	
Unit Size	0.1 mg
Concentration	0.5 mg/ml
Storage	Store at -20C. Avoid freeze-thaw cycles.
Clonality	Polyclonal
Preservative	0.02% Sodium Azide
Isotype	IgG
Purity	Immunogen affinity purified
Buffer	Tris saline (20 mM Tris pH 7.3, 150 mM NaCl), 0.5% BSA

Product Description	
Host	Goat
Gene ID	1179
Gene Symbol	CLCA1
Species	Human, Mouse
Reactivity Notes	Mouse reactivity reported in scientific literature (PMID: 18314541).
Specificity/Sensitivity	No cross-reactivity expected with CLCA2 and 3.
Immunogen	Peptide with sequence C-TVTSKTNKDTSK corresponding to internal region according to NP_001276.1.

Product Application Details	
Applications	Western Blot, Peptide ELISA
Recommended Dilutions	Western Blot 1 - 3 ug/ml, Peptide ELISA Detection limit 1:16000
Application Notes	WB: Experiments gave bands at approx. 80 kDa band and 30 kDa band in human duodenum lysates. These bands correspond to earlier findings in scientific literature with different antibodies (Gruber et al, Genomics. 1998 Dec 1;54(2): 200-14.). This protein has a calculated MW of 100 kDa band according to NP_001276.1.

Images

Western Blot: CLCA1 Antibody [NB100-1791] (1ug/ml) staining of Human Duodenum lysate (35ug protein in RIPA buffer). Primary incubation was 1 hour. Detected by chemiluminescence.



Publications

Park J, Fang S, Crews AL et al. MARCKS regulation of mucin secretion by airway epithelium in vitro: interaction with chaperones. *Am J Respir Cell Mol Biol.* 2008-07-01 [PMID: 18314541] (WB, Mouse)

Details:

WB (mouse NHBE cells), Fig. 2C.





Novus Biologicals USA

10730 E. Briarwood Avenue
Centennial, CO 80112
USA
Phone: 303.730.1950
Toll Free: 1.888.506.6887
Fax: 303.730.1966
nb-customerservice@bio-techne.com

Bio-Techne Canada

21 Canmotor Ave
Toronto, ON M8Z 4E6
Canada
Phone: 905.827.6400
Toll Free: 855.668.8722
Fax: 905.827.6402
canada.inquires@bio-techne.com

Bio-Techne Ltd

19 Barton Lane
Abingdon Science Park
Abingdon, OX14 3NB, United Kingdom
Phone: (44) (0) 1235 529449
Free Phone: 0800 37 34 15
Fax: (44) (0) 1235 533420
info.EMEA@bio-techne.com

General Contact Information

www.novusbio.com
Technical Support: nb-technical@bio-techne.com
Orders: nb-customerservice@bio-techne.com
General: novus@novusbio.com

Products Related to NB100-1791

NB820-59231	Human Kidney Whole Tissue Lysate (Adult Whole Normal)
HAF017	Rabbit anti-Goat IgG Secondary Antibody [HRP (Horseradish Peroxidase)]
HAF109	Donkey anti-Goat IgG Secondary Antibody [HRP (Horseradish Peroxidase)]
NB410-28088-1mg	Goat IgG Isotype Control

Limitations

This product is for research use only and is not approved for use in humans or in clinical diagnosis. Primary Antibodies are guaranteed for 1 year from date of receipt.

For more information on our 100% guarantee, please visit www.novusbio.com/guarantee

Earn gift cards/discounts by submitting a review: www.novusbio.com/reviews/submit/NB100-1791

Earn gift cards/discounts by submitting a publication using this product:
www.novusbio.com/publications



