

# Product Datasheet

## Cathepsin L Antibody (33/2)

### NB100-1775

Unit Size: 0.1 ml

Store at 4C short term. Aliquot and store at -20C long term. Avoid freeze-thaw cycles.

[www.novusbio.com](http://www.novusbio.com)



[technical@novusbio.com](mailto:technical@novusbio.com)

#### Publications: 7

Protocols, Publications, Related Products, Reviews, Research Tools and Images at:  
[www.novusbio.com/NB100-1775](http://www.novusbio.com/NB100-1775)

Updated 5/23/2024 v.20.1

Earn rewards for product  
reviews and publications.

Submit a publication at [www.novusbio.com/publications](http://www.novusbio.com/publications)

Submit a review at [www.novusbio.com/reviews/destination/NB100-1775](http://www.novusbio.com/reviews/destination/NB100-1775)

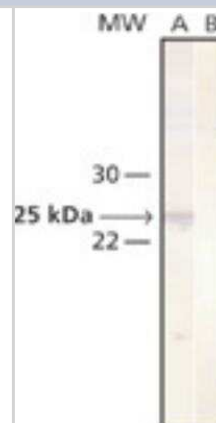


**NB100-1775****Cathepsin L Antibody (33/2)**

<b>Product Information</b>	
<b>Unit Size</b>	0.1 ml
<b>Concentration</b>	This product is unpurified. The exact concentration of antibody is not quantifiable.
<b>Storage</b>	Store at 4C short term. Aliquot and store at -20C long term. Avoid freeze-thaw cycles.
<b>Clonality</b>	Monoclonal
<b>Clone</b>	33/2
<b>Preservative</b>	0.9% Sodium Azide
<b>Isotype</b>	IgG1
<b>Purity</b>	Unpurified
<b>Buffer</b>	Ascites
<b>Product Description</b>	
<b>Host</b>	Mouse
<b>Gene ID</b>	1514
<b>Gene Symbol</b>	CTSL
<b>Species</b>	Human, Mouse, Rat, Mustelid
<b>Reactivity Notes</b>	Cross-reacts with Mouse procathepsin L (weak), Rat cathepsin L (strong), and Mink cathepsin and procathepsin L. Does not cross-react with human cathepsin types B, D, H and S, procathepsins B and D, rat cathepsin B, and mouse procathepsins B and D. Please note that this antibody is reactive to Mouse and derived from the same host, Mouse. Additional Mouse on Mouse blocking steps may be required for IHC and ICC experiments. Please contact Technical Support for more information.
<b>Specificity/Sensitivity</b>	Reacts specifically with native and denatured forms of human cathepsin L and procathepsin L. Recognizes an epitope within amino acid residues GYGFEST (265-271 in procathepsin L and 169-175 in the mature cathepsin L molecule). The antibody may be used for the suppression of the malignant growth of myeloma cells. Cross-reactivity is observed with rat cathepsin L (strong), mouse procathepsin L (weak) and mink cathepsin and procathepsin L. Does not cross-react with human cathepsin types B, D, H and S, procathepsins B and D, rat cathepsin B, and mouse procathepsins B and D.
<b>Immunogen</b>	Purified full length native protein (Human lung cancer line EPLC 32 M1).
<b>Product Application Details</b>	
<b>Applications</b>	Western Blot, ELISA, Immunocytochemistry/ Immunofluorescence, Immunohistochemistry, Immunohistochemistry-Frozen, Microarray
<b>Recommended Dilutions</b>	Western Blot 1:200, ELISA 1:100-1:2000, Immunohistochemistry 1:10-1:500, Immunocytochemistry/ Immunofluorescence, Immunohistochemistry-Frozen 1:10-1:500, Microarray
<b>Application Notes</b>	The antibody may be used for the suppression of the malignant growth of myeloma cells. Immunocytochemistry/Immunofluorescence was reported in scientific literature.

## Images

Western Blot: Cathepsin L Antibody (33/2) [NB100-1775] - Whole cell extract of Mv 1 Lu cultured mink lung was separated on SDS-PAGE and blotted with Monoclonal Anti-Cathepsin L. The antibody was developed with Goat Anti-Mouse IgG (Fab), AlkPhos Conjugate and NBT/BCIP substrate. Lane A: Antibody dilution 1:400. Lane B: Negative control (only secondary antibody).



## Publications

Cason SE, Mogre SS, Holzbaur ELF, Koslover EF. Spatiotemporal analysis of axonal autophagosome-lysosome dynamics reveals limited fusion events and slow maturation *Molecular Biology of the Cell* 2022-11-01 [PMID: 36044338]

Hossain MI, Marcus JM, Lee JH et al. Restoration of CTSD (cathepsin D) and lysosomal function in stroke is neuroprotective *Autophagy* 2020-05-25 [PMID: 32450052] (WB, Mouse)

Capoccia BJ, Jin RU, Kong YY et al. The ubiquitin ligase Mindbomb 1 coordinates gastrointestinal secretory cell maturation *J Clin Invest* 2013-04-01 [PMID: 23478405] (ICC/IF, Human, Mouse)

Garcia V, Kohen P, Maldonado C et al. Transient expression of progesterone receptor and cathepsin-I in human granulosa cells during the periovulatory period *Fertility and Sterility* 2012-03-12 [PMID: 22281037] (WB, Human)

Zheng X, Chu F, Chou PM et al. Cathepsin L inhibition suppresses drug resistance in vitro and in vivo: a putative mechanism. *Am J Physiol Cell Physiol* 2009-01-01 [PMID: 18971393]

Weber E et al. Monoclonal antibodies against cathepsin L procathepsin L of different species. *Hybridoma* 16:159-66. 1997-01-01 [PMID: 9145318]

Zheng, X et al. Senescence-initiated Reversal of Drug Resistance. *Cancer Res* 64: 1773-1780. 2004-03-01 [PMID: 14996739]



### **Novus Biologicals USA**

10730 E. Briarwood Avenue  
Centennial, CO 80112  
USA  
Phone: 303.730.1950  
Toll Free: 1.888.506.6887  
Fax: 303.730.1966  
nb-customerservice@bio-techne.com

### **Bio-Techne Canada**

21 Canmotor Ave  
Toronto, ON M8Z 4E6  
Canada  
Phone: 905.827.6400  
Toll Free: 855.668.8722  
Fax: 905.827.6402  
canada.inquires@bio-techne.com

### **Bio-Techne Ltd**

19 Barton Lane  
Abingdon Science Park  
Abingdon, OX14 3NB, United Kingdom  
Phone: (44) (0) 1235 529449  
Free Phone: 0800 37 34 15  
Fax: (44) (0) 1235 533420  
info.EMEA@bio-techne.com

### **General Contact Information**

www.novusbio.com  
Technical Support: nb-technical@bio-techne.com  
Orders: nb-customerservice@bio-techne.com  
General: novus@novusbio.com

### **Products Related to NB100-1775**

---

NBL1-09594	Cathepsin L Overexpression Lysate
HAF007	Goat anti-Mouse IgG Secondary Antibody [HRP]
NB720-B	Rabbit anti-Mouse IgG (H+L) Secondary Antibody [Biotin]
NBP1-97005-0.5mg	Mouse IgG1 Isotype Control (MG1)

---

### **Limitations**

This product is for research use only and is not approved for use in humans or in clinical diagnosis. Primary Antibodies are guaranteed for 1 year from date of receipt.

For more information on our 100% guarantee, please visit [www.novusbio.com/guarantee](http://www.novusbio.com/guarantee)

Earn gift cards/discounts by submitting a review: [www.novusbio.com/reviews/submit/NB100-1775](http://www.novusbio.com/reviews/submit/NB100-1775)

Earn gift cards/discounts by submitting a publication using this product:  
[www.novusbio.com/publications](http://www.novusbio.com/publications)

