

Product Datasheet

GFP Antibody [FITC] NB100-1771

Unit Size: 0.1 ml

Store at 4C short term. Aliquot and store at -20C long term. Avoid freeze-thaw cycles.

www.novusbio.com



technical@novusbio.com

Publications: 12

Protocols, Publications, Related Products, Reviews, Research Tools and Images at:
www.novusbio.com/NB100-1771

Updated 10/23/2024 v.20.1

**Earn rewards for product
reviews and publications.**

Submit a publication at www.novusbio.com/publications

Submit a review at www.novusbio.com/reviews/destination/NB100-1771



NB100-1771

GFP Antibody [FITC]

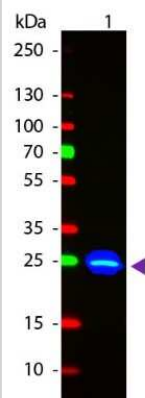
Product Information	
Unit Size	0.1 ml
Concentration	Please see the vial label for concentration. If unlisted please contact technical services.
Storage	Store at 4C short term. Aliquot and store at -20C long term. Avoid freeze-thaw cycles.
Clonality	Polyclonal
Preservative	0.01% Sodium Azide
Isotype	IgG
Conjugate	FITC
Purity	Immunogen affinity purified
Buffer	0.02 M Potassium Phosphate, 0.15 M Sodium Chloride, pH 7.2, 10 mg/mL Bovine Serum Albumin (BSA) - Immunoglobulin and Protease free

Product Description	
Description	For extended storage aliquot contents and freeze at -20C or below. Avoid cycles of freezing and thawing. Centrifuge product if not completely clear after standing at room GFP Fluorescein Conjugated Antibody was prepared from monospecific antiserum by immunoaffinity chromatography using Green Fluorescent Protein (<i>Aequorea victoria</i>) coupled to agarose beads followed by solid phase adsorption (s) to remove any unwanted reactivities. Assay by immunoelectrophoresis resulted in a single precipitin arc against anti-Goat Serum, anti-Fluorescein and purified and partially purified Green Fluorescent Protein (<i>Aequorea victoria</i>)
Host	Goat
Species	Non-species specific
Reactivity Notes	No reaction was observed against Human, or Rat serum proteins. Known Cross Reactivity: rGFP. YFP differs from GFP due to a mutation at Thr203Tyr; antibodies raised against full-length GFP should also detect YFP and other variants. Reactivity in transgenic mice with GFP. Reactivity in human cell lines transfected with a GFP construct.
Specificity/Sensitivity	No reaction was observed against Human, Mouse and Rat Serum Proteins.
Immunogen	The immunogen is a Green Fluorescent Protein (GFP) fusion protein corresponding to the full length amino acid sequence (246aa) derived from the jellyfish <i>Aequorea victoria</i> . (Uniprot: P42212)

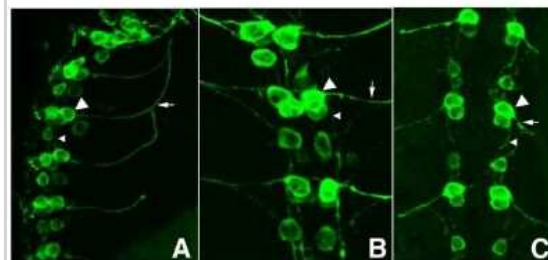
Product Application Details	
Applications	Western Blot, Dot Blot, Fluorophore-linked immunosorbent assay, Flow Cytometry, Immunocytochemistry/ Immunofluorescence, Immunohistochemistry, Immunohistochemistry-Frozen, Proximity Ligation Assay, Knockdown Validated, Knockout Validated
Recommended Dilutions	Western Blot >1:10000, Flow Cytometry 1:10-1:1000, Immunohistochemistry, Immunocytochemistry/ Immunofluorescence 1:500-1:2500, Immunohistochemistry-Frozen, Proximity Ligation Assay, Dot Blot, Fluorophore-linked immunosorbent assay >1:20000, Knockout Validated, Knockdown Validated
Application Notes	Suitable for immunomicroscopy and flow cytometry or FACS analysis as well as other antibody based fluorescent assays requiring lot-to-lot consistency.

Images

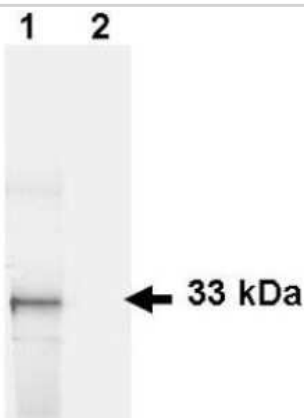
Western Blot of GFP antibody [FITC]. Lane 1: GFP. Lane 2: None. Load: 50 ng per lane. Primary antibody: None. Secondary antibody: Fluorescein goat secondary antibody at 1:1,000 for 60 min at RT. Block for 30 min at RT. Predicted/Observed size: 28 kDa, 33 kDa for GFP. Other band(s): None.



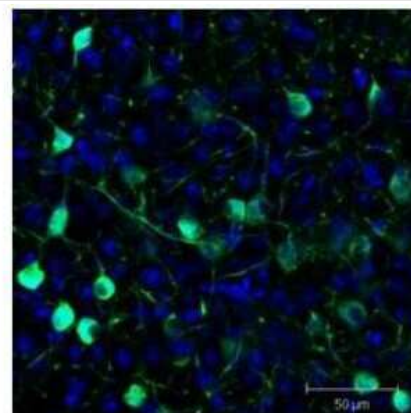
Tissue: *Drosophila melanogaster* late stage embryonic central nervous system. Fixation: 0.5% PFA. Antigen retrieval: not required. Primary antibody: anti-GFP antibody at a 1:1,000 for 1 h at RT. Secondary antibody: AlexaFluor 488 conjugated anti-Goat antibody at 1:300 for 45 min at RT. Panel A: shows a lateral view (ventral left). Panels B and C: shows ventral views of whole mount embryos at 63x magnification (plus 2x digital zoom). In all panels, anterior is up. Staining: tau-GFP cell bodies (large arrowhead) and axons of motoneurons (arrow) and interneurons (small arrowhead) as green fluorescent signal.



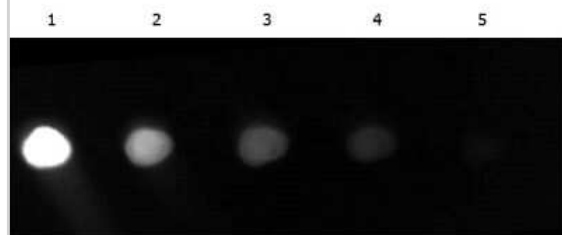
Lane 1: HeLa cells. Lane 2: mock transfected HeLa cell lysate. Load: 35 ug per lane. Primary antibody: GFP antibody at 1 ug/ml for 1 h at room temperature. Secondary antibody: IRDye 800 conjugated Donkey-a-Goat IgG [H&L] MX7 secondary antibody at 1:2,500 for 45 min at RT. Block: 5% BLOTTO overnight at 4C. Predicted/Observed size: 27 kDa, 33 kDa for GFP. Other band(s): none.



Tissue: Sf-1:Cre mice crossed to the Z/EG reporter line. Mouse brain (coronal view, 20X magnification). Fixation: 4%PFA/PBS with o/n fixation, and subsequently transferred to a 30% sucrose solution. Antigen retrieval: frozen in OCT freezing medium (Sakura) and cryostat sectioned at 40 microns. Primary antibody: Goat anti-GFP was used at 1:500 dilution in free floating immunohistochemistry to detect GFP. Secondary antibody: Fluorochrome conjugated Anti-goat IgG secondary antibody was used for detection at 1:500 at 1:10,000 for 45 min at RT. Localization: Sf-1+ neurons and their processes of the ventromedial nucleus of the hypothalamus. Staining: eGFP as green fluorescent signal and sections were counterstained with DAPI.



Dot Blot Analysis Using GFP Antibody



Publications

EIAli A, Menet R, Bernard M et al. Myeloid dickkopf-1 fuels neurovascular and neuroimmune alterations in ischemic stroke Research Square 2023-08-14 (Immunohistochemistry Free-Floating)

Choi I; Wang M; Yoo S et al. Autophagy enables microglia to engage amyloid plaques and prevents microglial senescence Nature cell biology 2023-05-25 [PMID: 37231161]

Fakhiri J, Schneider MA, Puschhof J et al. Novel Chimeric Gene Therapy Vectors Based on Adeno-Associated Virus and Four Different Mammalian Bocaviruses Mol Ther Methods Clin Dev 2019-02-16 [PMID: 30766894] (FLOW)

Chaudhuri D, Artiga DJ, Abiria SA et al. Mitochondrial calcium uniporter regulator 1 (MCUR1) regulates the calcium threshold for the mitochondrial permeability transition Proc Natl Acad Sci U S A 2016-03-16 [PMID: 26976564] (IF/IHC)

Doerner JF, Delling M, Clapham DE. Ion channels and calcium signaling in motile cilia Elife 2015-12-10 [PMID: 26650848] (IHC-Fr)

Ntokou A, Klein F, Dontireddy D et al. Characterization of the platelet-derived growth factor receptor-alpha-positive cell lineage during murine late lung development. Am J Physiol Lung Cell Mol Physiol 2015-11-01 [PMID: 26320158] (IHC-Fr)

Dontireddy DA. Identification of pulmonary PDGFRalpha-positive fibroblast specific miRNA and mRNA expression profiles during postnatal lung development Thesis 2015-01-01 (ICC/IF, Mouse)

Hauser J, Grundstrom C, Grundstrom T. Allelic Exclusion of IgH through Inhibition of E2A in a VDJ Recombination Complex J Immunol 2014-02-24 [PMID: 24470503] (PLA)

Details:

This citation used the FITC version of this antibody.

Freeman K, Tao W, Sun H et al. In situ three-dimensional reconstruction of mouse heart sympathetic innervation by two-photon excitation fluorescence imaging J Neurosci Methods 2013-09-19 [PMID: 24056230] (IHC-Fr, ICC/IF)

Details:

This citation used the FITC version of this antibody.

Lampron A, Pimentel-Coelho PM, Rivest S. Migration of bone marrow-derived cells into the CNS in models of neurodegeneration J Comp Neurol 2013-05-16 [PMID: 23682015] (FLOW)

Details:

This citation used the FITC version of this antibody.

Yee, Min et al. Type II epithelial cells are critical target for hyperoxia-mediated impairment of postnatal lung development. Am J Physiol Lung Cell Mol Physiol 291: L1101-L1111. 2006-01-01 [PMID: 16861382]

Hauser J, Sveshnikova N, Wallenius A et al. B-cell receptor activation inhibits AID expression through calmodulin inhibition of E-proteins PNAS 2008-01-01 [PMID: 18203819]

Details:

This citation used the FITC version of this antibody.





Novus Biologicals USA

10730 E. Briarwood Avenue
Centennial, CO 80112
USA
Phone: 303.730.1950
Toll Free: 1.888.506.6887
Fax: 303.730.1966
nb-customerservice@bio-techne.com

Bio-Techne Canada

21 Canmotor Ave
Toronto, ON M8Z 4E6
Canada
Phone: 905.827.6400
Toll Free: 855.668.8722
Fax: 905.827.6402
canada.inquires@bio-techne.com

Bio-Techne Ltd

19 Barton Lane
Abingdon Science Park
Abingdon, OX14 3NB, United Kingdom
Phone: (44) (0) 1235 529449
Free Phone: 0800 37 34 15
Fax: (44) (0) 1235 533420
info.EMEA@bio-techne.com

General Contact Information

www.novusbio.com
Technical Support: nb-technical@bio-techne.com
Orders: nb-customerservice@bio-techne.com
General: novus@novusbio.com

Products Related to NB100-1771

NB410-28088F-500ul	Goat IgG Isotype Control [FITC]
NB100-56401PEP	GFP Antibody Blocking Peptide
NBC1-22949	Recombinant GFP Protein

Limitations

This product is for research use only and is not approved for use in humans or in clinical diagnosis. Primary Antibodies are guaranteed for 1 year from date of receipt.

For more information on our 100% guarantee, please visit www.novusbio.com/guarantee

Earn gift cards/discounts by submitting a review: www.novusbio.com/reviews/submit/NB100-1771

Earn gift cards/discounts by submitting a publication using this product:
www.novusbio.com/publications

