

Product Datasheet

ErbB2/Her2 Antibody NB100-1710

Unit Size: 0.1 ml

Store at 4C. Do not freeze.

www.novusbio.com



technical@novusbio.com

Publications: 1

Protocols, Publications, Related Products, Reviews, Research Tools and Images at:
www.novusbio.com/NB100-1710

Updated 10/23/2024 v.20.1

Earn rewards for product
reviews and publications.

Submit a publication at www.novusbio.com/publications

Submit a review at www.novusbio.com/reviews/destination/NB100-1710



NB100-1710

ErbB2/Her2 Antibody

Product Information	
Unit Size	0.1 ml
Concentration	0.2 mg/ml
Storage	Store at 4C. Do not freeze.
Clonality	Polyclonal
Preservative	0.09% Sodium Azide
Isotype	IgG
Purity	Immunogen affinity purified
Buffer	TBS and 0.1% BSA

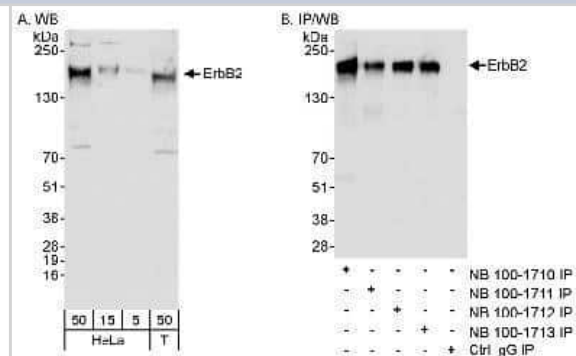
Product Description	
Host	Rabbit
Gene ID	2064
Gene Symbol	ERBB2
Species	Human
Immunogen	The immunogen recognized by this antibody maps to a region between residues 975 and 1025 of human v-erb-b2 erythroblastic leukemia viral oncogene homolog 2 using the numbering given in entry NP_004439.2 (GenelD 2064).

Product Application Details	
Applications	Western Blot, Immunohistochemistry, Immunohistochemistry-Paraffin, Immunoprecipitation
Recommended Dilutions	Western Blot 1:2000-1:10000, Immunohistochemistry 1:100-1:500, Immunoprecipitation 1-4 ug/mg of lysate, Immunohistochemistry-Paraffin 1:100-1:500
Application Notes	Epitope retrieval with Tris-EDTA pH9.0 is recommended for FFPE tissue sections.

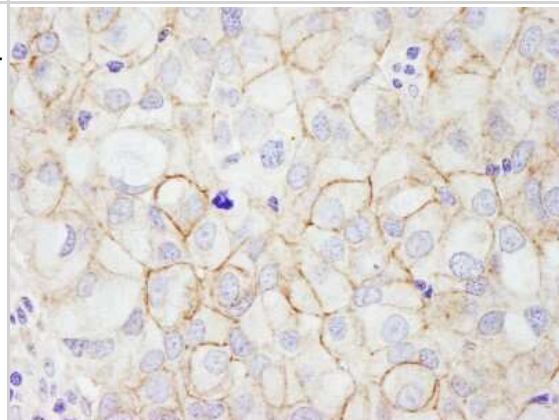


Images

Western Blot: ErbB2/Her2 Antibody [NB100-1710] - Detection of Human ErbB2 on HeLa whole cell lysate using NB100-1710. ErbB2 was also immunoprecipitated using rabbit anti-ErbB2 antibodies NB100-1711 and NB100-1712.



Immunohistochemistry-Paraffin: ErbB2/Her2 Antibody [NB100-1710] - Section of human breast carcinoma. Antibody: Affinity purified rabbit anti-ErbB2 used at a dilution of 1:200 (1ug/ml). Detection: DAB



Publications

Rayner K, Chen YX, Hibbert B, White D, Miller H, Postel EH, O'Brien ER. NM23-H2, an estrogen receptor beta-associated protein, shows diminished expression with progression of atherosclerosis. *Am J Physiol Regul Integr Comp Physiol*;292(2):R743-50. 2007-02-01 [PMID: 17272673]



Novus Biologicals USA

10730 E. Briarwood Avenue
Centennial, CO 80112
USA
Phone: 303.730.1950
Toll Free: 1.888.506.6887
Fax: 303.730.1966
nb-customerservice@bio-techne.com

Bio-Techne Canada

21 Canmotor Ave
Toronto, ON M8Z 4E6
Canada
Phone: 905.827.6400
Toll Free: 855.668.8722
Fax: 905.827.6402
canada.inquires@bio-techne.com

Bio-Techne Ltd

19 Barton Lane
Abingdon Science Park
Abingdon, OX14 3NB, United Kingdom
Phone: (44) (0) 1235 529449
Free Phone: 0800 37 34 15
Fax: (44) (0) 1235 533420
info.EMEA@bio-techne.com

General Contact Information

www.novusbio.com
Technical Support: nb-technical@bio-techne.com
Orders: nb-customerservice@bio-techne.com
General: novus@novusbio.com

Products Related to NB100-1710

NBL1-10314	ErbB2/Her2 Overexpression Lysate
HAF008	Goat anti-Rabbit IgG Secondary Antibody [HRP]
NB7160	Goat anti-Rabbit IgG (H+L) Secondary Antibody [HRP]
NBP2-24891	Rabbit IgG Isotype Control

Limitations

This product is for research use only and is not approved for use in humans or in clinical diagnosis. Primary Antibodies are guaranteed for 1 year from date of receipt.

For more information on our 100% guarantee, please visit www.novusbio.com/guarantee

Earn gift cards/discounts by submitting a review: www.novusbio.com/reviews/submit/NB100-1710

Earn gift cards/discounts by submitting a publication using this product:
www.novusbio.com/publications

