

Product Datasheet

NEDD9/CASL/HEF1 Antibody (2G9) - (82-398 aa) - BSA Free NB100-1699

Unit Size: 0.1 mg

Store at -20C short term. Aliquot and store at -80C long term. Avoid freeze-thaw cycles.

www.novusbio.com



technical@novusbio.com

Publications: 3

Protocols, Publications, Related Products, Reviews, Research Tools and Images at:
www.novusbio.com/NB100-1699

Updated 2/21/2025 v.20.1

**Earn rewards for product
reviews and publications.**

Submit a publication at www.novusbio.com/publications

Submit a review at www.novusbio.com/reviews/destination/NB100-1699



NB100-1699

NEDD9/CASL/HEF1 Antibody (2G9) - (82-398 aa) - BSA Free

Product Information	
Unit Size	0.1 mg
Concentration	Please see the vial label for concentration. If unlisted please contact technical services.
Storage	Store at -20C short term. Aliquot and store at -80C long term. Avoid freeze-thaw cycles.
Clonality	Monoclonal
Clone	2G9
Preservative	0.01% Sodium Azide
Isotype	IgG1 Kappa
Purity	Protein A purified
Buffer	0.02 M Potassium Phosphate, 0.15 M Sodium Chloride, pH 7.2

Product Description	
Description	<p>This Protein A purified antibody is directed against human NEDD9/CASL/HEF1 protein. The product was purified from tissue culture supernatant by chromatography</p> <p>Store vial at -20C prior to opening. Aliquot contents and freeze at -20C or below for extended storage. Avoid cycles of freezing and thawing. Centrifuge product if not completely clear after standing at room temperature. This product is stable for several weeks at 4C as an undiluted liquid. Dilute only prior to immediate use.</p>
Host	Mouse
Gene ID	4739
Gene Symbol	NEDD9
Species	Human, Mouse, Rat
Reactivity Notes	Reactivity against homologues from other sources is not known
Specificity/Sensitivity	This Protein A purified antibody is directed against human HEF1 protein. Reactivity occurs against human, mouse and rat forms of the protein. Reactivity against multiple isoforms is expected. Reactivity against homologues from other sources is not known. Specificity was determined by partial epitope mapping.
Immunogen	NEDD9/CASL/HEF1 Antibody (2G9) was produced by repeated immunizations with a synthetic peptide corresponding to amino acid residues 82-398 of human NEDD9/CASL/HEF1 protein (hNEDD9/CASL/HEF1, 843 aa, predicted MW 92.8 kDa). (Uniprot: Q14511)

Product Application Details	
Applications	Western Blot, ELISA, Immunocytochemistry/ Immunofluorescence, Immunohistochemistry, Immunohistochemistry-Paraffin, Immunoprecipitation
Recommended Dilutions	Western Blot 1:5000, ELISA 1:5000-1:20000, Immunohistochemistry 1:10-1:500, Immunocytochemistry/ Immunofluorescence 1:500, Immunoprecipitation 1:1000, Immunohistochemistry-Paraffin 1:200-1:500

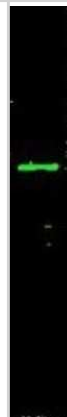
Application Notes

This monoclonal antibody has been tested for use in western blotting, immunoprecipitation and immunofluorescence. Specific conditions for reactivity should be optimized by the end user. Expect bands approximately 115 and 105 in size corresponding to isoforms of HEF1 protein by western blotting in the appropriate cell lysate or extract. This antibody does not recognize p130Cas. Sin1 has not been tested. IF was performed using 4% PFA fixed cells. This monoclonal antibody mostly detects HEF1 localized at the focal adhesion sites.

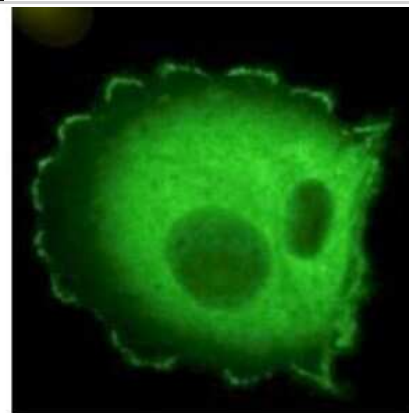


Images

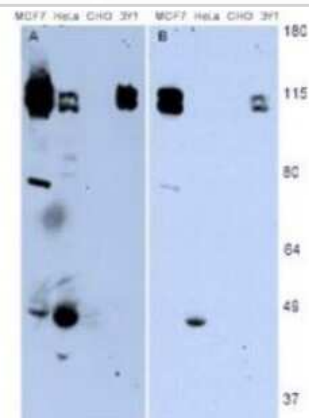
Western Blot: NEDD9/CASL/HEF1 Antibody (2G9) - (82-398 aa) [NB100-1699] - Detection of a 115 kDa band corresponding to HEF1 in MCF7 lysate (arrowhead). Approximately 35 μ g of lysate was loaded for SDS-PAGE followed by transfer onto nitrocellulose and reaction with a 1:1,000 dilution of anti-HEF1 antibody. Detection occurred using a 1:5,000 dilution of IRDye800 conjugated Sh-a-Mouse IgG [H&L] for 45 min at room temperature (800 nm channel, green). Molecular weight estimation was made by comparison to prestained MW markers (indicated at left). IRDye800 fluorescence image was captured using the Odyssey Infrared Imaging System developed by LI-COR. IRDye is a trademark of LI-COR, Inc. Other detection systems will yield similar results.



Immunocytochemistry/Immunofluorescence: NEDD9/CASL/HEF1 Antibody (2G9) - (82-398 aa) [NB100-1699] - Detection of HEF1 localized at focal adhesion sites. The antibody was used at a 1:500 dilution with a 3-sec exposure time.



Western Blot: NEDD9/CASL/HEF1 Antibody (2G9) - (82-398 aa) [NB100-1699] - Detection of endogenous HEF1 present in various cell lines. Panel A shows detection using a 15 min exposure. Panel B is the same blot exposed for 2 min. The doublet represents p105 and p115 staining. The lower MW band represents p55. 3Y1 cells are derived from rat fibroblast cells. Mouse 3T3 cells are also reactive (not shown). To date no staining has been noted on CHO cells.



Western blot using monoclonal anti-HEF1 antibody (clone 2G9) antibody shows detection of a ~92 kDa band corresponding to HEF1 in MCF7 lysate



Publications

Santos LC, Blair DA, Kumari S et al. Actin polymerization-dependent activation of Cas-L promotes immunological synapse stability. *Immunol Cell Biol.* 2016-11-01 [PMID: 27359298] (ICC/IF, Mouse)

Lim ST, Chen XL, Tomar A et al. Knock-in mutation reveals an essential role for focal adhesion kinase activity in blood vessel morphogenesis and cell motility-polarity but not cell proliferation. *J Biol Chem* 2010-07-09 [PMID: 20442405] (WB, Mouse)

Pugacheva EN, Golemis EA, et al. The focal adhesion scaffolding protein HEF1 regulates activation of the Aurora-A and Nek2 kinases at the centrosome. *Nat Cell Biol* 2005-10-01 [PMID: 16184168]





Novus Biologicals USA

10730 E. Briarwood Avenue
Centennial, CO 80112
USA
Phone: 303.730.1950
Toll Free: 1.888.506.6887
Fax: 303.730.1966
nb-customerservice@bio-techne.com

Bio-Techne Canada

21 Canmotor Ave
Toronto, ON M8Z 4E6
Canada
Phone: 905.827.6400
Toll Free: 855.668.8722
Fax: 905.827.6402
canada.inquires@bio-techne.com

Bio-Techne Ltd

19 Barton Lane
Abingdon Science Park
Abingdon, OX14 3NB, United Kingdom
Phone: (44) (0) 1235 529449
Free Phone: 0800 37 34 15
Fax: (44) (0) 1235 533420
info.EMEA@bio-techne.com

General Contact Information

www.novusbio.com
Technical Support: nb-technical@bio-techne.com
Orders: nb-customerservice@bio-techne.com
General: novus@novusbio.com

Products Related to NB100-1699

HAF007	Goat anti-Mouse IgG Secondary Antibody [HRP]
NB720-B	Rabbit anti-Mouse IgG (H+L) Secondary Antibody [Biotin]
NBP1-43319-0.5mg	Mouse IgG1 Kappa Isotype Control (P3.6.2.8.1)
NB100-1699FR	NEDD9/CASL/HEF1 Antibody (2G9) [DyLight 680]

Limitations

This product is for research use only and is not approved for use in humans or in clinical diagnosis. Primary Antibodies are guaranteed for 1 year from date of receipt.

For more information on our 100% guarantee, please visit www.novusbio.com/guarantee

Earn gift cards/discounts by submitting a review: www.novusbio.com/reviews/submit/NB100-1699

Earn gift cards/discounts by submitting a publication using this product:
www.novusbio.com/publications

