

Product Datasheet

LXR alpha/beta Antibody NB100-1465

Unit Size: 0.1 mg

Store at -20C. Avoid freeze-thaw cycles.

www.novusbio.com



technical@novusbio.com

Publications: 4

Protocols, Publications, Related Products, Reviews, Research Tools and Images at:
www.novusbio.com/NB100-1465

Updated 9/9/2025 v.20.1

Earn rewards for product
reviews and publications.

Submit a publication at www.novusbio.com/publications

Submit a review at www.novusbio.com/reviews/destination/NB100-1465



NB100-1465

LXR alpha/beta Antibody

Product Information	
Unit Size	0.1 mg
Concentration	0.5 mg/ml
Storage	Store at -20C. Avoid freeze-thaw cycles.
Clonality	Polyclonal
Preservative	0.02% Sodium Azide
Isotype	IgG
Purity	Immunogen affinity purified
Buffer	Tris saline (20 mM Tris pH 7.3, 150 mM NaCl), 0.5% BSA

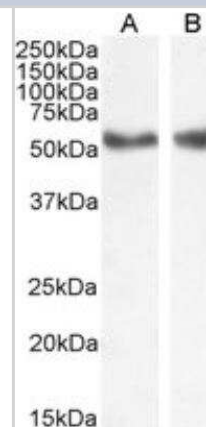
Product Description	
Description	Novus Biologicals Goat LXR alpha/beta Antibody (NB100-1465) is a polyclonal antibody validated for use in WB, ELISA, Flow and ICC/IF. Anti-LXR alpha/beta Antibody: Cited in 4 publications. All Novus Biologicals antibodies are covered by our 100% guarantee.
Host	Goat
Gene ID	10062
Gene Symbol	NR1H3
Species	Human, Mouse
Reactivity Notes	Use in Mouse reported in scientific literature (PMID:34564456). .
Specificity/Sensitivity	This antibody is expected to recognise an epitope corresponding to aa 429-442 of human LXR alpha protein (NP_005684.2) and to aa 443-456 of human LXR beta protein (NP_009052.3).
Immunogen	Peptide with sequence CRLQDKKLPPLLSEI corresponding to internal region according to NP_005684.2, NP_009052.3.

Product Application Details	
Applications	Western Blot, Flow Cytometry, Immunocytochemistry/ Immunofluorescence, Peptide ELISA
Recommended Dilutions	Western Blot 1 - 3 ug/mL, Flow Cytometry 10 ug/mL, Immunocytochemistry/ Immunofluorescence 10 ug/mL, Peptide ELISA Detection limit 1:32000
Application Notes	Western blot: Approx 55 kDa band observed in Human, Liver and Kidney lysates and in preliminary testing of Human Spleen lysate (calculated MW of 51.1 kDa according to NP_001238863.1). This band was successfully blocked by incubation with the immunizing peptide.

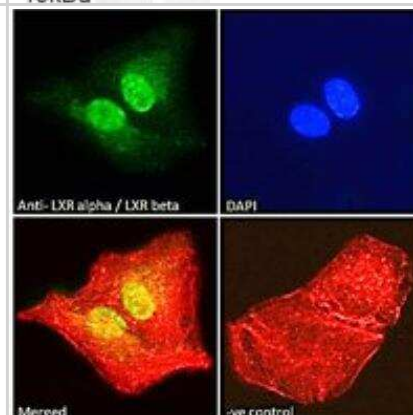


Images

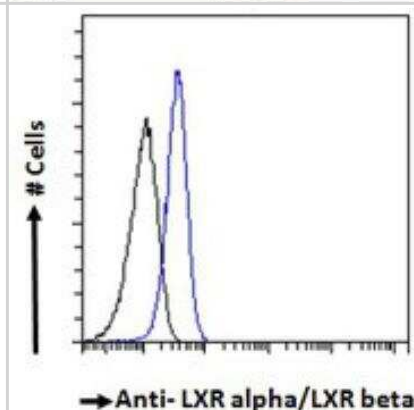
Western Blot: LXR alpha/beta Antibody [NB100-1465] - Staining of Human Liver (A) and Kidney (B) lysate (35 ug protein in RIPA buffer). Antibody at 1 ug/mL. Detected by chemiluminescence.



Immunocytochemistry/Immunofluorescence: LXR alpha/beta Antibody [NB100-1465] - Immunofluorescence analysis of paraformaldehyde fixed A549 cells, permeabilized with 0.15% Triton. Primary incubation 1hr (10ug/ml) followed by Alexa Fluor 488 secondary antibody (2 ug/mL), showing nuclear and weak cytoplasmic staining. Actin filaments were stained with phalloidin (red) and the nuclear stain is DAPI (blue). Negative control: Unimmunized goat IgG (10 ug/mL) followed by Alexa Fluor 488 secondary antibody (2 ug/mL).



Flow Cytometry: LXR alpha/beta Antibody [NB100-1465] - Flow cytometric analysis of paraformaldehyde fixed A549 cells (blue line), permeabilized with 0.5% Triton. Primary incubation 1hr (10 ug/mL) followed by Alexa Fluor 488 secondary antibody (1 ug/mL). IgG control: Unimmunized goat IgG (black line) followed by Alexa Fluor 488 secondary antibody.



Publications

Huang K, Jo H, Echesabal-Chen J, Stamatikos A Combined LXR and RXR Agonist Therapy Increases ABCA1 Protein Expression and Enhances ApoAI-Mediated Cholesterol Efflux in Cultured Endothelial Cells *Metabolites* 2021-09-18 [PMID: 34564456] (WB, Mouse)

Sharma B, Gupta V, Dahiya D et al. Clinical relevance of cholesterol homeostasis genes in colorectal cancer *Biochim Biophys Acta Mol Cell Biol Lipids* 2019-06-13 [PMID: 31202724] (WB, Human)

Tangirala RK, Bischoff ED, Joseph SB et al. Identification of macrophage liver X receptors as inhibitors of atherosclerosis. *Proc Natl Acad Sci U S A* 2002-09-03 [PMID: 12193651]

Scoles DR, Xu X, Wang H et al. Liver X receptor agonist inhibits proliferation of ovarian carcinoma cells stimulated by oxidized low density lipoprotein *Gynecol Oncol* 2010-01-01 [PMID: 19854496] (WB, Human)



Novus Biologicals USA

10730 E. Briarwood Avenue
Centennial, CO 80112
USA
Phone: 303.730.1950
Toll Free: 1.888.506.6887
Fax: 303.730.1966
nb-customerservice@bio-techne.com

Bio-Techne Canada

21 Canmotor Ave
Toronto, ON M8Z 4E6
Canada
Phone: 905.827.6400
Toll Free: 855.668.8722
Fax: 905.827.6402
canada.inquires@bio-techne.com

Bio-Techne Ltd

19 Barton Lane
Abingdon Science Park
Abingdon, OX14 3NB, United Kingdom
Phone: (44) (0) 1235 529449
Free Phone: 0800 37 34 15
Fax: (44) (0) 1235 533420
info.EMEA@bio-techne.com

General Contact Information

www.novusbio.com
Technical Support: nb-technical@bio-techne.com
Orders: nb-customerservice@bio-techne.com
General: novus@novusbio.com

Products Related to NB100-1465

NBL1-13768	LXR alpha/NR1H3 Overexpression Lysate
NBP2-33376H	Blue Marker Antibody (6F4-F6) [HRP]
HAF017	Rabbit anti-Goat IgG Secondary Antibody [HRP (Horseradish Peroxidase)]
HAF109	Donkey anti-Goat IgG Secondary Antibody [HRP (Horseradish Peroxidase)]
NB410-28088-1mg	Goat IgG Isotype Control

Limitations

This product is for research use only and is not approved for use in humans or in clinical diagnosis. Primary Antibodies are guaranteed for 1 year from date of receipt.

For more information on our 100% guarantee, please visit www.novusbio.com/guarantee

Earn gift cards/discounts by submitting a review: www.novusbio.com/reviews/submit/NB100-1465

Earn gift cards/discounts by submitting a publication using this product:
www.novusbio.com/publications



