

# Product Datasheet

## MEL-18 Antibody NB100-1240

Unit Size: 0.1 mg

Store at -20C. Avoid freeze-thaw cycles.

[www.novusbio.com](http://www.novusbio.com)



[technical@novusbio.com](mailto:technical@novusbio.com)

### Publications: 1

Protocols, Publications, Related Products, Reviews, Research Tools and Images at:  
[www.novusbio.com/NB100-1240](http://www.novusbio.com/NB100-1240)

Updated 9/9/2025 v.20.1

Earn rewards for product  
reviews and publications.

Submit a publication at [www.novusbio.com/publications](http://www.novusbio.com/publications)

Submit a review at [www.novusbio.com/reviews/destination/NB100-1240](http://www.novusbio.com/reviews/destination/NB100-1240)



**NB100-1240****MEL-18 Antibody**

| <b>Product Information</b> |  |
|----------------------------|--|
| <b>Unit Size</b>           | 0.1 mg   |
| <b>Concentration</b>       | 0.5 mg/ml  |
| <b>Storage</b>             | Store at -20C. Avoid freeze-thaw cycles.               |
| <b>Clonality</b>           | Polyclonal   |
| <b>Preservative</b>        | 0.02% Sodium Azide                                     |
| <b>Isotype</b>             | IgG  |
| <b>Purity</b>              | Immunogen affinity purified                            |
| <b>Buffer</b>              | Tris saline (20 mM Tris pH 7.3, 150 mM NaCl), 0.5% BSA |

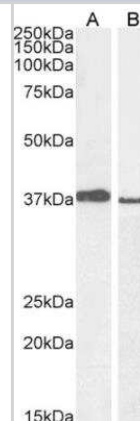
| <b>Product Description</b> |   |
|----------------------------|---|
| <b>Description</b>         | Novus Biologicals Goat MEL-18 Antibody (NB100-1240) is a polyclonal antibody validated for use in WB and ELISA. Anti-MEL-18 Antibody: Cited in 1 publication. All Novus Biologicals antibodies are covered by our 100% guarantee. |
| <b>Host</b>                | Goat  |
| <b>Gene ID</b>             | 7703  |
| <b>Gene Symbol</b>         | PCGF2   |
| <b>Species</b>             | Human   |
| <b>Immunogen</b>           | Peptide with sequence C-KMTVNGAPVPPLT corresponding to C-Terminus according to NP_009075.1.   |

| <b>Product Application Details</b> |   |
|------------------------------------|---|
| <b>Applications</b>                | Western Blot, Peptide ELISA   |
| <b>Recommended Dilutions</b>       | Western Blot 1 - 2 ug/ml, Peptide ELISA Detection limit 1:16000   |
| <b>Application Notes</b>           | WB: Approx. 40 kDa band observed in human lung lysates (calculated MW of 37.8 kDa band according to NP_009075.1). |

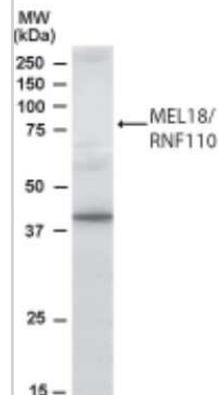


## Images

Western Blot: MEL-18 Antibody [NB100-1240] - A549 (A) and PD19 (B) cell lysate (RIPA buffer, 30ug total protein per lane). Detected by chemiluminescence.



Western Blot: MEL-18 Antibody [NB100-1240] - Analysis of MEL-18 in Human Lung lysate using this antibody at 1 ug/ ml.



## Publications

Ishida A, Asano H, Hasegawa M et al. Cloning and chromosome mapping of the human Mel-18 gene which encodes a DNA-binding protein with a new 'RING-finger' motif. Gene 1993-07-30 [PMID: 8325509]



### **Novus Biologicals USA**

10730 E. Briarwood Avenue  
Centennial, CO 80112  
USA  
Phone: 303.730.1950  
Toll Free: 1.888.506.6887  
Fax: 303.730.1966  
nb-customerservice@bio-techne.com

### **Bio-Techne Canada**

21 Canmotor Ave  
Toronto, ON M8Z 4E6  
Canada  
Phone: 905.827.6400  
Toll Free: 855.668.8722  
Fax: 905.827.6402  
canada.inquires@bio-techne.com

### **Bio-Techne Ltd**

19 Barton Lane  
Abingdon Science Park  
Abingdon, OX14 3NB, United Kingdom  
Phone: (44) (0) 1235 529449  
Free Phone: 0800 37 34 15  
Fax: (44) (0) 1235 533420  
info.EMEA@bio-techne.com

### **General Contact Information**

[www.novusbio.com](http://www.novusbio.com)  
Technical Support: nb-technical@bio-techne.com  
Orders: nb-customerservice@bio-techne.com  
General: novus@novusbio.com

### **Products Related to NB100-1240**

---

|                 |  |
|-----------------|--|
| NBL1-14174      | MEL-18 Overexpression Lysate   |
| HAF017          | Rabbit anti-Goat IgG Secondary Antibody [HRP (Horseradish Peroxidase)] |
| HAF109          | Donkey anti-Goat IgG Secondary Antibody [HRP (Horseradish Peroxidase)] |
| NB410-28088-1mg | Goat IgG Isotype Control   |

---

### **Limitations**

This product is for research use only and is not approved for use in humans or in clinical diagnosis. Primary Antibodies are guaranteed for 1 year from date of receipt.

For more information on our 100% guarantee, please visit [www.novusbio.com/guarantee](http://www.novusbio.com/guarantee)

Earn gift cards/discounts by submitting a review: [www.novusbio.com/reviews/submit/NB100-1240](http://www.novusbio.com/reviews/submit/NB100-1240)

Earn gift cards/discounts by submitting a publication using this product:  
[www.novusbio.com/publications](http://www.novusbio.com/publications)



