

# Product Datasheet

## HIF-1 alpha Antibody (H1alpha67) [Biotin] NB100-123B

Unit Size: 0.1 ml

Store at 4C in the dark.

[www.novusbio.com](http://www.novusbio.com)



[technical@novusbio.com](mailto:technical@novusbio.com)

Protocols, Publications, Related Products, Reviews, Research Tools and Images at:  
[www.novusbio.com/NB100-123B](http://www.novusbio.com/NB100-123B)

Updated 10/23/2024 v.20.1

Earn rewards for product  
reviews and publications.

Submit a publication at [www.novusbio.com/publications](http://www.novusbio.com/publications)

Submit a review at [www.novusbio.com/reviews/destination/NB100-123B](http://www.novusbio.com/reviews/destination/NB100-123B)



**NB100-123B**

HIF-1 alpha Antibody (H1alpha67) [Biotin]

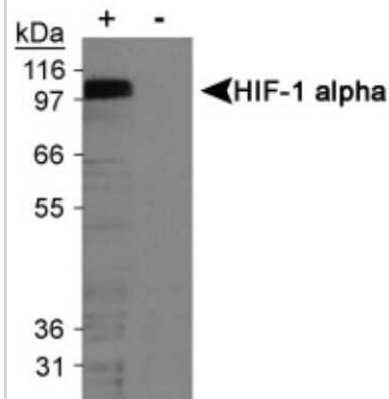
<b>Product Information</b>	
<b>Unit Size</b>	0.1 ml
<b>Concentration</b>	Please see the vial label for concentration. If unlisted please contact technical services.
<b>Storage</b>	Store at 4C in the dark.
<b>Clonality</b>	Monoclonal
<b>Clone</b>	H1alpha67
<b>Preservative</b>	0.05% Sodium Azide
<b>Isotype</b>	IgG2b
<b>Conjugate</b>	Biotin
<b>Purity</b>	Protein A purified
<b>Buffer</b>	PBS
<b>Target Molecular Weight</b>	93 kDa
<b>Product Description</b>	
<b>Host</b>	Mouse
<b>Gene ID</b>	3091
<b>Gene Symbol</b>	HIF1A
<b>Species</b>	Human, Mouse, Rat, Porcine, Avian, Bovine, Canine, Ferret, Primate, Rabbit, Sheep
<b>Reactivity Notes</b>	Please note that this antibody is reactive to Mouse and derived from the same host, Mouse. Additional Mouse on Mouse blocking steps may be required for IHC and ICC experiments. Please contact Technical Support for more information. Rabbit reactivity reported in scientific literature (PMID: 16738327, 26339038).
<b>Immunogen</b>	This HIF-1 alpha Antibody (H1alpha67) was developed against a fusion protein containing amino acids 432 - 528 of human HIF-1 alpha [Uniprot# Q16665].
<b>Product Application Details</b>	
<b>Applications</b>	Western Blot, Chromatin Immunoprecipitation, ELISA, Flow Cytometry, Gel Super Shift Assays, Immunoblotting, Immunocytochemistry/ Immunofluorescence, Immunohistochemistry, Immunohistochemistry-Paraffin, Immunoprecipitation, Chromatin Immunoprecipitation (ChIP), Knockdown Validated, Knockout Validated
<b>Recommended Dilutions</b>	Western Blot, Chromatin Immunoprecipitation, Flow Cytometry, ELISA, Immunohistochemistry, Immunocytochemistry/ Immunofluorescence, Immunoprecipitation, Immunohistochemistry-Paraffin, Immunoblotting, Gel Super Shift Assays, Chromatin Immunoprecipitation (ChIP), Knockout Validated, Knockdown Validated
<b>Application Notes</b>	Optimal dilution of this antibody should be experimentally determined.

## Images

Western Blot: HIF-1 alpha Antibody (H1alpha67) [Biotin] [NB100-123B] - On day 1, MEF cells (+/+, -/-), were grown on 15cm dish (2x10 to the 6th cells). On day 2, cells were exposed to hypoxia for 4hrs. Cells were washed with ice cold PBS twice and whole cell protein was extracted with RIPA buffer fortified with protease. Upon quantification, 100ug of protein was fractionated on 7% polyacrylamide gel. Gel was transferred overnight onto nitrocellulose membrane. The membrane was probed with HIF-1 alpha monoclonal antibody at a 1:500 dilution (NB100-123). The secondary antibody was conjugated with HRP and was used at a 1:2500 dilution. Photo courtesy of Dr. Gregg Semenza, Johns Hopkins University.



Western Blot: HIF-1 alpha Antibody (H1alpha67) [Biotin] [NB100-123B] - Detection of HIF-1 alpha in cobalt chloride treated/untreated COS-7 nuclear extracts.





### **Novus Biologicals USA**

10730 E. Briarwood Avenue  
Centennial, CO 80112  
USA  
Phone: 303.730.1950  
Toll Free: 1.888.506.6887  
Fax: 303.730.1966  
nb-customerservice@bio-techne.com

### **Bio-Techne Canada**

21 Canmotor Ave  
Toronto, ON M8Z 4E6  
Canada  
Phone: 905.827.6400  
Toll Free: 855.668.8722  
Fax: 905.827.6402  
canada.inquires@bio-techne.com

### **Bio-Techne Ltd**

19 Barton Lane  
Abingdon Science Park  
Abingdon, OX14 3NB, United Kingdom  
Phone: (44) (0) 1235 529449  
Free Phone: 0800 37 34 15  
Fax: (44) (0) 1235 533420  
info.EMEA@bio-techne.com

### **General Contact Information**

www.novusbio.com  
Technical Support: nb-technical@bio-techne.com  
Orders: nb-customerservice@bio-techne.com  
General: novus@novusbio.com

### **Products Related to NB100-123B**

---

NBP2-29370	Streptavidin Native Protein
NB800-PC26	COS-7 Nuclear Hypoxic Induced Cell Lysate
NBP2-27231B	Mouse IgG2b Isotype Control (MPC-11) [Biotin]
NB100-123H	HIF-1 alpha Antibody (H1alpha67) [HRP]

---

### **Limitations**

This product is for research use only and is not approved for use in humans or in clinical diagnosis. Primary Antibodies are guaranteed for 1 year from date of receipt.

For more information on our 100% guarantee, please visit [www.novusbio.com/guarantee](http://www.novusbio.com/guarantee)

Earn gift cards/discounts by submitting a review: [www.novusbio.com/reviews/submit/NB100-123B](http://www.novusbio.com/reviews/submit/NB100-123B)

Earn gift cards/discounts by submitting a publication using this product:  
[www.novusbio.com/publications](http://www.novusbio.com/publications)

