

Product Datasheet

HIF-2 alpha/EPAS1 Antibody [HRP] NB100-122H

Unit Size: 0.1 ml

Store at 4C in the dark.

www.novusbio.com



technical@novusbio.com

Protocols, Publications, Related Products, Reviews, Research Tools and Images at:
www.novusbio.com/NB100-122H

Updated 10/23/2024 v.20.1

Earn rewards for product
reviews and publications.

Submit a publication at www.novusbio.com/publications

Submit a review at www.novusbio.com/reviews/destination/NB100-122H



NB100-122H

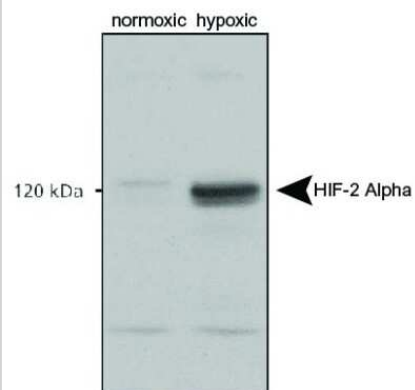
HIF-2 alpha/EPAS1 Antibody [HRP]

Product Information	
Unit Size	0.1 ml
Concentration	Please see the vial label for concentration. If unlisted please contact technical services.
Storage	Store at 4C in the dark.
Clonality	Polyclonal
Preservative	No Preservative
Isotype	IgG
Conjugate	HRP
Purity	Immunogen affinity purified
Buffer	PBS
Product Description	
Host	Rabbit
Gene ID	2034
Gene Symbol	EPAS1
Species	Human, Mouse, Rat, Fish, Hamster, Primate, Rabbit, Reptile, Sheep
Reactivity Notes	Use in Mouse reported in scientific literature (PMID:33758176).
Specificity/Sensitivity	This HIF-2 alpha/EPAS1 Antibody is specific for HIF-2 alpha/EPAS, and does not cross-react with HIF-1 alpha.
Immunogen	This HIF-2 alpha/EPAS1 Antibody was developed against a peptide derived from the C-terminus of mouse/human HIF-2 alpha protein.
Product Application Details	
Applications	Western Blot, Simple Western, ELISA, Flow Cytometry, Gel Super Shift Assays, Immunoblotting, Immunocytochemistry/ Immunofluorescence, Immunohistochemistry, Immunohistochemistry-Frozen, Immunohistochemistry-Paraffin, In vitro assay, Immunoprecipitation, SDS-Page, Chromatin Immunoprecipitation (ChIP), Dual RNAscope ISH-IHC, Knockdown Validated, Knockout Validated
Recommended Dilutions	Western Blot, Simple Western, Flow Cytometry, ELISA, Immunohistochemistry, Immunocytochemistry/ Immunofluorescence, Immunoprecipitation, Immunohistochemistry-Paraffin, Immunohistochemistry-Frozen, Immunoblotting, In vitro assay, Gel Super Shift Assays, SDS-Page, Chromatin Immunoprecipitation (ChIP), Knockout Validated, Knockdown Validated, Dual RNAscope ISH-IHC
Application Notes	Optimal dilution of this antibody should be experimentally determined.



Images

Analysis on normoxic and hypoxic nuclear rat cell lysates using NB100-122, HIF-2 alpha/EPAS1 Antibody.





Novus Biologicals USA

10730 E. Briarwood Avenue
Centennial, CO 80112
USA
Phone: 303.730.1950
Toll Free: 1.888.506.6887
Fax: 303.730.1966
nb-customerservice@bio-techne.com

Bio-Techne Canada

21 Canmotor Ave
Toronto, ON M8Z 4E6
Canada
Phone: 905.827.6400
Toll Free: 855.668.8722
Fax: 905.827.6402
canada.inquires@bio-techne.com

Bio-Techne Ltd

19 Barton Lane
Abingdon Science Park
Abingdon, OX14 3NB, United Kingdom
Phone: (44) (0) 1235 529449
Free Phone: 0800 37 34 15
Fax: (44) (0) 1235 533420
info.EMEA@bio-techne.com

General Contact Information

www.novusbio.com
Technical Support: nb-technical@bio-techne.com
Orders: nb-customerservice@bio-techne.com
General: novus@novusbio.com

Products Related to NB100-122H

NBP2-24891H	Rabbit IgG Isotype Control [HRP]
NB100-122G	HIF-2 alpha/EPAS1 Antibody [DyLight 488]
H00002034-P03-2ug	Recombinant Human HIF-2 alpha/EPAS1 GST (N-Term) Protein
DVE00	VEGF [HRP]

Limitations

This product is for research use only and is not approved for use in humans or in clinical diagnosis. Primary Antibodies are guaranteed for 1 year from date of receipt.

For more information on our 100% guarantee, please visit www.novusbio.com/guarantee

Earn gift cards/discounts by submitting a review: www.novusbio.com/reviews/submit/NB100-122H

Earn gift cards/discounts by submitting a publication using this product:
www.novusbio.com/publications

