

Product Datasheet

CHFR Antibody NB100-1166

Unit Size: 0.1 mg

Store at -20C. Avoid freeze-thaw cycles.

www.novusbio.com



technical@novusbio.com

Publications: 1

Protocols, Publications, Related Products, Reviews, Research Tools and Images at:
www.novusbio.com/NB100-1166

Updated 9/9/2025 v.20.1

Earn rewards for product
reviews and publications.

Submit a publication at www.novusbio.com/publications

Submit a review at www.novusbio.com/reviews/destination/NB100-1166



NB100-1166**CHFR Antibody****Product Information**

Unit Size	0.1 mg
Concentration	0.5 mg/ml
Storage	Store at -20C. Avoid freeze-thaw cycles.
Clonality	Polyclonal
Preservative	0.02% Sodium Azide
Isotype	IgG
Purity	Immunogen affinity purified
Buffer	Tris saline (20 mM Tris pH 7.3, 150 mM NaCl), 0.5% BSA

Product Description

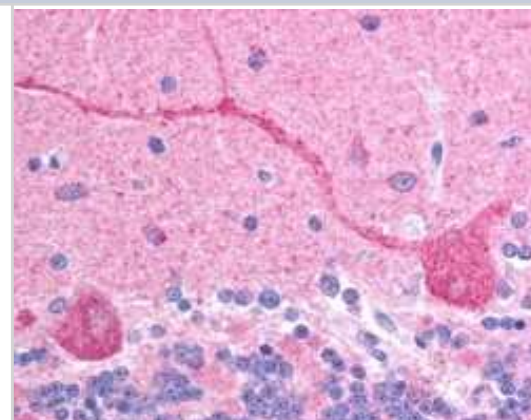
Description	Novus Biologicals Goat CHFR Antibody (NB100-1166) is a polyclonal antibody validated for use in IHC and ELISA. Anti-CHFR Antibody: Cited in 1 publication. All Novus Biologicals antibodies are covered by our 100% guarantee.
Host	Goat
Gene ID	55743
Gene Symbol	CHFR
Species	Human
Specificity/Sensitivity	This antibody is expected to recognise all reported isoforms.
Immunogen	Peptide with sequence KFNHICEQTRFKN corresponding to C-Terminus according to NP_001154817.1, NP_001154818.1, NP_060693.2, NP_001154819.1.

Product Application Details

Applications	Immunohistochemistry-Paraffin, Immunohistochemistry, Peptide ELISA
Recommended Dilutions	Immunohistochemistry 2.5 ug/ml, Immunohistochemistry-Paraffin 2.5 ug/ml, Peptide ELISA Detection limit 1:64000
Application Notes	WB: Preliminary experiments gave an approx. 80 kDa band in human brain lysates at 0.5 ug/ml, this band was successfully blocked by incubation with the immunizing peptide. Please note that currently we cannot find an explanation in scientific literature for the band we observe given the predicted MW of approx. 72 kDa according to NP_060693. IHC-P: Human brain (cerebellum) shows stained Purkinje cells.

Images

Immunohistochemistry-Paraffin: CHFR Antibody [NB100-1166] - IHC analysis of CHFR in paraffin-embedded Human Brain (Cerebellum) using this antibody at 2.5ug/ml. Steamed antigen retrieval with citrate buffer pH 6, AP-staining.



Publications

Scolnick DM, Halazonetis TD. Chfr defines a mitotic stress checkpoint that delays entry into metaphase. Nature 2000-07-27 [PMID: 10935642]





Novus Biologicals USA

10730 E. Briarwood Avenue
Centennial, CO 80112
USA
Phone: 303.730.1950
Toll Free: 1.888.506.6887
Fax: 303.730.1966
nb-customerservice@bio-techne.com

Bio-Techne Canada

21 Canmotor Ave
Toronto, ON M8Z 4E6
Canada
Phone: 905.827.6400
Toll Free: 855.668.8722
Fax: 905.827.6402
canada.inquires@bio-techne.com

Bio-Techne Ltd

19 Barton Lane
Abingdon Science Park
Abingdon, OX14 3NB, United Kingdom
Phone: (44) (0) 1235 529449
Free Phone: 0800 37 34 15
Fax: (44) (0) 1235 533420
info.EMEA@bio-techne.com

General Contact Information

www.novusbio.com
Technical Support: nb-technical@bio-techne.com
Orders: nb-customerservice@bio-techne.com
General: novus@novusbio.com

Products Related to NB100-1166

HAF017	Rabbit anti-Goat IgG Secondary Antibody [HRP (Horseradish Peroxidase)]
HAF109	Donkey anti-Goat IgG Secondary Antibody [HRP (Horseradish Peroxidase)]
NB410-28088-1mg	Goat IgG Isotype Control
H00055743-P01-10ug	Recombinant Human CHFR GST (N-Term) Protein

Limitations

This product is for research use only and is not approved for use in humans or in clinical diagnosis. Primary Antibodies are guaranteed for 1 year from date of receipt.

For more information on our 100% guarantee, please visit www.novusbio.com/guarantee

Earn gift cards/discounts by submitting a review: www.novusbio.com/reviews/submit/NB100-1166

Earn gift cards/discounts by submitting a publication using this product:
www.novusbio.com/publications



