

# Product Datasheet

## SYF2 Antibody NB100-1132

Unit Size: 0.1 mg

Store at -20C. Avoid freeze-thaw cycles.

[www.novusbio.com](http://www.novusbio.com)



[technical@novusbio.com](mailto:technical@novusbio.com)

### Publications: 1

Protocols, Publications, Related Products, Reviews, Research Tools and Images at:  
[www.novusbio.com/NB100-1132](http://www.novusbio.com/NB100-1132)

Updated 9/9/2025 v.20.1

Earn rewards for product  
reviews and publications.

Submit a publication at [www.novusbio.com/publications](http://www.novusbio.com/publications)

Submit a review at [www.novusbio.com/reviews/destination/NB100-1132](http://www.novusbio.com/reviews/destination/NB100-1132)



**NB100-1132****SYF2 Antibody****Product Information**

<b>Unit Size</b>	0.1 mg
<b>Concentration</b>	0.5 mg/ml
<b>Storage</b>	Store at -20C. Avoid freeze-thaw cycles.
<b>Clonality</b>	Polyclonal
<b>Preservative</b>	0.02% Sodium Azide
<b>Isotype</b>	IgG
<b>Purity</b>	Immunogen affinity purified
<b>Buffer</b>	Tris saline (20 mM Tris pH 7.3, 150 mM NaCl), 0.5% BSA

**Product Description**

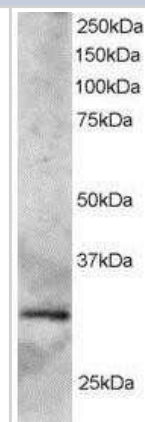
<b>Description</b>	Novus Biologicals Goat SYF2 Antibody (NB100-1132) is a polyclonal antibody validated for use in WB and ELISA. Anti-SYF2 Antibody: Cited in 1 publication. All Novus Biologicals antibodies are covered by our 100% guarantee.
<b>Host</b>	Goat
<b>Gene ID</b>	25949
<b>Gene Symbol</b>	SYF2
<b>Species</b>	Human, Mouse
<b>Specificity/Sensitivity</b>	This antibody is expected to recognise both reported isoforms.
<b>Immunogen</b>	Peptide with sequence C-AEIKQNLERGTA V corresponding to C-Terminus according to NP_997053.1.

**Product Application Details**

<b>Applications</b>	Western Blot, Peptide ELISA
<b>Recommended Dilutions</b>	Western Blot 0.5 - 3 ug/ml, Peptide ELISA Detection limit 1:8000
<b>Application Notes</b>	WB: Approx. 26 kDa band observed in mouse heart lysate and 30 kDa band observed in human heart lysate (predicted MW of 28 kDa band according to NP_056299).

**Images**

Western Blot: SYF2 Antibody [NB100-1132] - (2ug/ml) of Human Heart lysate (RIPA buffer, 35ug total protein per lane). Primary incubated for 1 hour. Detected by western blot using chemiluminescence.

**Publications**

Chang MS, Chang CL, Huang CJ, Yang YC. p29, a novel GCIP-interacting protein, localizes in the nucleus. Biochem Biophys Res Commun 2000-12-20 [PMID: 11118353]





### Novus Biologicals USA

10730 E. Briarwood Avenue  
Centennial, CO 80112  
USA  
Phone: 303.730.1950  
Toll Free: 1.888.506.6887  
Fax: 303.730.1966  
nb-customerservice@bio-techne.com

### Bio-Techne Canada

21 Canmotor Ave  
Toronto, ON M8Z 4E6  
Canada  
Phone: 905.827.6400  
Toll Free: 855.668.8722  
Fax: 905.827.6402  
canada.inquires@bio-techne.com

### Bio-Techne Ltd

19 Barton Lane  
Abingdon Science Park  
Abingdon, OX14 3NB, United Kingdom  
Phone: (44) (0) 1235 529449  
Free Phone: 0800 37 34 15  
Fax: (44) (0) 1235 533420  
info.EMEA@bio-techne.com

### General Contact Information

www.novusbio.com  
Technical Support: nb-technical@bio-techne.com  
Orders: nb-customerservice@bio-techne.com  
General: novus@novusbio.com

### Products Related to NB100-1132

NBL1-16636	SYF2 Overexpression Lysate
HAF017	Rabbit anti-Goat IgG Secondary Antibody [HRP (Horseradish Peroxidase)]
HAF109	Donkey anti-Goat IgG Secondary Antibody [HRP (Horseradish Peroxidase)]
NB410-28088-1mg	Goat IgG Isotype Control

### Limitations

This product is for research use only and is not approved for use in humans or in clinical diagnosis. Primary Antibodies are guaranteed for 1 year from date of receipt.

For more information on our 100% guarantee, please visit [www.novusbio.com/guarantee](http://www.novusbio.com/guarantee)

Earn gift cards/discounts by submitting a review: [www.novusbio.com/reviews/submit/NB100-1132](http://www.novusbio.com/reviews/submit/NB100-1132)

Earn gift cards/discounts by submitting a publication using this product:  
[www.novusbio.com/publications](http://www.novusbio.com/publications)



