

Product Datasheet

GULP1/CED-6 Antibody NB100-1042

Unit Size: 0.1 mg

Store at -20C. Avoid freeze-thaw cycles.

www.novusbio.com



technical@novusbio.com

Publications: 3

Protocols, Publications, Related Products, Reviews, Research Tools and Images at:
www.novusbio.com/NB100-1042

Updated 9/9/2025 v.20.1

Earn rewards for product
reviews and publications.

Submit a publication at www.novusbio.com/publications

Submit a review at www.novusbio.com/reviews/destination/NB100-1042



NB100-1042**GULP1/CED-6 Antibody**

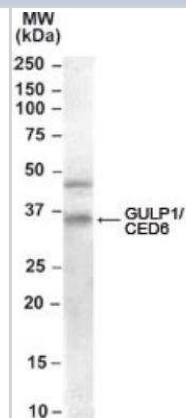
Product Information	
Unit Size	0.1 mg
Concentration	0.5 mg/ml
Storage	Store at -20C. Avoid freeze-thaw cycles.
Clonality	Polyclonal
Preservative	0.02% Sodium Azide
Isotype	IgG
Purity	Immunogen affinity purified
Buffer	Tris saline (20 mM Tris pH 7.3, 150 mM NaCl), 0.5% BSA

Product Description	
Description	Novus Biologicals Goat GULP1/CED-6 Antibody (NB100-1042) is a polyclonal antibody validated for use in IHC, WB and ELISA. Anti-GULP1/CED-6 Antibody: Cited in 3 publications. All Novus Biologicals antibodies are covered by our 100% guarantee.
Host	Goat
Gene ID	51454
Gene Symbol	GULP1
Species	Human
Reactivity Notes	Predicted cross-reactivity based on sequence identity: Mouse, Rat, Canine.
Immunogen	Peptide with sequence EGTVFCLDPLDSRC corresponding to C-Terminus according to NP_057399.1.

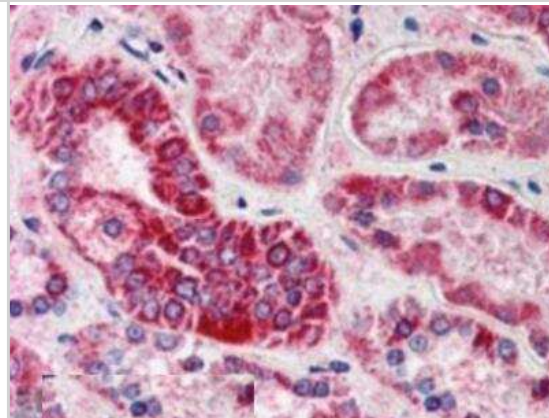
Product Application Details	
Applications	Western Blot, Immunohistochemistry-Paraffin, Immunohistochemistry, Peptide ELISA
Recommended Dilutions	Western Blot 0.2 - 0.6 ug/ml, Immunohistochemistry 5 - 10 ug/ml, Immunohistochemistry-Paraffin 5 - 10 ug/ml, Peptide ELISA Detection limit 1:64000
Application Notes	WB: Approx. 35 kDa band observed in human placenta lysates (calculated MW of 34.5 kDa band according to NP_057399.1). An additional band of unknown identity was also consistently observed at approx.46 kDa. This band was successfully blocked by incubation with the immunizing peptide. IHC-P: Human kidney shows staining of cytoplasm, stronger in a selection of epithelial cells of distal convoluted tubules.

Images

Western Blot: GULP1/CED-6 Antibody [NB100-1042] - Analysis of GULP1 in Human Placenta lysate (RIPA buffer, 30ug total protein per lane) using NB100-1042 at 0.2ug/ml. Primary incubated for 1 hour. Detected using chemiluminescence.



Immunohistochemistry-Paraffin: GULP1/CED-6 Antibody [NB100-1042] - Analysis of GULP1 in paraffin embedded Human Kidney using NB100-1042 at 5ug/ml. Steamed antigen retrieval with citrate buffer pH 6, AP-staining.



Publications

Faralli JA, Desikan H, Peotter J et al. Genomic/proteomic analyses of dexamethasone-treated human trabecular meshwork cells reveal a role for GULP1 and ABR in phagocytosis *Mol. Vis.* 2019-04-25 [PMID: 31516309]

Su HP, Nakada-Tsukui K, Tosello-Trampont AC et al. Interaction of CED-6/GULP, an adapter protein involved in engulfment of apoptotic cells with CED-1 and CD91/low density lipoprotein receptor-related protein (LRP). *J Biol Chem* 2002-04-05 [PMID: 11729193]

Jha A, Watkins SC, Traub LM. The apoptotic engulfment protein Ced-6 participates in clathrin-mediated yolk uptake in *Drosophila* egg chambers. *Mol Biol Cell.* 2012-05-01 [PMID: 22398720]

Details:

Fig 9D (purified rat placenta and brain clathrin-coated vesicles, rat placenta and brain cytosol). GULP was detected at ~35 kDa in placenta cytosol and strongly enriched in clathrin-coated vesicles purified from placenta. GULP was not detected in brain cy



Novus Biologicals USA

10730 E. Briarwood Avenue
Centennial, CO 80112
USA
Phone: 303.730.1950
Toll Free: 1.888.506.6887
Fax: 303.730.1966
nb-customerservice@bio-techne.com

Bio-Techne Canada

21 Canmotor Ave
Toronto, ON M8Z 4E6
Canada
Phone: 905.827.6400
Toll Free: 855.668.8722
Fax: 905.827.6402
canada.inquires@bio-techne.com

Bio-Techne Ltd

19 Barton Lane
Abingdon Science Park
Abingdon, OX14 3NB, United Kingdom
Phone: (44) (0) 1235 529449
Free Phone: 0800 37 34 15
Fax: (44) (0) 1235 533420
info.EMEA@bio-techne.com

General Contact Information

www.novusbio.com
Technical Support: nb-technical@bio-techne.com
Orders: nb-customerservice@bio-techne.com
General: novus@novusbio.com

Products Related to NB100-1042

NBP2-33376H	Blue Marker Antibody (6F4-F6) [HRP]
HAF017	Rabbit anti-Goat IgG Secondary Antibody [HRP (Horseradish Peroxidase)]
HAF109	Donkey anti-Goat IgG Secondary Antibody [HRP (Horseradish Peroxidase)]
NB410-28088-1mg	Goat IgG Isotype Control

Limitations

This product is for research use only and is not approved for use in humans or in clinical diagnosis. Primary Antibodies are guaranteed for 1 year from date of receipt.

For more information on our 100% guarantee, please visit www.novusbio.com/guarantee

Earn gift cards/discounts by submitting a review: www.novusbio.com/reviews/submit/NB100-1042

Earn gift cards/discounts by submitting a publication using this product:
www.novusbio.com/publications



