

Product Datasheet

Lactate Dehydrogenase A/LDHA Antibody (2066A) - Azide and BSA Free MAB9216

Unit Size: 100 ug

Store at -20C in the dark. Avoid freeze-thaw cycles.

www.novusbio.com



technical@novusbio.com

Protocols, Publications, Related Products, Reviews, Research Tools and Images at:
www.novusbio.com/MAB9216

Updated 10/23/2024 v.20.1

Earn rewards for product
reviews and publications.

Submit a publication at www.novusbio.com/publications

Submit a review at www.novusbio.com/reviews/destination/MAB9216



MAB9216

Lactate Dehydrogenase A/LDHA Antibody (2066A) - Azide and BSA Free

Product Information	
Unit Size	100 ug
Concentration	1.0 mg/ml
Storage	Store at -20C in the dark. Avoid freeze-thaw cycles.
Clonality	Monoclonal
Clone	2066A
Preservative	No Preservative
Isotype	IgG
Purity	Protein A or G purified
Buffer	PBS

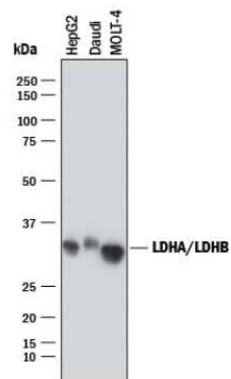
Product Description	
Description	>90% by SDS PAGE
Host	Rabbit
Gene ID	3939
Gene Symbol	LDHA
Species	Human
Immunogen	rhLDH-A aa2-92

Product Application Details	
Applications	Western Blot, Flow Cytometry (Negative), Immunocytochemistry
Recommended Dilutions	Western Blot, Flow Cytometry (Negative), Immunocytochemistry

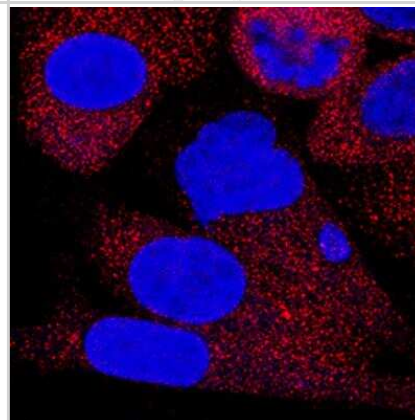


Images

Western Blot: Lactate Dehydrogenase A/LDHA Antibody (2066A) [MAB9216] - Analysis of HepG2, Daudi and MOLT-4 cells lysates with 0.5 ug/ml of hLDHA/LDHB Monoclonal Antibody followed by HRP-conjugated Anti-Rabbit IgG Antibody. A specific band was detected for hLDHA/LDHB at approximately 34-36 kDa (as indicated). This experiment was conducted under reducing conditions and using Immunoblot Buffer Group 1.



Immunocytochemistry: Lactate Dehydrogenase A/LDHA Antibody (2066A) [MAB9216] - Lactate Dehydrogenase A/LDHA was detected in immersion fixed PC3 cell using Lactate Dehydrogenase A/LDHA Monoclonal Antibody at 1 ug/ml dilution. Cells were stained using Donkey anti-Rabbit IgG Secondary Antibody [NL557] (red) and counterstained with DAPI (blue). Specific staining was localized to cytoplasmic.





Novus Biologicals USA

10730 E. Briarwood Avenue
Centennial, CO 80112
USA
Phone: 303.730.1950
Toll Free: 1.888.506.6887
Fax: 303.730.1966
nb-customerservice@bio-techne.com

Bio-Techne Canada

21 Canmotor Ave
Toronto, ON M8Z 4E6
Canada
Phone: 905.827.6400
Toll Free: 855.668.8722
Fax: 905.827.6402
canada.inquires@bio-techne.com

Bio-Techne Ltd

19 Barton Lane
Abingdon Science Park
Abingdon, OX14 3NB, United Kingdom
Phone: (44) (0) 1235 529449
Free Phone: 0800 37 34 15
Fax: (44) (0) 1235 533420
info.EMEA@bio-techne.com

General Contact Information

www.novusbio.com
Technical Support: nb-technical@bio-techne.com
Orders: nb-customerservice@bio-techne.com
General: novus@novusbio.com

Products Related to MAB9216

HAF008	Goat anti-Rabbit IgG Secondary Antibody [HRP]
NB7160	Goat anti-Rabbit IgG (H+L) Secondary Antibody [HRP]
NBP2-24891	Rabbit IgG Isotype Control
NBP1-48336PEP	Lactate Dehydrogenase A/LDHA Antibody Blocking Peptide

Limitations

This product is for research use only and is not approved for use in humans or in clinical diagnosis. Primary Antibodies are guaranteed for 1 year from date of receipt.

For more information on our 100% guarantee, please visit www.novusbio.com/guarantee

Earn gift cards/discounts by submitting a review: www.novusbio.com/reviews/submit/MAB9216

Earn gift cards/discounts by submitting a publication using this product:
www.novusbio.com/publications

