

# Product Datasheet

## Cyclin B1 Antibody (2061A) [FITC] MAB6000F

Unit Size: 100 ul

Store at 4C in the dark.

[www.novusbio.com](http://www.novusbio.com)



[technical@novusbio.com](mailto:technical@novusbio.com)

Protocols, Publications, Related Products, Reviews, Research Tools and Images at:  
[www.novusbio.com/MAB6000F](http://www.novusbio.com/MAB6000F)

Updated 10/23/2024 v.20.1

Earn rewards for product  
reviews and publications.

Submit a publication at [www.novusbio.com/publications](http://www.novusbio.com/publications)

Submit a review at [www.novusbio.com/reviews/destination/MAB6000F](http://www.novusbio.com/reviews/destination/MAB6000F)



**MAB6000F****Cyclin B1 Antibody (2061A) [FITC]**

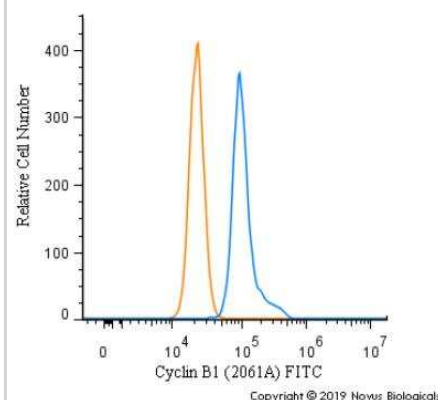
Product Information	
Unit Size	100 ul
Concentration	Please see the vial label for concentration. If unlisted please contact technical services.
Storage	Store at 4C in the dark.
Clonality	Monoclonal
Clone	2061A
Preservative	0.05% Sodium Azide
Isotype	IgG
Conjugate	FITC
Purity	Protein A or G purified
Buffer	PBS

Product Description	
Description	>90% by SDS PAGE
Host	Rabbit
Gene ID	891
Gene Symbol	CCNB1
Species	Human
Immunogen	Partial recombinant human Cyclin-B1 protein (amino acids 1-91) [UniProt P14635]

Product Application Details	
Applications	Flow Cytometry, Immunohistochemistry
Recommended Dilutions	Flow Cytometry, Immunohistochemistry
Application Notes	Optimal dilution of this antibody should be experimentally determined.

**Images**

Flow Cytometry: Cyclin B1 Antibody (2061A) [FITC] [MAB6000F] - An intracellular stain was performed on HeLa cells with Cyclin B1 Antibody [2061A] MAB6000F (blue) and a matched isotype control (orange). Cells were fixed with 4% PFA and then permeabilized with 0.1% saponin. Cells were incubated in an antibody dilution of 10 ug/mL for 30 minutes at room temperature. Both antibodies were conjugated to FITC.



**Novus Biologicals USA**

10730 E. Briarwood Avenue  
Centennial, CO 80112  
USA  
Phone: 303.730.1950  
Toll Free: 1.888.506.6887  
Fax: 303.730.1966  
nb-customerservice@bio-techne.com

**Bio-Techne Canada**

21 Canmotor Ave  
Toronto, ON M8Z 4E6  
Canada  
Phone: 905.827.6400  
Toll Free: 855.668.8722  
Fax: 905.827.6402  
canada.inquires@bio-techne.com

**Bio-Techne Ltd**

19 Barton Lane  
Abingdon Science Park  
Abingdon, OX14 3NB, United Kingdom  
Phone: (44) (0) 1235 529449  
Free Phone: 0800 37 34 15  
Fax: (44) (0) 1235 533420  
info.EMEA@bio-techne.com

**General Contact Information**

[www.novusbio.com](http://www.novusbio.com)  
Technical Support: nb-technical@bio-techne.com  
Orders: nb-customerservice@bio-techne.com  
General: novus@novusbio.com

**Products Related to MAB6000F**

---

NBP2-24892	Rabbit IgG Isotype Control [FITC]
NBP1-98919-20ug	Recombinant Human Cyclin B1 His Protein
NBP2-75099	Human Cyclin B1 ELISA Kit (Colorimetric)
AF835	Caspase-3 Antibody [Unconjugated] - Active

---

**Limitations**

This product is for research use only and is not approved for use in humans or in clinical diagnosis. Primary Antibodies are guaranteed for 1 year from date of receipt.

For more information on our 100% guarantee, please visit [www.novusbio.com/guarantee](http://www.novusbio.com/guarantee)

Earn gift cards/discounts by submitting a review: [www.novusbio.com/reviews/submit/MAB6000F](http://www.novusbio.com/reviews/submit/MAB6000F)

Earn gift cards/discounts by submitting a publication using this product:  
[www.novusbio.com/publications](http://www.novusbio.com/publications)

