

Product Datasheet

Cyclin B1 Antibody (2061A) - Azide and BSA Free MAB6000

Unit Size: 100 ug

Store at -20C. Avoid freeze-thaw cycles.

www.novusbio.com



technical@novusbio.com

Publications: 1

Protocols, Publications, Related Products, Reviews, Research Tools and Images at:
www.novusbio.com/MAB6000

Updated 10/23/2024 v.20.1

Earn rewards for product
reviews and publications.

Submit a publication at www.novusbio.com/publications

Submit a review at www.novusbio.com/reviews/destination/MAB6000



MAB6000

Cyclin B1 Antibody (2061A) - Azide and BSA Free

Product Information	
Unit Size	100 ug
Concentration	1.0 mg/ml
Storage	Store at -20C. Avoid freeze-thaw cycles.
Clonality	Monoclonal
Clone	2061A
Preservative	No Preservative
Isotype	IgG
Purity	Protein A or G purified
Buffer	PBS

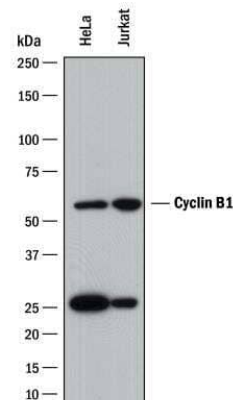
Product Description	
Description	>90% by SDS PAGE
Host	Rabbit
Gene ID	891
Gene Symbol	CCNB1
Species	Human
Immunogen	Partial recombinant human Cyclin-B1 protein (amino acids 1-91) [UniProt P14635]

Product Application Details	
Applications	Western Blot, Flow Cytometry, Immunohistochemistry, CyTOF-ready, ICC/IF (Negative)
Recommended Dilutions	Western Blot 0.05 - 0.1 ug/ml, Flow Cytometry, Immunohistochemistry, ICC/IF (Negative), CyTOF-ready
Application Notes	This antibody is Cytof ready.

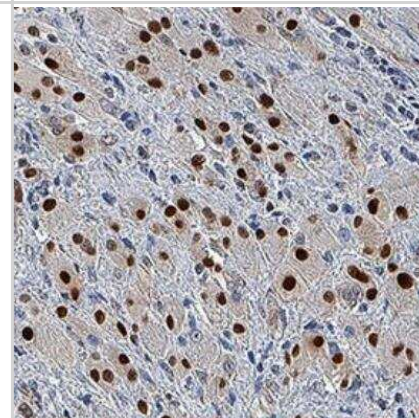


Images

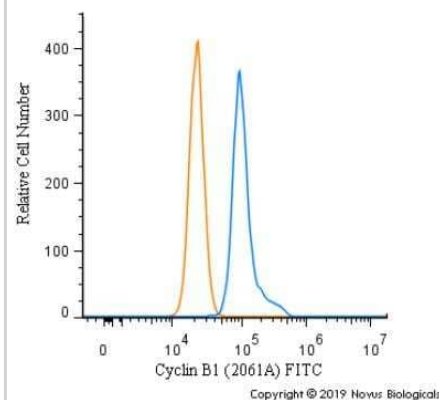
Western Blot: Cyclin B1 Antibody (2061A) - Azide Free [MAB6000] - Western blot detection of Cyclin B1 (clone 2061A) catalog number MAB6000 at 0.05 ug/ml in HeLa and Jurkat cell lysates.



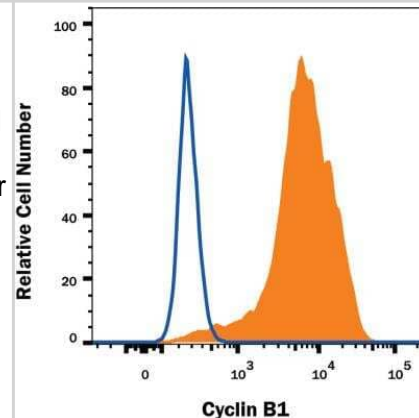
Immunohistochemistry: Cyclin B1 Antibody (2061A) - Azide Free [MAB6000] - Cyclin B1 was detected in immersion fixed paraffin-embedded sections of human squamous cell carcinoma using Cyclin B1 Monoclonal Antibody at 3 ug/ml. Tissue was stained using Rabbit IgG VisUCyte HRP Polymer Antibody (brown) and counterstained with hematoxylin (blue). Specific staining was localized to nuclei in cancer cells.



Flow Cytometry: Cyclin B1 Antibody (2061A) - Azide Free [MAB6000] - An intracellular stain was performed on HeLa cells with Cyclin B1 Antibody [2061A] MAB6000F (blue) and a matched isotype control (orange). Cells were fixed with 4% PFA and then permeabilized with 0.1% saponin. Cells were incubated in an antibody dilution of 10 ug/mL for 30 minutes at room temperature. Both antibodies were conjugated to FITC.



Flow Cytometry: Cyclin B1 Antibody (2061A) - Azide Free [MAB6000] - K562 human cell line was stained with Rabbit Anti-Human Cyclin B1 Monoclonal Antibody (Catalog # MAB6000, filled histogram) or isotype control antibody (open histogram), followed by Phycoerythrin-conjugated Anti-Rabbit IgG Secondary Antibody (Catalog # F0110). To facilitate intracellular staining, cells were fixed with Flow Cytometry Fixation Buffer (Catalog # FC004) and permeabilized with Flow Cytometry Permeabilization/Wash Buffer I (Catalog # FC005).



Publications

Valdez BC, Li Y, Murray D et al. Comparison of the cytotoxicity of cladribine and clofarabine when combined with fludarabine and busulfan in AML cells: Enhancement of cytotoxicity with epigenetic modulators. *Exp Hematol* 2015 Jun [PMID: 25704054]



Novus Biologicals USA

10730 E. Briarwood Avenue
Centennial, CO 80112
USA
Phone: 303.730.1950
Toll Free: 1.888.506.6887
Fax: 303.730.1966
nb-customerservice@bio-techne.com

Bio-Techne Canada

21 Canmotor Ave
Toronto, ON M8Z 4E6
Canada
Phone: 905.827.6400
Toll Free: 855.668.8722
Fax: 905.827.6402
canada.inquires@bio-techne.com

Bio-Techne Ltd

19 Barton Lane
Abingdon Science Park
Abingdon, OX14 3NB, United Kingdom
Phone: (44) (0) 1235 529449
Free Phone: 0800 37 34 15
Fax: (44) (0) 1235 533420
info.EMEA@bio-techne.com

General Contact Information

www.novusbio.com
Technical Support: nb-technical@bio-techne.com
Orders: nb-customerservice@bio-techne.com
General: novus@novusbio.com

Products Related to MAB6000

HAF008	Goat anti-Rabbit IgG Secondary Antibody [HRP]
NB7160	Goat anti-Rabbit IgG (H+L) Secondary Antibody [HRP]
NBP2-24891	Rabbit IgG Isotype Control
NBP1-98919-20ug	Recombinant Human Cyclin B1 His Protein

Limitations

This product is for research use only and is not approved for use in humans or in clinical diagnosis. Primary Antibodies are guaranteed for 1 year from date of receipt.

For more information on our 100% guarantee, please visit www.novusbio.com/guarantee

Earn gift cards/discounts by submitting a review: www.novusbio.com/reviews/submit/MAB6000

Earn gift cards/discounts by submitting a publication using this product:
www.novusbio.com/publications

