

# Product Datasheet

## Mouse CD31/PECAM-1 ELISA Kit (Colorimetric) KA1509

Unit Size: 1 Kit

Store at 4C short term. Aliquot and store at -20C long term. Avoid freeze-thaw cycles.

[www.novusbio.com](http://www.novusbio.com)



[technical@novusbio.com](mailto:technical@novusbio.com)

Protocols, Publications, Related Products, Reviews, Research Tools and Images at:  
[www.novusbio.com/KA1509](http://www.novusbio.com/KA1509)

Updated 10/23/2024 v.20.1

Earn rewards for product  
reviews and publications.

Submit a publication at [www.novusbio.com/publications](http://www.novusbio.com/publications)

Submit a review at [www.novusbio.com/reviews/destination/KA1509](http://www.novusbio.com/reviews/destination/KA1509)



**KA1509****Mouse CD31/PECAM-1 ELISA Kit (Colorimetric)**

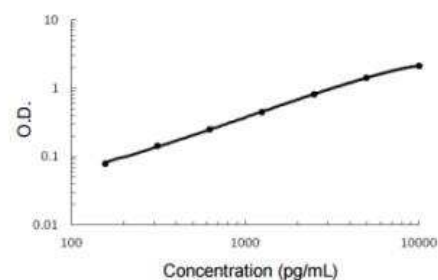
<b>Product Information</b>	
<b>Unit Size</b>	1 Kit
<b>Concentration</b>	Concentration is not relevant for this product. Please see the protocols for proper use of this product.
<b>Storage</b>	Store at 4C short term. Aliquot and store at -20C long term. Avoid freeze-thaw cycles.

<b>Product Description</b>	
<b>Description</b>	Pecam1 (Mouse) ELISA Kit is a sandwich enzyme immunoassay for the quantitative measurement of mouse Pecam1.
<b>Gene ID</b>	5175
<b>Gene Symbol</b>	PECAM1
<b>Species</b>	Mouse
<b>Notes</b>	This product is produced by and distributed for Abnova, a company based in Taiwan.
<b>Standard Curve Range</b>	156 to 10000 pg/mL
<b>Sensitivity</b>	<10 pg/mL
<b>Assay Type</b>	Sandwich ELISA
<b>Suitable Sample Type</b>	Cell Culture Supernatant, Plasma (EDTA, Heparin), Serum
<b>Sample Volume</b>	100 uL

<b>Product Application Details</b>	
<b>Applications</b>	ELISA, Quantification
<b>Recommended Dilutions</b>	ELISA, Quantification

**Images**

ELISA: CD31/PECAM-1 ELISA Kit [HRP] [KA1509] - This standard curve was generated for demonstration purpose only. A standard curve must be run with each assay.





### **Novus Biologicals USA**

10730 E. Briarwood Avenue  
Centennial, CO 80112  
USA  
Phone: 303.730.1950  
Toll Free: 1.888.506.6887  
Fax: 303.730.1966  
nb-customerservice@bio-techne.com

### **Bio-Techne Canada**

21 Canmotor Ave  
Toronto, ON M8Z 4E6  
Canada  
Phone: 905.827.6400  
Toll Free: 855.668.8722  
Fax: 905.827.6402  
canada.inquires@bio-techne.com

### **Bio-Techne Ltd**

19 Barton Lane  
Abingdon Science Park  
Abingdon, OX14 3NB, United Kingdom  
Phone: (44) (0) 1235 529449  
Free Phone: 0800 37 34 15  
Fax: (44) (0) 1235 533420  
info.EMEA@bio-techne.com

### **General Contact Information**

www.novusbio.com  
Technical Support: nb-technical@bio-techne.com  
Orders: nb-customerservice@bio-techne.com  
General: novus@novusbio.com

### **Products Related to KA1509**

---

NBP2-54655PEP	CD31/PECAM-1 Recombinant Protein Antigen
210-TA-005	TNF-alpha [Unconjugated]
AF3628	CD31/PECAM-1 Antibody [Unconjugated]
DVE00	VEGF [HRP]

---

### **Limitations**

This product is for research use only and is not approved for use in humans or in clinical diagnosis. ELISA Kits are guaranteed for 6 months from date of receipt.

For more information on our 100% guarantee, please visit [www.novusbio.com/guarantee](http://www.novusbio.com/guarantee)

Earn gift cards/discounts by submitting a review: [www.novusbio.com/reviews/submit/KA1509](http://www.novusbio.com/reviews/submit/KA1509)

Earn gift cards/discounts by submitting a publication using this product:  
[www.novusbio.com/publications](http://www.novusbio.com/publications)

